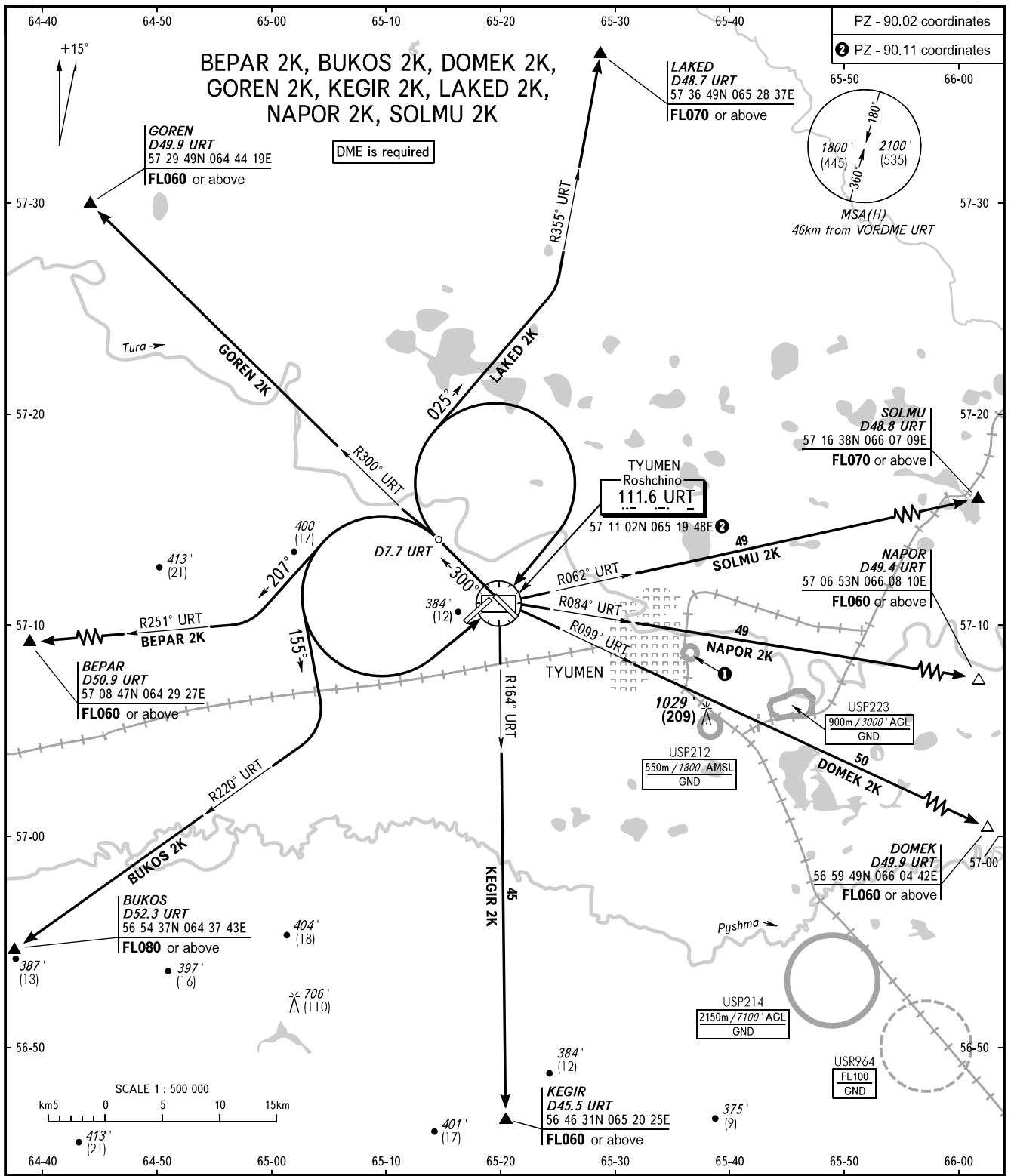


STANDARD DEPARTURE CHART  
INSTRUMENT (SID) - ICAO

TRANSITION  
ALTITUDE: 3000'

TYUMEN, RUSSIA  
ROSHCHINO  
RWY 30



START 118.200  
RADAR 126.100

**WARNING**  
The minimum climb gradients (required due to the airspace structure only) are as follows:  
- 3.7% up to FL070 for SID LAKED 2K;  
- 3.6% up to FL060 for SID GOREN 2K.

BEARINGS AND TRACKS ARE MAGNETIC  
ALTITUDES IN FEET  
HEIGHTS IN METRES  
ELEVATION IN FEET AND METRES  
DISTANCES IN KILOMETRES

Alt set: -QNH(QFE on req);  
-hPa(mm on req).

USP211  
550m / 1800' AMSL  
GND