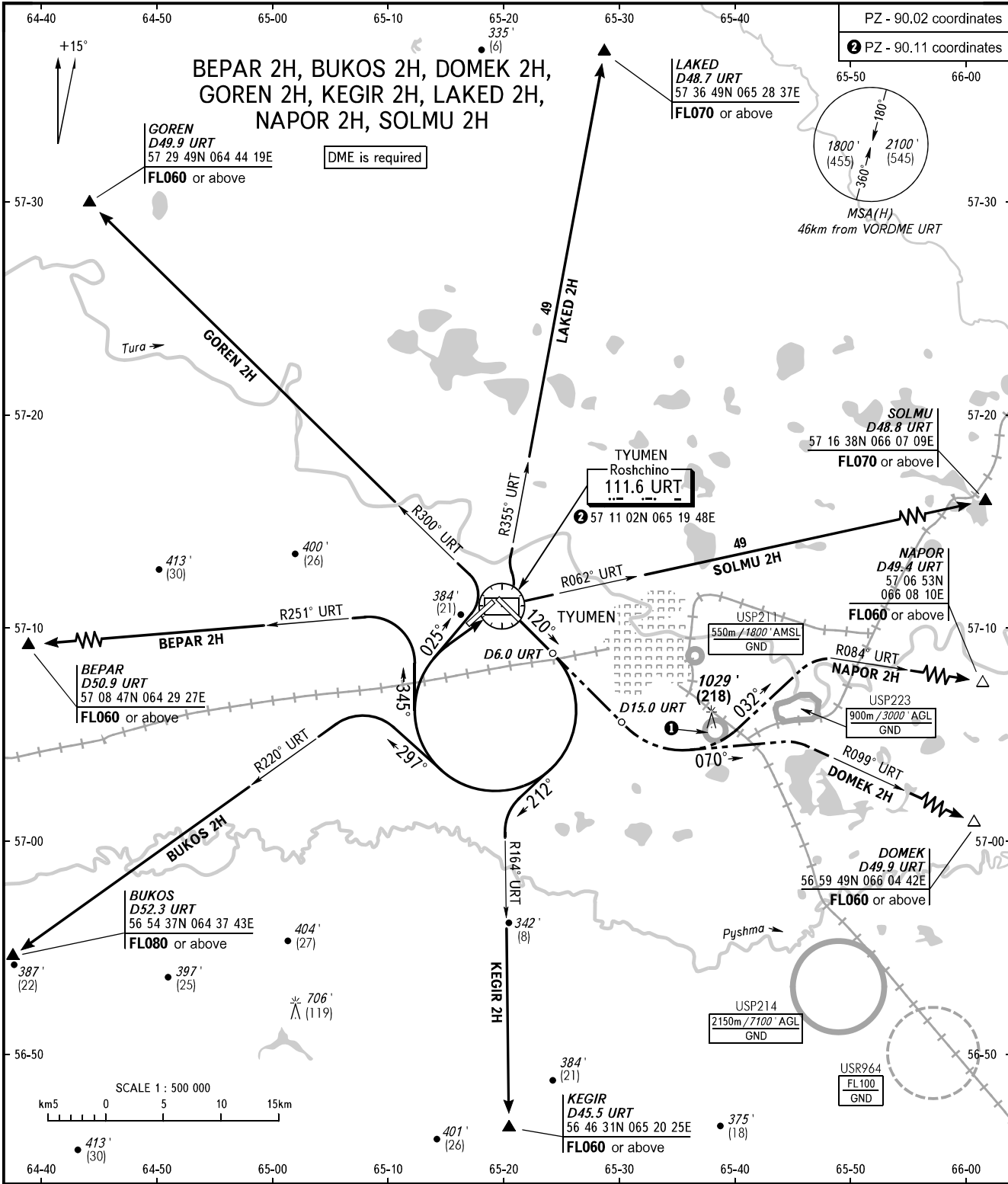


STANDARD DEPARTURE CHART  
INSTRUMENT (SID) - ICAO

TRANSITION  
ALTITUDE: 3000'

TYUMEN, RUSSIA  
ROSHCHINO  
RWY 12



START 118.200  
RADAR 126.100

**1** USP212  
550m / 1800' AMSL  
GND

**WARNING**  
The minimum climb gradients (required due to the airspace structure only) are as follows:  
- 4.0% up to FL060 for SID NAPOR 2H;  
- 3.5% up to FL060 for SID DOMEK 2H.

BEARINGS AND TRACKS ARE MAGNETIC  
ALTITUDES IN FEET  
HEIGHTS IN METRES  
ELEVATION IN FEET AND METRES  
DISTANCES IN KILOMETRES

Alt set: -QNH(QFE on req);  
-hPa(mm on req).

CHANGE: Heading