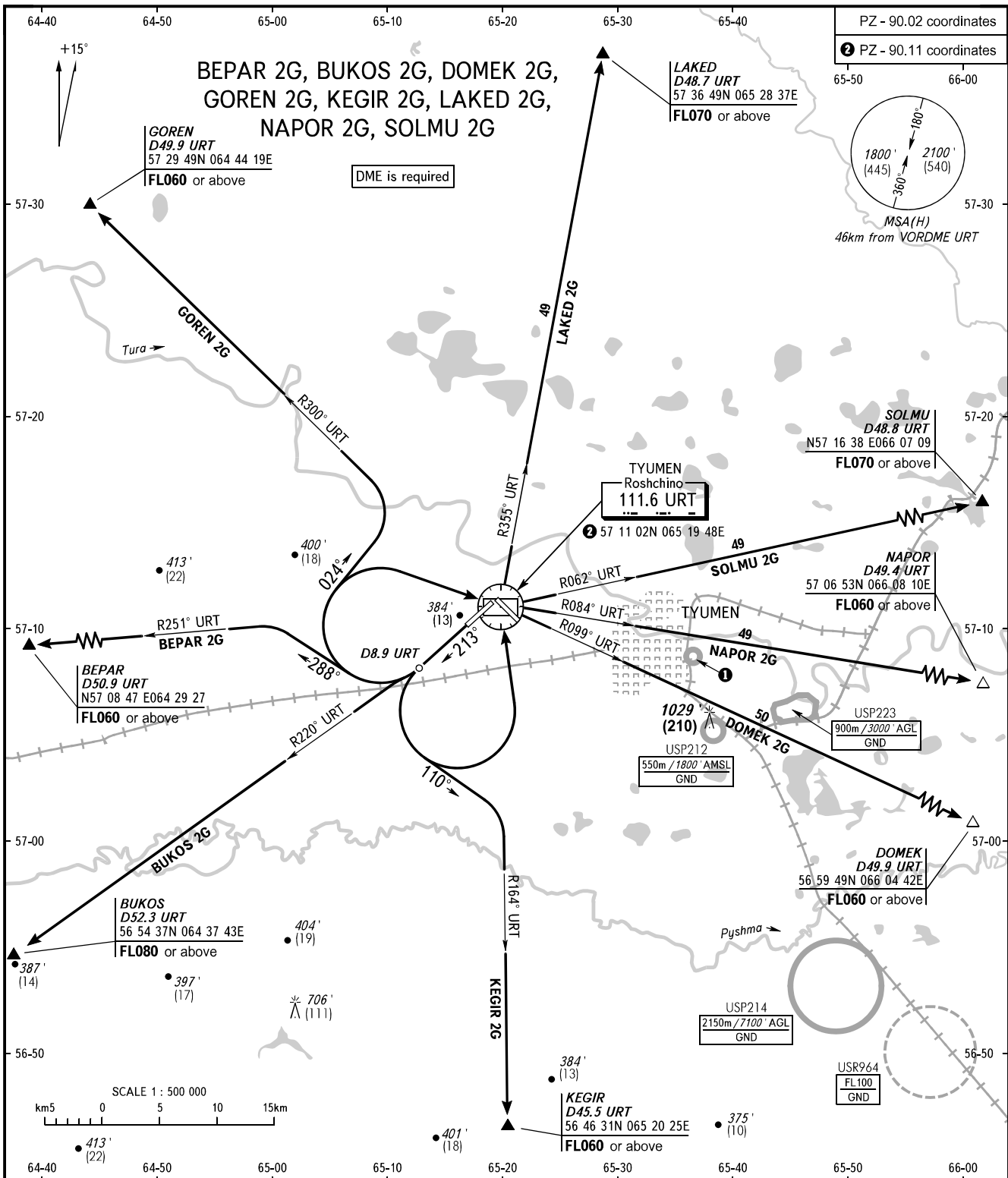


STANDARD DEPARTURE CHART
INSTRUMENT (SID) - ICAO

TRANSITION
ALTITUDE : 3000'

TYUMEN, RUSSIA
ROSHCHINO
RWY 21



START	118.200
RADAR	126.100
BEARINGS AND TRACKS ARE MAGNETIC	Alt set: -QNH(QFE on req);
ALTITUDES IN FEET	-hPa(mm on req).
HEIGHTS IN METRES	
ELEVATION IN FEET AND METRES	
DISTANCES IN KILOMETRES	

① USP211
550m / 1800' AMSL
GND