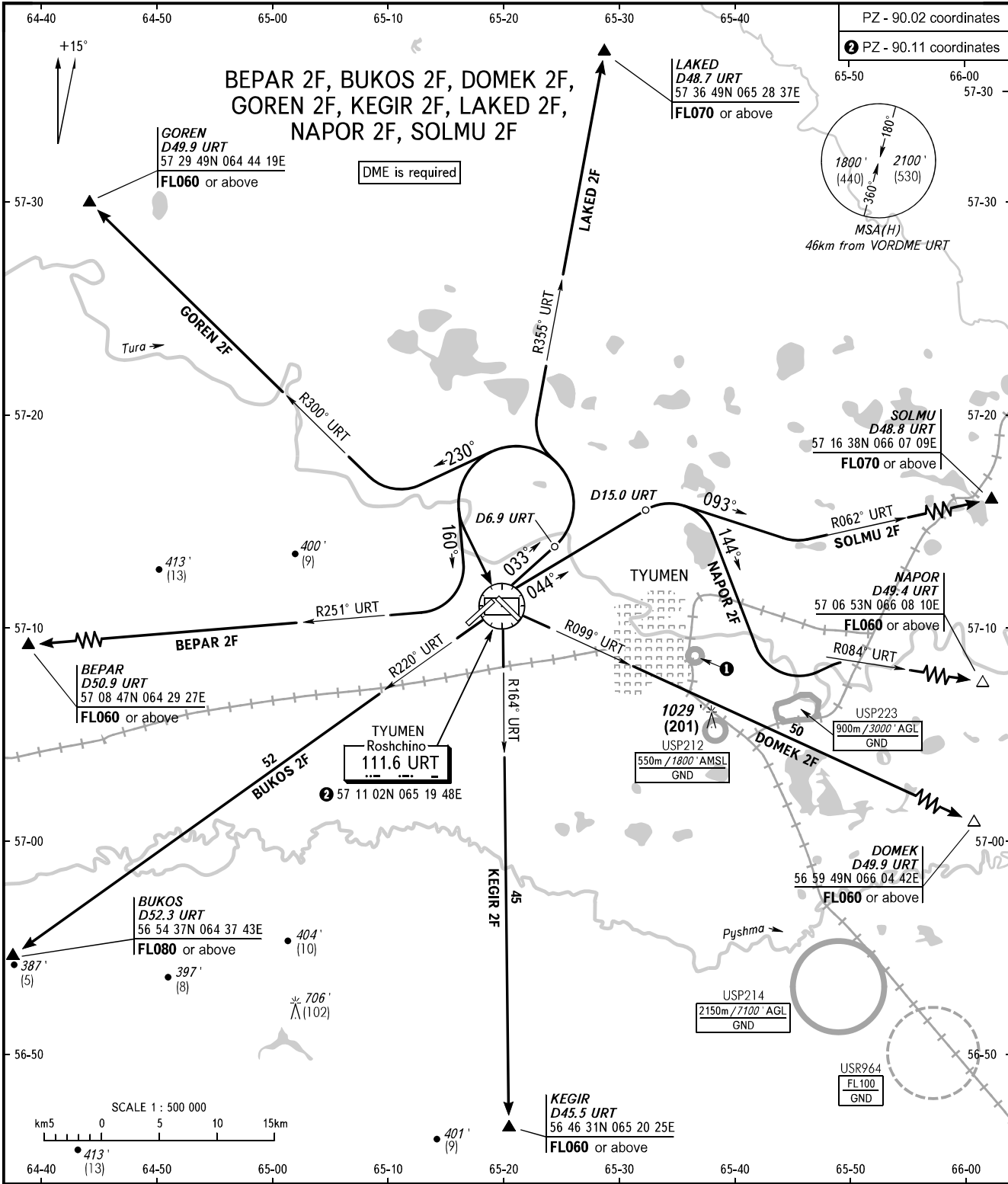


STANDARD DEPARTURE CHART
INSTRUMENT (SID) - ICAO

TRANSITION
ALTITUDE : 3000'

TYUMEN, RUSSIA
ROSHCHINO
RWY 03



START **118.200**
RADAR **126.100**

1 USP211
550m / 1800' AMSL
GND

WARNING
The minimum climb gradients (required due to the airspace structure only) are as follows:
- 4.0% up to FL070 for SID SOLMU 2F;
- 4.1% up to FL070 for SID LAKED 2F.

BEARINGS AND TRACKS ARE MAGNETIC
ALTITUDES IN FEET
HEIGHTS IN METRES
ELEVATION IN FEET AND METRES
DISTANCES IN KILOMETRES

Alt set: -QNH(QFE on req);
-hPa(mm on req).

CHANGE: Heading