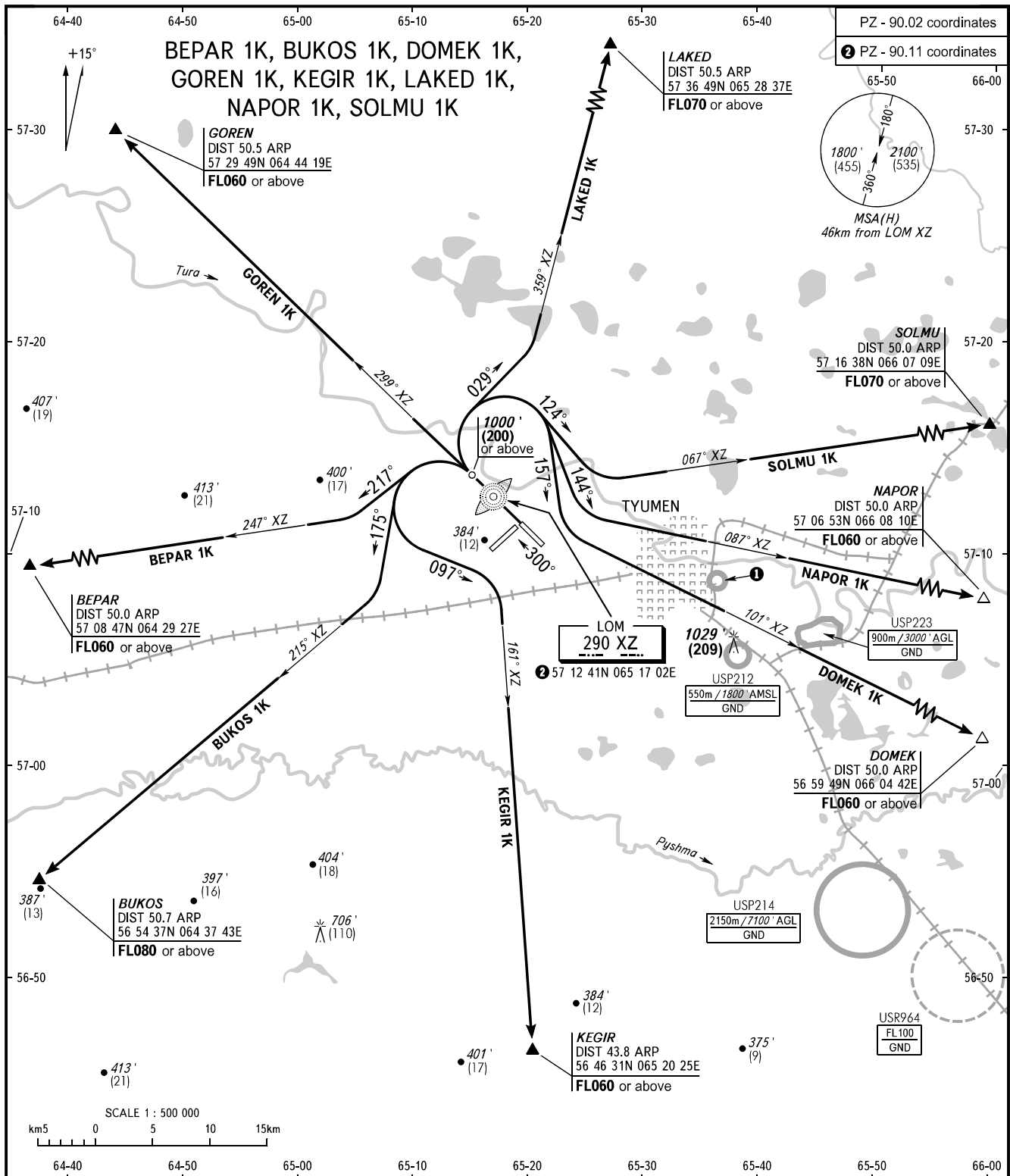


STANDARD DEPARTURE CHART
INSTRUMENT (SID) - ICAO

TRANSITION
ALTITUDE : 3000'

TYUMEN, RUSSIA
ROSHCHINO
RWY 30



START RADAR	118.200 126.100	<div style="border: 1px solid black; padding: 2px;"> <p>1 USP211 550m / 1800' AMSL GND</p> </div>	<p>WARNING:</p> <ol style="list-style-type: none"> Turn before passing DER is PROHIBITED. The minimum climb gradients (required due to the airspace structure only) are as follows: <ul style="list-style-type: none"> - 3.9% up to FL070 for SID LAKED 1K; - 3.7% up to FL080 for SID BUKOS 1K; - 3.6% up to FL060 for SID GOREN 1K. 										
<table border="1"> <tr> <td>BEARINGS AND TRACKS ARE MAGNETIC</td> <td>Alt set: -QNH(QFE on req);</td> </tr> <tr> <td>ALTITUDES IN FEET</td> <td>-hPa(mm on req).</td> </tr> <tr> <td>HEIGHTS IN METRES</td> <td></td> </tr> <tr> <td>ELEVATION IN FEET AND METRES</td> <td></td> </tr> <tr> <td>DISTANCES IN KILOMETRES</td> <td></td> </tr> </table>				BEARINGS AND TRACKS ARE MAGNETIC	Alt set: -QNH(QFE on req);	ALTITUDES IN FEET	-hPa(mm on req).	HEIGHTS IN METRES		ELEVATION IN FEET AND METRES		DISTANCES IN KILOMETRES	
BEARINGS AND TRACKS ARE MAGNETIC	Alt set: -QNH(QFE on req);												
ALTITUDES IN FEET	-hPa(mm on req).												
HEIGHTS IN METRES													
ELEVATION IN FEET AND METRES													
DISTANCES IN KILOMETRES													

CHANGE: NAPOR 1K, SOLMU 1K