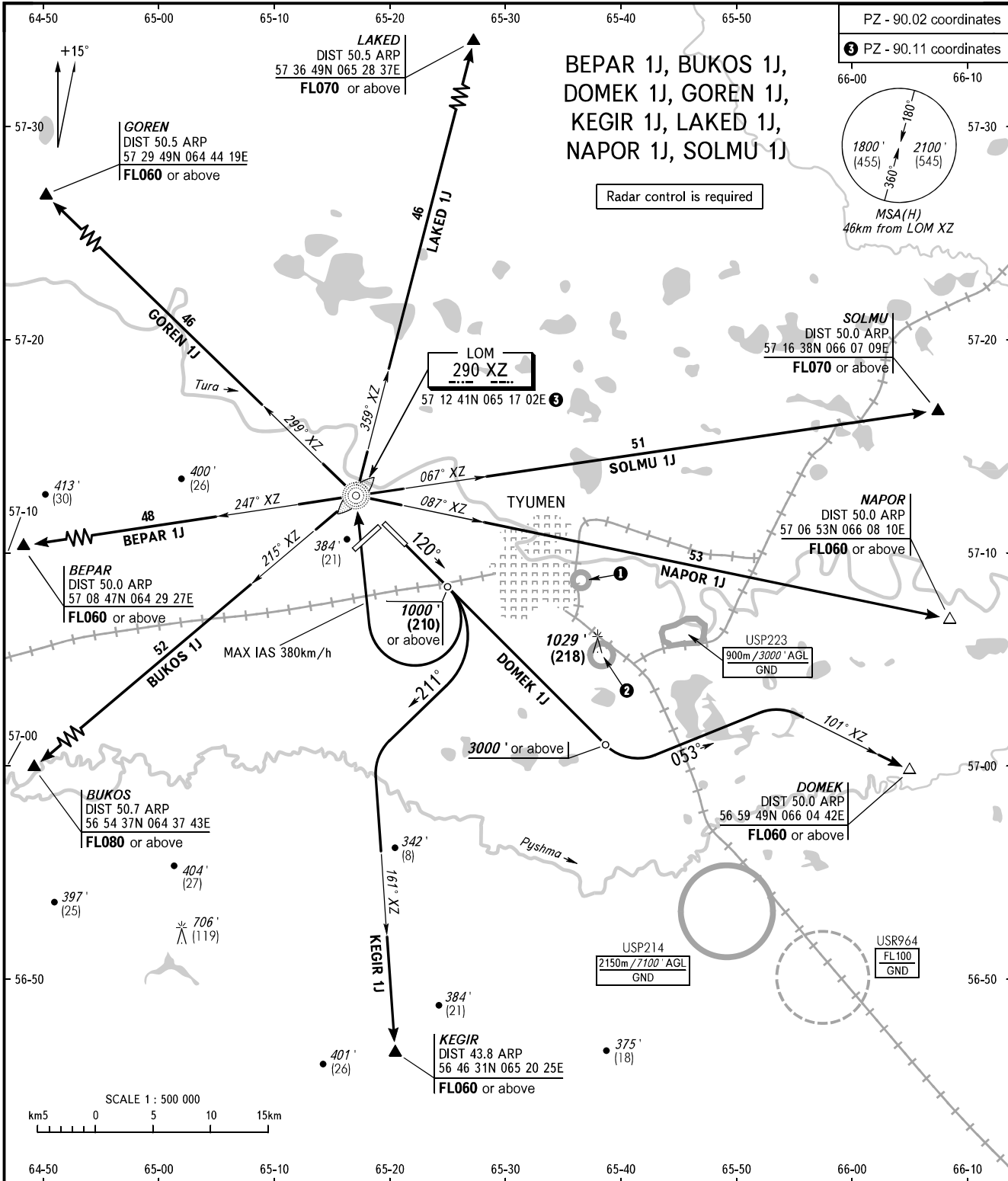


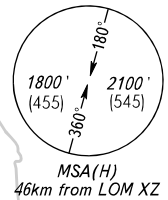
STANDARD DEPARTURE CHART
INSTRUMENT (SID) - ICAO

TRANSITION
ALTITUDE : 3000'

TYUMEN, RUSSIA
ROSHCHINO
RWY 12



PZ - 90.02 coordinates
PZ - 90.11 coordinates



START 118.200
RADAR 126.100

WARNING
Turn before passing DER is PROHIBITED.

1 USP211
550m / 1800' AMSL
GND

2 USP212
550m / 1800' AMSL
GND

CHANGE: NIL

BEARINGS AND TRACKS ARE MAGNETIC ALTITUDES IN FEET HEIGHTS IN METRES ELEVATION IN FEET AND METRES DISTANCES IN KILOMETRES	Alt set: -QNH(QFE on req); -hPa(mm on req).
---	--