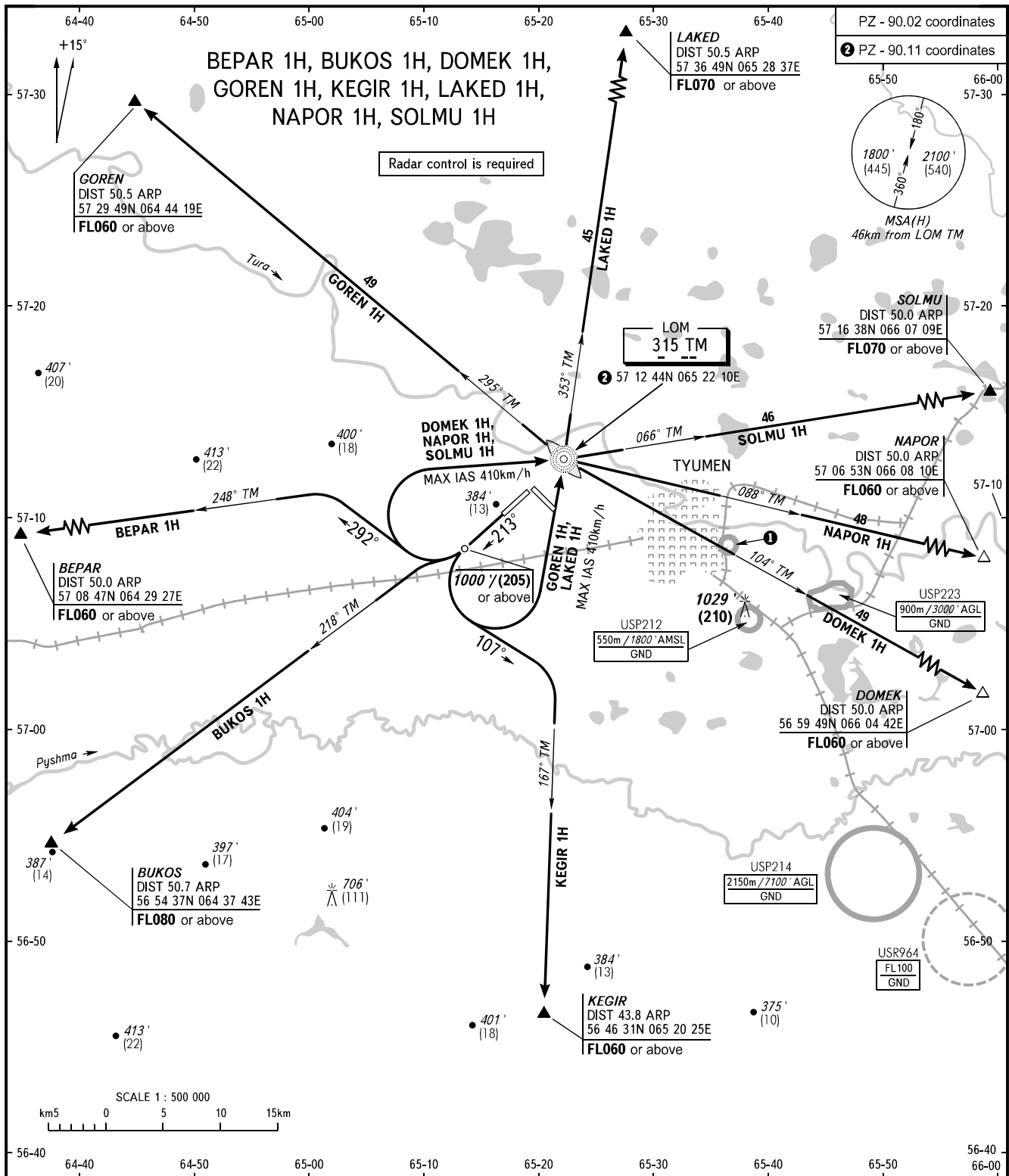


STANDARD DEPARTURE CHART  
INSTRUMENT (SID) - ICAO

TRANSITION  
ALTITUDE : 3000'

TYUMEN, RUSSIA  
ROSHCHINO  
RWY 21



START 118.200  
RADAR 126.100

① USP211  
550m / 1800' AMSL  
GND

- WARNING:**
1. Turn before passing DER is PROHIBITED.
  2. There are close-in obstacles with MAX ELEV 450'.
  3. The minimum climb gradients (required due to the airspace structure only) are as follows:
    - 3.4% up to FL060 for SID KEGIR 1H;
    - 4.5% up to FL080 for SID BEPAR 1H;
    - 4.8% up to FL080 for SID BUKOS 1H.

BEARINGS AND TRACKS ARE MAGNETIC ALTITUDES IN FEET HEIGHTS IN METRES ELEVATION IN FEET AND METRES DISTANCES IN KILOMETRES	Alt set: -QNH(QFE on req); -hPa(mm on req).
---	--

CHANGE: NAPOR 1H