

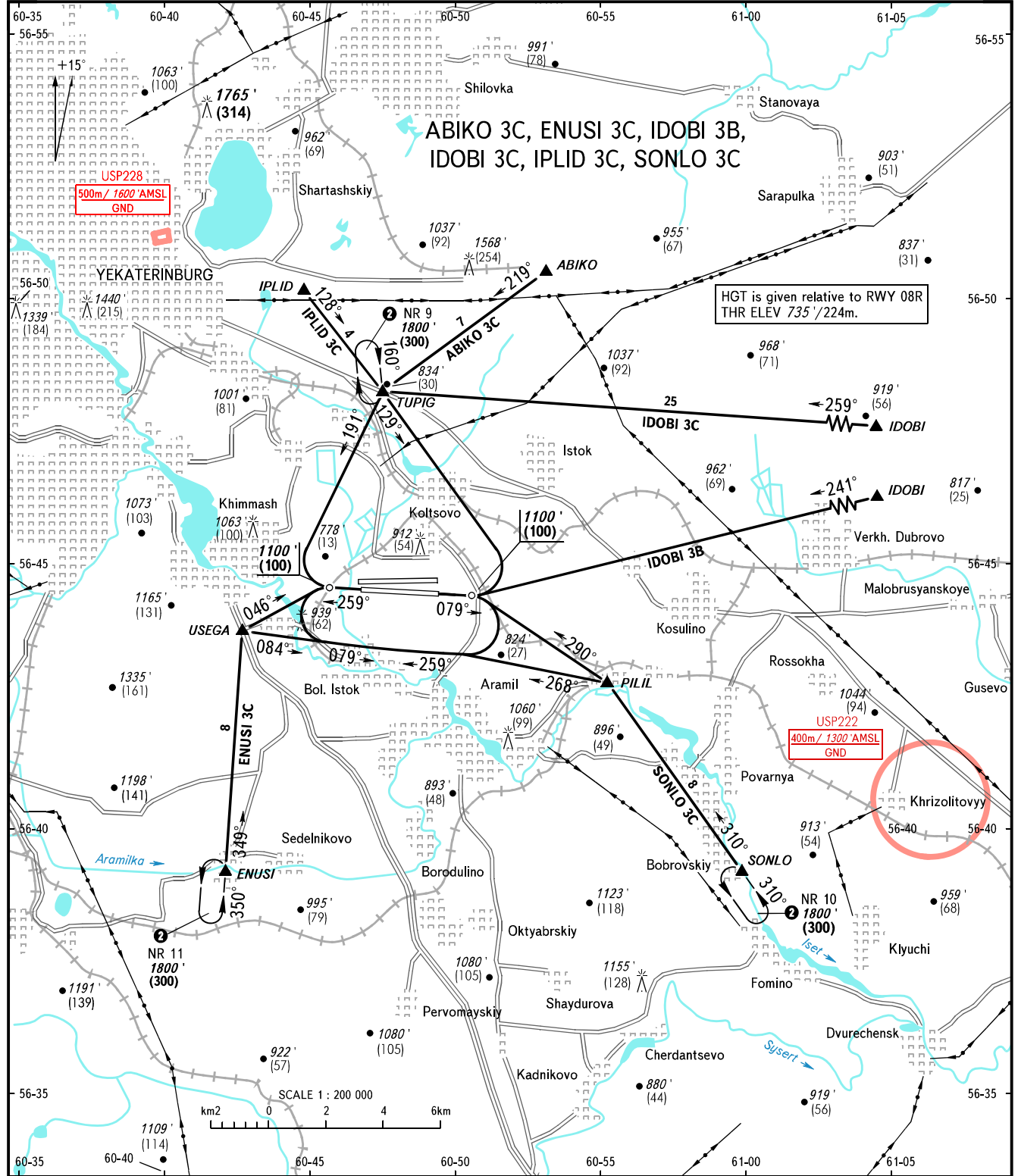
VFR
ARRIVAL
CHART

YEKATERINBURG, RUSSIA

KOLTSOVO

RWY 08R/26L

TRANSITION
LEVEL : ①



HGT is given relative to RWY 08R
THR ELEV 735' / 224m.

USP222
400m / 1300' AMSL
GND

KOLTSOVO RADAR 118.700
KOLTSOVO START 124.300

① TRANSITION LEVEL:

- FL050 when QNH is 1013 hPa (760mm mercury column) or above;
- FL060 when QNH is 977 hPa (733mm mercury column) or above, but less than 1013 hPa (760mm mercury column);
- FL070 when QNH is less than 977 hPa (733mm mercury column).

BEARINGS AND TRACKS ARE MAGNETIC
ALTITUDES AND ELEVATION IN FEET
HEIGHTS IN METRES
DISTANCES IN KILOMETRES

Alt set: -QNH(QFE on req);
-hPa(mm on req).

WARNING:

1. Arrival route is assigned by ATS unit.
 2. Arrival route IDOBI 3B is AVBL by coordination with ATS unit.
 3. Missed approach for the repeated approach:
 - when RWY 08R is active: Climb to 1100'/(100), turn LEFT to CRP TUPIG (holding area NR 9) climbing to 1800'/(300) on track 309°, then according to approach chart;
 - when RWY 26L is active: Climb to 1100'/(100), turn RIGHT to CRP TUPIG (holding area NR 9) climbing to 1800'/(300) on track 011°, then according to approach chart.
- ② Exit from holding areas NR 9, 10, 11 is cleared and provided via the assigned tracks (by vectoring) by Koltsovo-Radar controller.