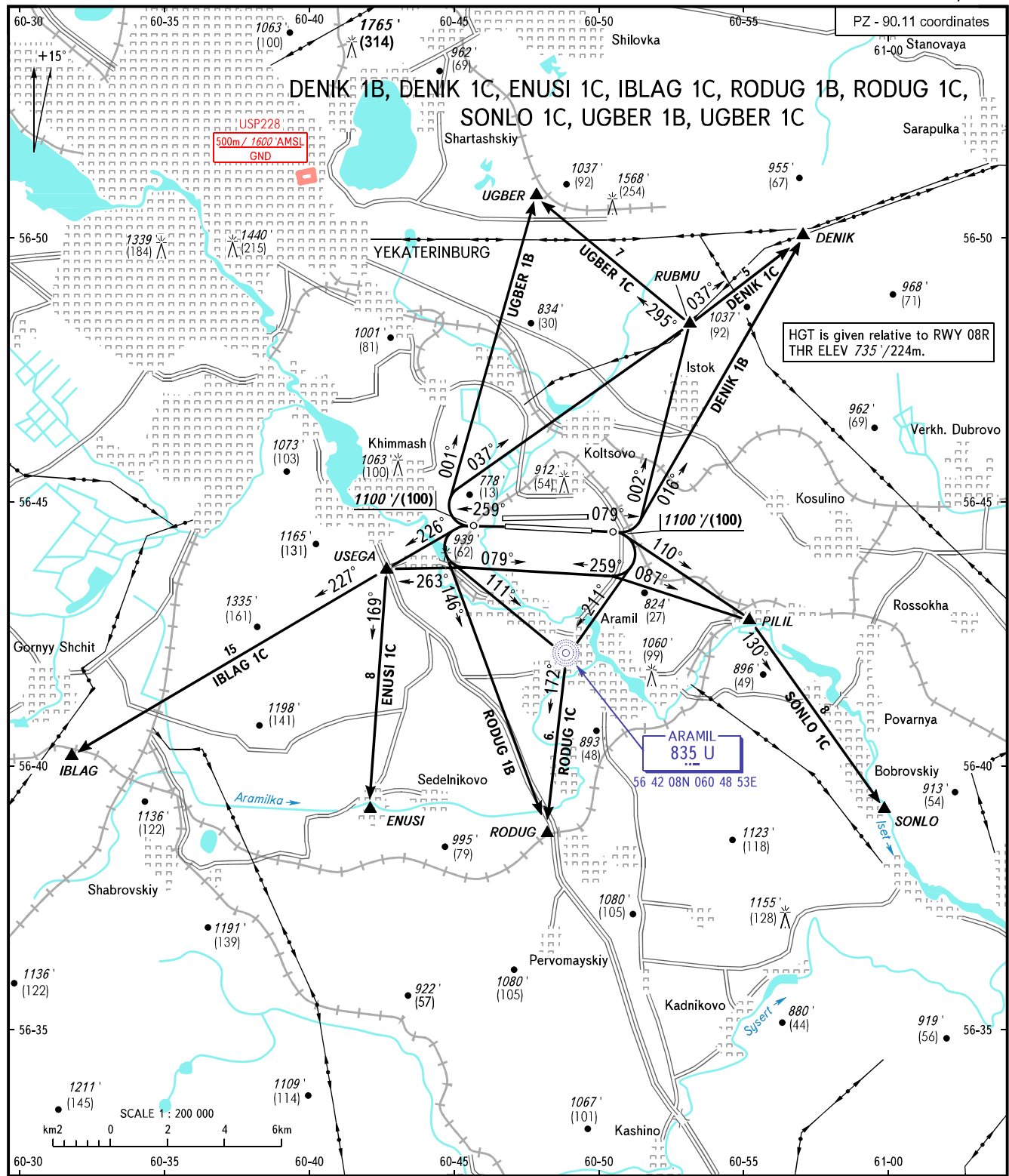


VFR  
DEPARTURE  
CHART

YEKATERINBURG, RUSSIA  
KOLTSOVO  
RWY 08R/26L

TRANSITION ALT: 4000'  
TRANSITION HGT: (1000)



KOLTSOVO RADAR 118.700  
KOLTSOVO START 124.300

- WARNING:**
1. Departure route is assigned by ATS unit.
  2. The initial turn to CRP RUBMU, DENIK shall be executed not earlier than reaching the opposite runway extremity.
  3. Departure routes RODUG 1B and RODUG 1C are assigned when there are no flights at Yekaterinburg/Aramil AD.

BEARINGS AND TRACKS ARE MAGNETIC  
ALTITUDES AND ELEVATION IN FEET  
HEIGHTS IN METRES  
DISTANCES IN KILOMETRES

Alt set: -QNH(QFE on req);  
-hPa(mm on req).

CHANGE: Heading, HGT