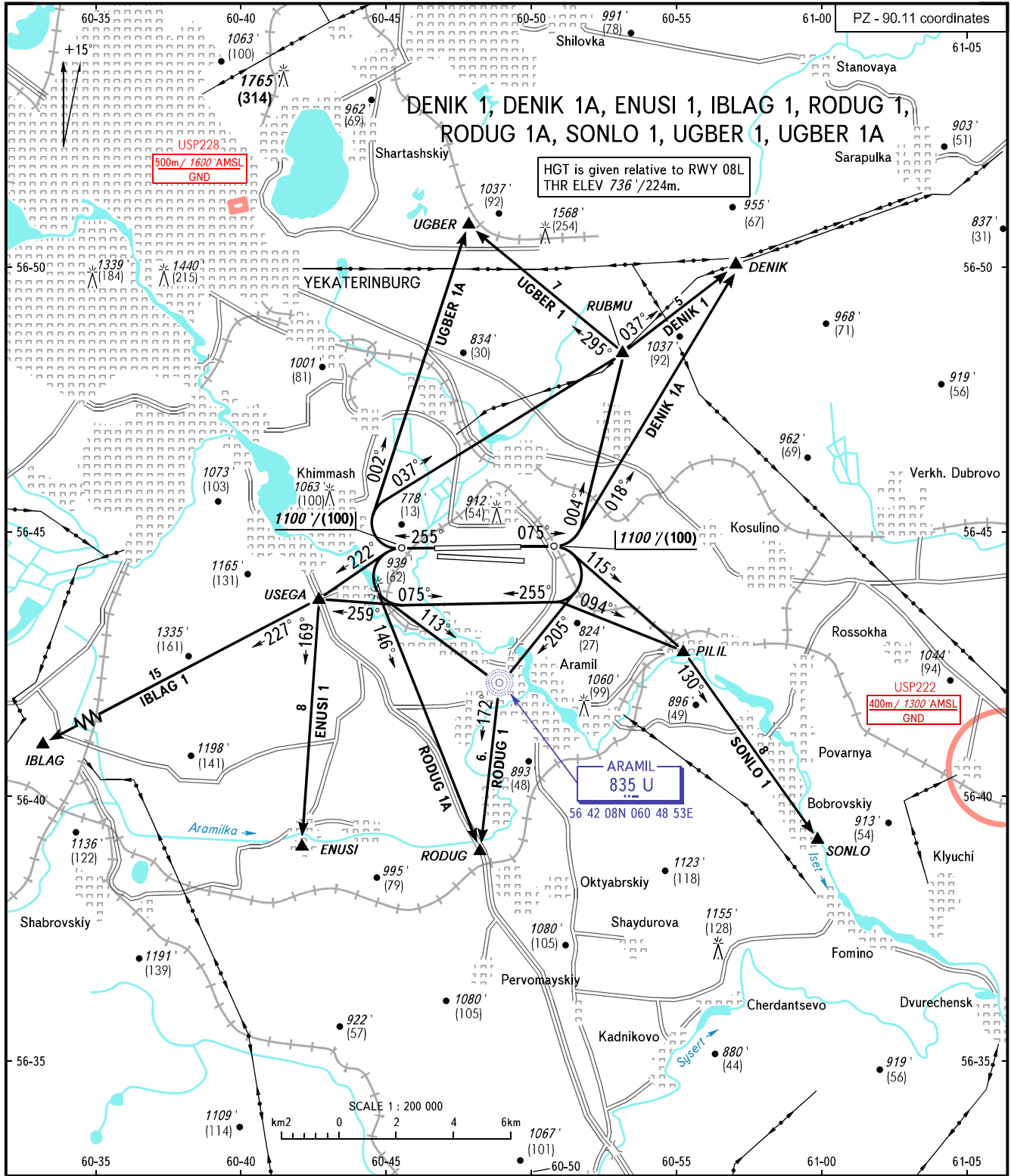


VFR
DEPARTURE
CHART

YEKATERINBURG, RUSSIA
KOLTSOVO
RWY 08L/26R

TRANSITION ALT: 4000'
TRANSITION HGT: (1000)



KOLTSOVO RADAR 118.700
KOLTSOVO START 124.300

WARNING:

1. Departure route is assigned by ATS unit.
2. The initial turn to CRP RUBMU, DENIK shall be executed not earlier than reaching the opposite runway extremity.
3. Departure routes RODUG 1 and RODUG 1A are assigned when there are no flights at Yekaterinburg/Aramil AD.

BEARINGS AND TRACKS ARE MAGNETIC
ALTITUDES AND ELEVATION IN FEET
HEIGHTS IN METRES
DISTANCES IN KILOMETRES

Alt set: -QNH(QFE on req);
-hPa(mm on req).

CHANGE: Heading, HGT