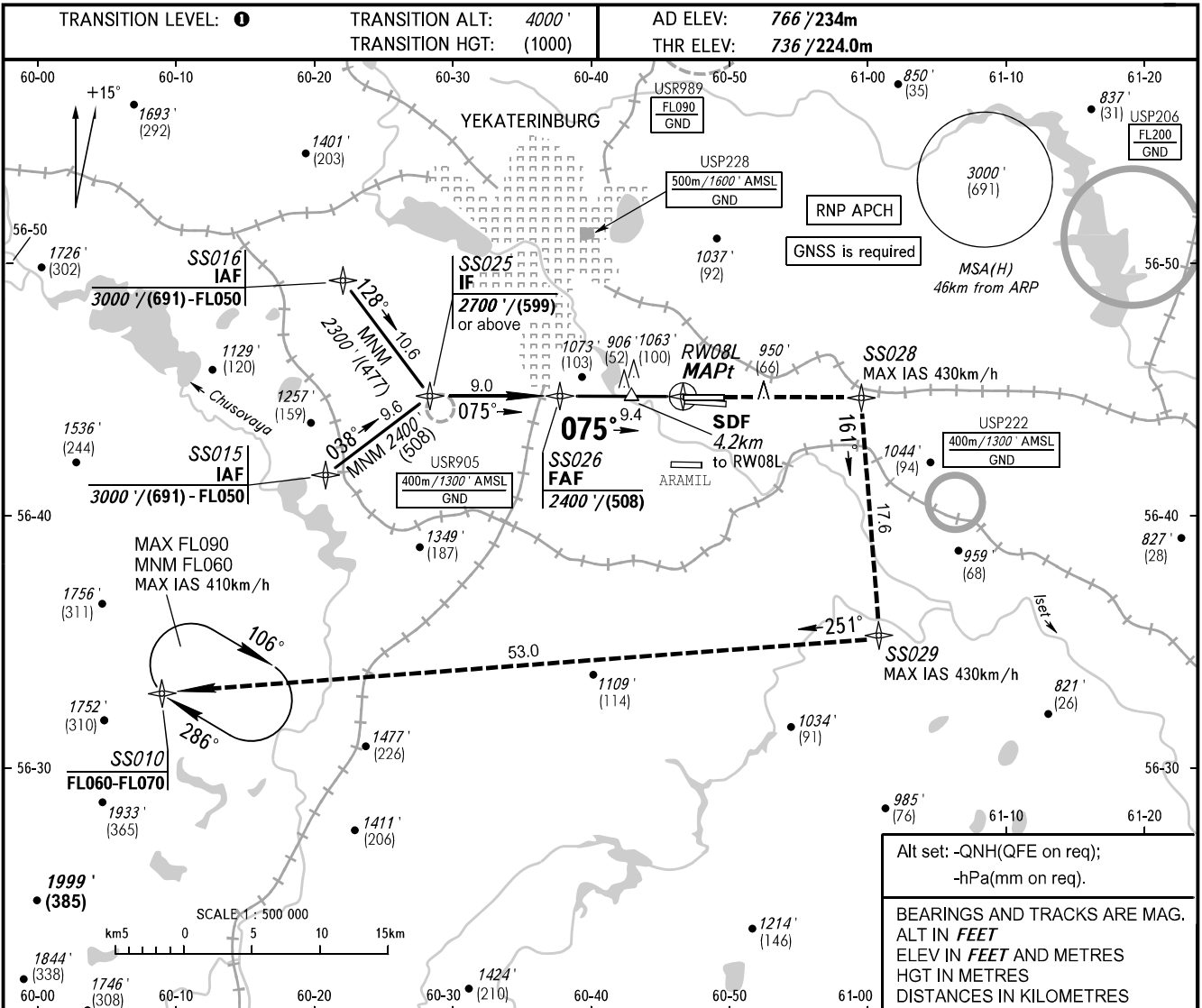


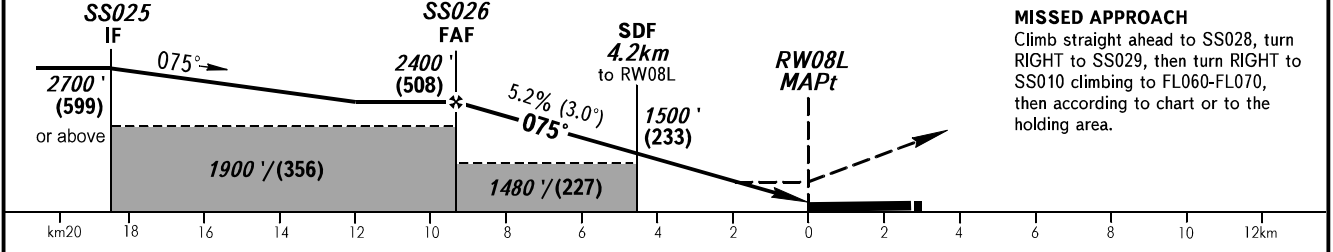
**INSTRUMENT
APPROACH
CHART - ICAO**

KOLTSOVO RADAR **118.700**
KOLTSOVO START **124.300**

YEKATERINBURG, RUSSIA
KOLTSOVO
RNP RWY 08L



DIST to RW08L	9.4	8.0	6.0	4.0
ALTITUDE/HEIGHT	2400' / (508)	2150' / (432)	1810' / (328)	1470' / (224)



MISSED APPROACH
Climb straight ahead to SS028, turn RIGHT to SS010, then turn RIGHT to SS010 climbing to FLO60-FLO70, then according to chart or to the holding area.

OCA(H)		A	B	C	D	① TRANSITION LEVEL:						
Straight-in Approach	LNAV	1160' (420') (130)	1160' (420') (130)	1160' (420') (130)	1160' (420') (130)	- FLO50 when QNH is 1013 hPa (760mm mercury column) or above;						
						- FLO60 when QNH is 977 hPa (733mm mercury column) or above, but less than 1013 hPa (760mm mercury column);						
Circling		1250' (480') (157)	1360' (600') (191)	1740' (970') (307)	1760' (1000') (313)	- FLO70 when QNH is less than 977 hPa (733mm mercury column).						
GROUND SPEED		km/h		150	180	210	240	270	300	330	360	390
RATE OF DESCENT		m/s		2.2	2.6	3.1	3.5	3.9	4.4	4.8	5.2	5.7
RATE OF DESCENT		ft/min		433	512	610	689	768	866	945	1024	1122

CHANGE: Missed approach