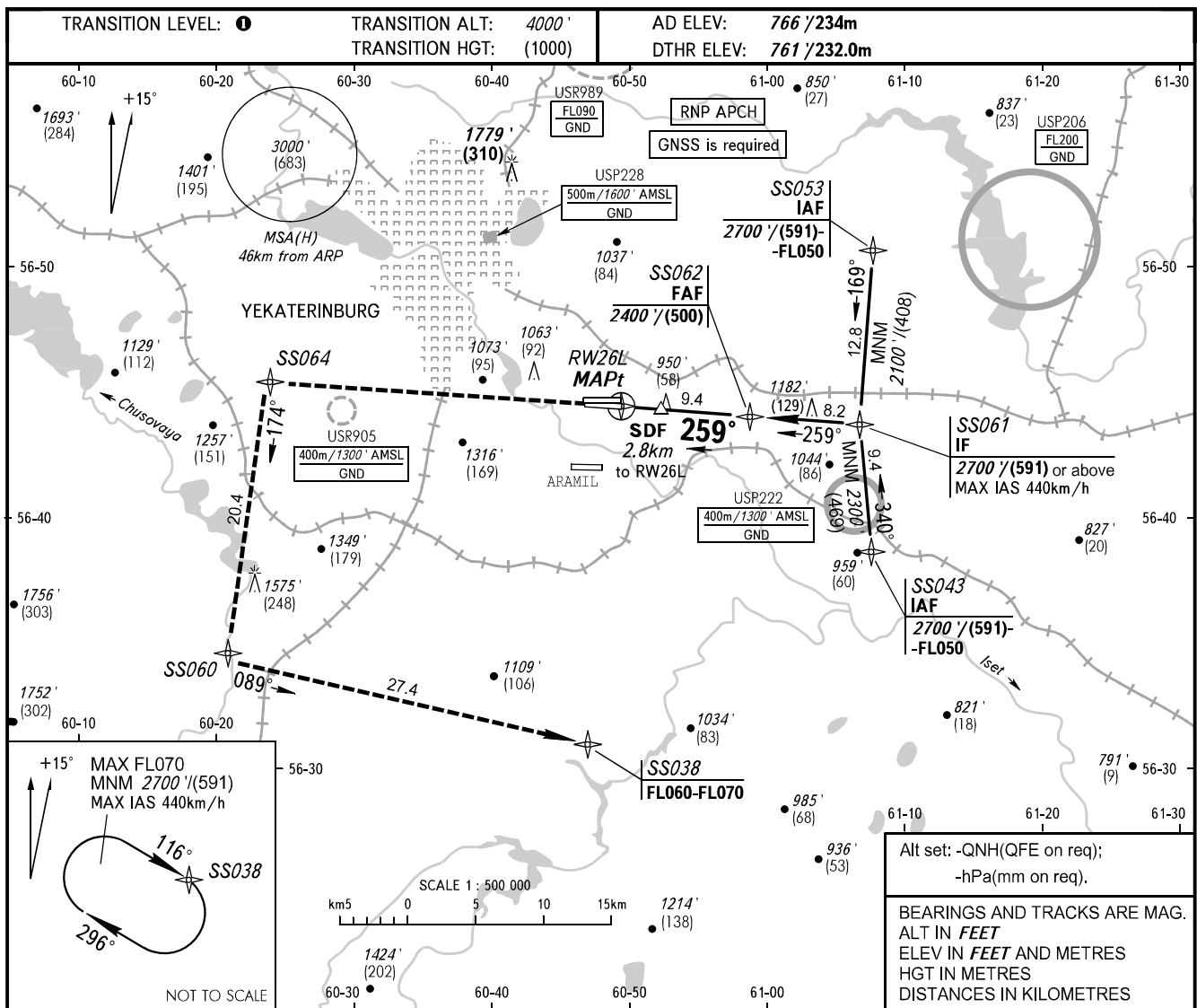


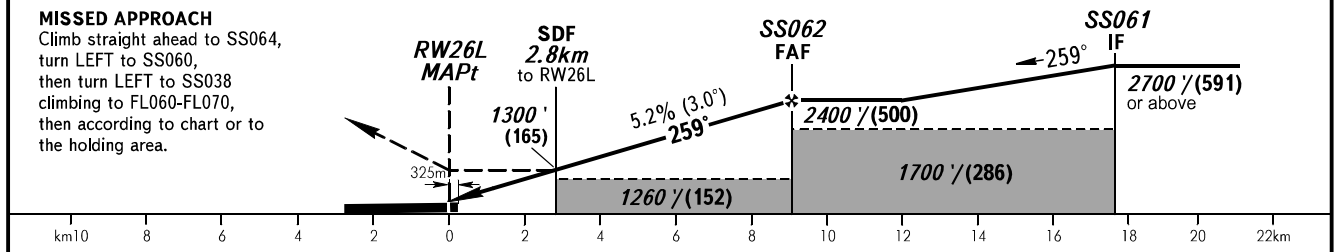
**INSTRUMENT
APPROACH
CHART - ICAO**

KOLTSOVO RADAR **118.700**
KOLTSOVO START **124.300**

YEKATERINBURG, RUSSIA
KOLTSOVO
RNP RWY 26L



DIST to RW26L	4.0	6.0	8.0	9.4
ALTITUDE/HEIGHT	1490' / (223)	1830' / (326)	2180' / (433)	2400' / (500)



OCA(H)		A	B	C	D	01 TRANSITION LEVEL: - FL050 when QNH is 1013 hPa (760mm mercury column) or above; - FL060 when QNH is 977 hPa (733mm mercury column) or above, but less than 1013 hPa (760mm mercury column); - FL070 when QNH is less than 977 hPa (733mm mercury column).					
Straight-in Approach	LNAV	1200' (440') (134)	1200' (440') (134)	1200' (440') (134)	1200' (440') (134)						
Circling		1250' (480') (149)	1360' (600') (183)	1740' (970') (299)	1760' (1000') (305)						
GROUND SPEED		km/h	150	180	210	240	270	300	330	360	390
RATE OF DESCENT		m/s	2.2	2.6	3.1	3.5	3.9	4.4	4.8	5.2	5.7
RATE OF DESCENT		ft/min	433	512	610	689	768	866	945	1024	1122