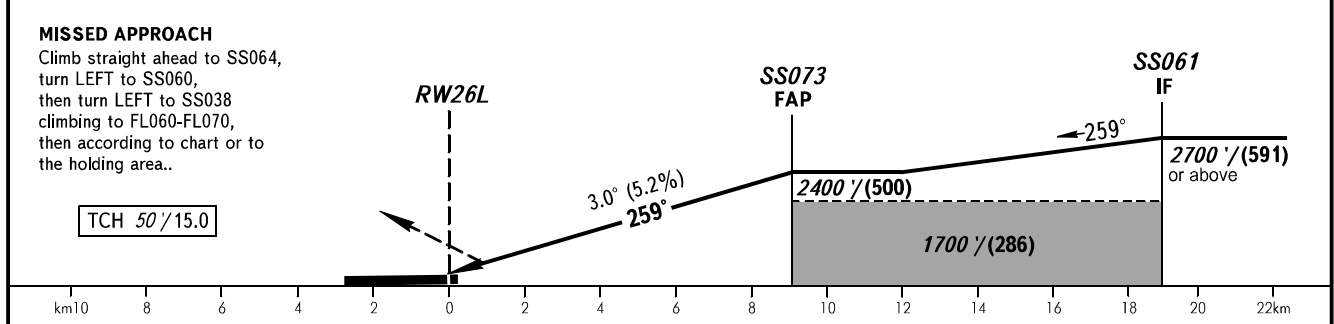
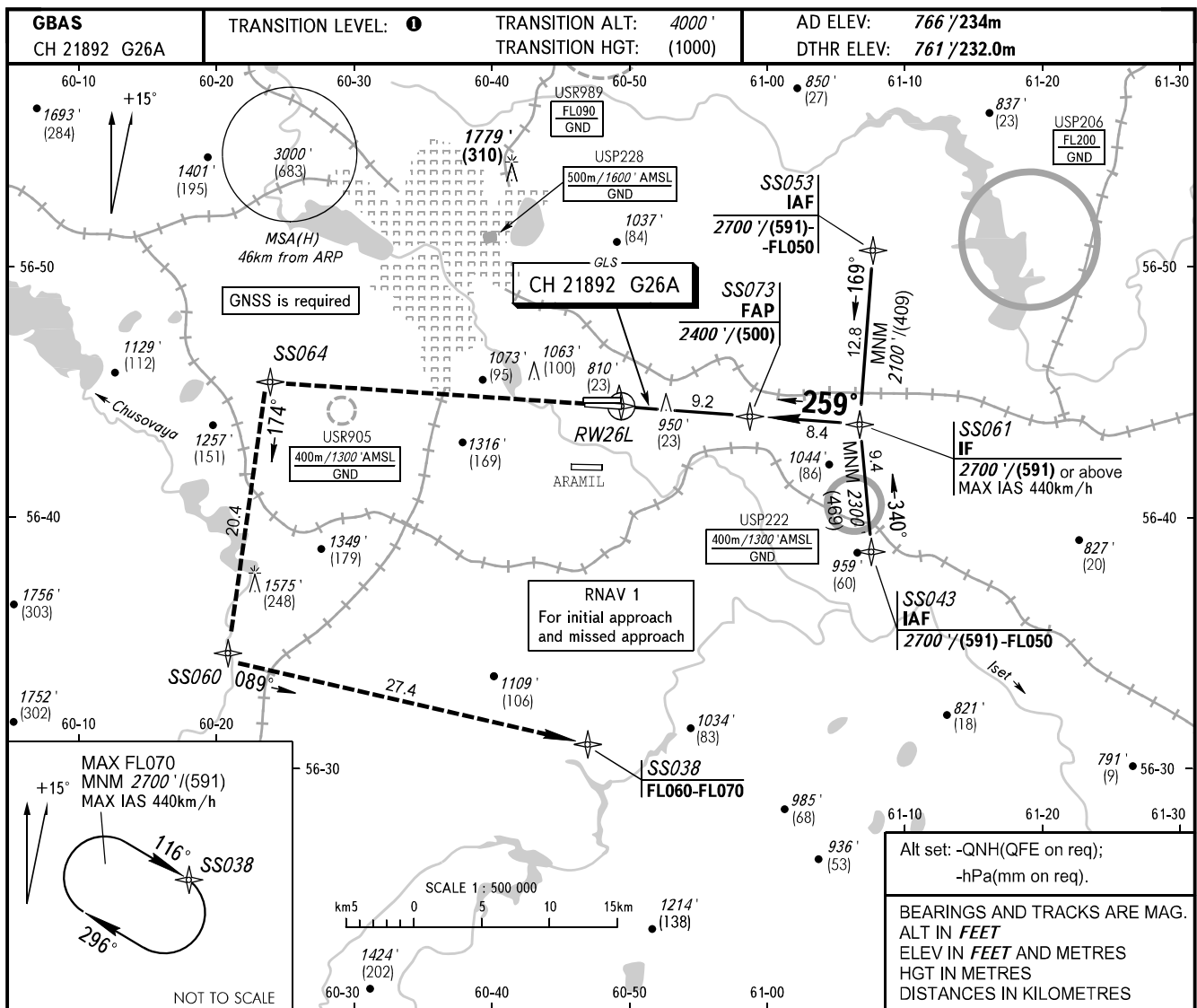


**INSTRUMENT
APPROACH
CHART - ICAO**

KOLTSOVO RADAR **118.700**
KOLTSOVO START **124.300**

YEKATERINBURG, RUSSIA
KOLTSOVO
GLS RWY 26L



OCA(H)		A	B	C	D	DL						
Straight-in Approach	CAT I	903' (142') (44)	914' (153') (47)	926' (165') (51)	940' (179') (55)	943' (182') (56)						
Circling		1250' (480') (149)	1360' (600') (183)	1740' (970') (299)	1760' (1000') (305)	1760' (1000') (305)						
GROUND SPEED		km/h		150	180	210	240	270	300	330	360	390
RATE OF DESCENT		m/s		2.2	2.6	3.1	3.5	3.9	4.4	4.8	5.2	5.7
RATE OF DESCENT		ft/min		433	512	610	689	768	866	945	1024	1122

① **TRANSITION LEVEL:**
- FL050 when QNH is 1013 hPa (760mm mercury column) or above;
- FL060 when QNH is 977 hPa (733mm mercury column) or above, but less than 1013 hPa (760mm mercury column);
- FL070 when QNH is less than 977 hPa (733mm mercury column).