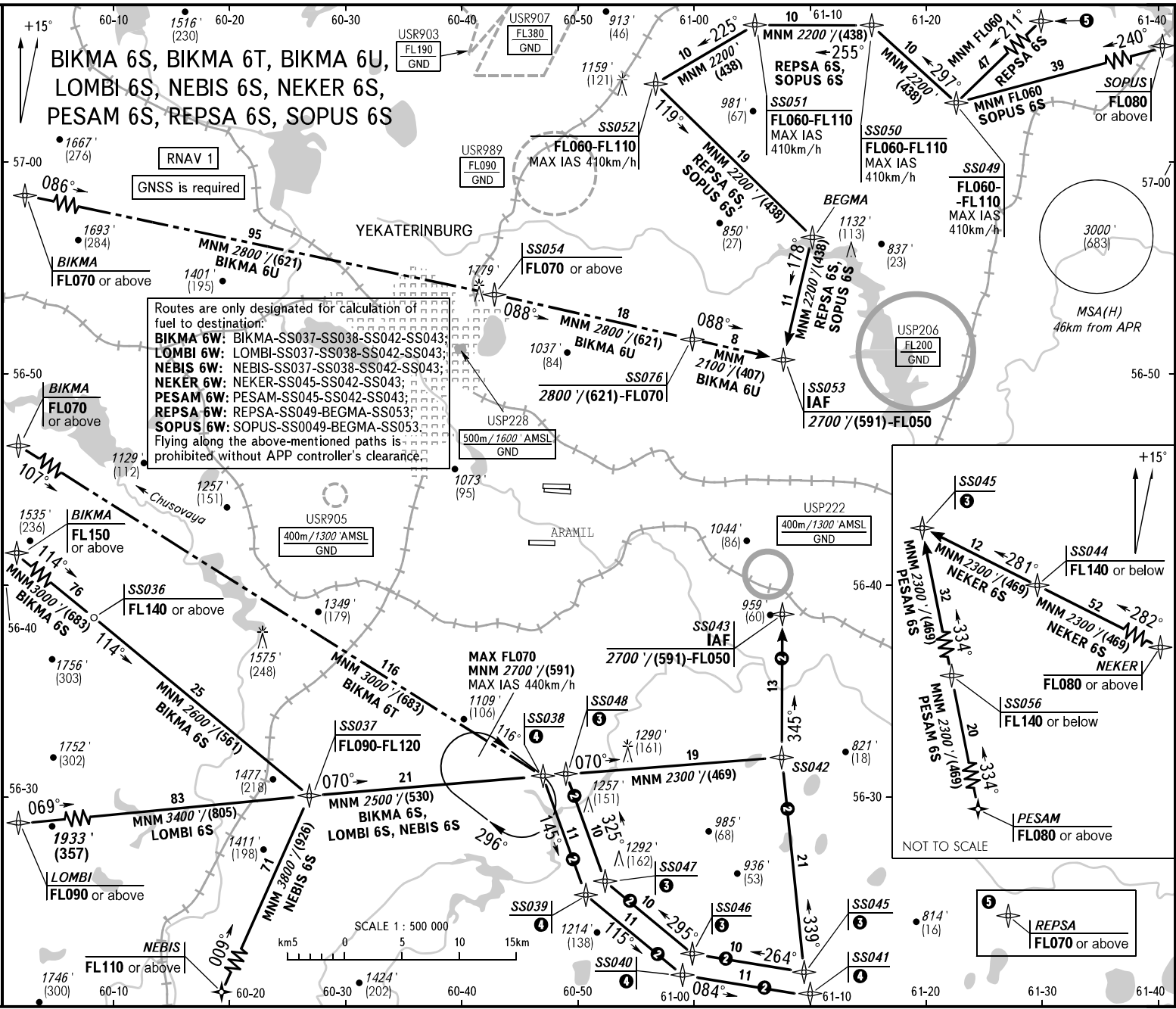


STANDARD ARRIVAL CHART
INSTRUMENT (STAR) - ICAO

TRANSITION
LEVEL: 1

YEKATERINBURG, RUSSIA
KOLITSOVO
RNAV RWY 26R, 26L



KOLITSOVO START
124.300
KOLITSOVO RADAR
118.700
KOLITSOVO APPROACH
125.900

BEARINGS AND TRACKS ARE MAGNETIC
ALTITUDES AND ELEVATION IN FEET
HEIGHTS IN METRES
DISTANCES IN KILOMETRES

Alt set: -QNH(QFE on req);
-hPa(m on req).