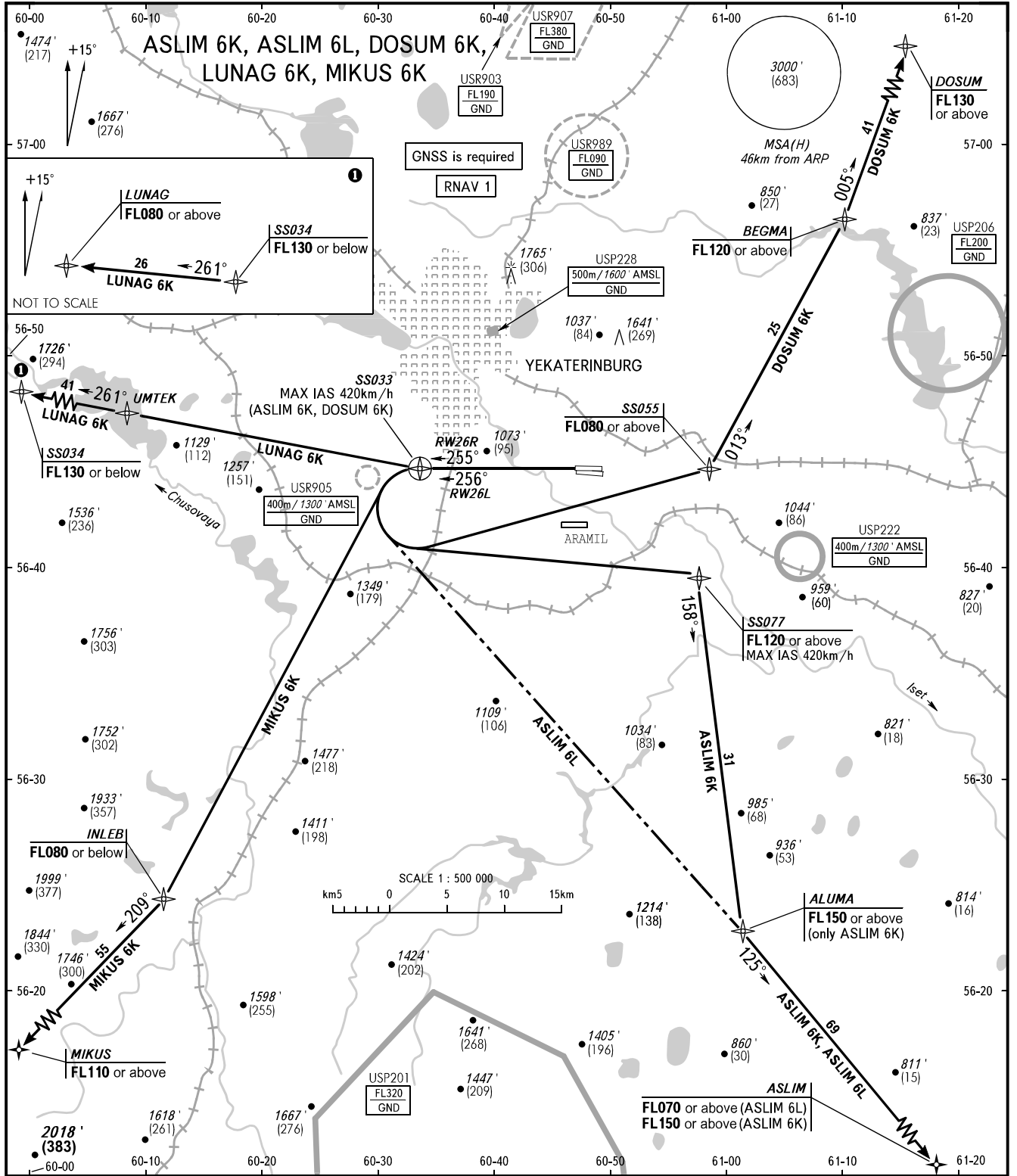


STANDARD DEPARTURE CHART
INSTRUMENT (SID) - ICAO

YEKATERINBURG, RUSSIA
KOLTSOVO
RNAV RWY 26R, 26L

TRANSITION ALT: 4000'
TRANSITION HGT: (1000)



KOLTSOVO START 124.300
KOLTSOVO RADAR 118.700
KOLTSOVO APPROACH 125.900

WARNING
The minimum climb gradients are as follows
(required due to the airspace structure):
- 7.0% up to FL120 for ASLIM 6K;
- 4.4% up to FL120 for DOSUM 6K.

BEARINGS AND TRACKS ARE MAGNETIC ALTITUDES AND ELEVATION IN FEET HEIGHTS IN METRES DISTANCES IN KILOMETRES	Alt set: -QNH(QFE on req); -hPa(mm on req).
---	--