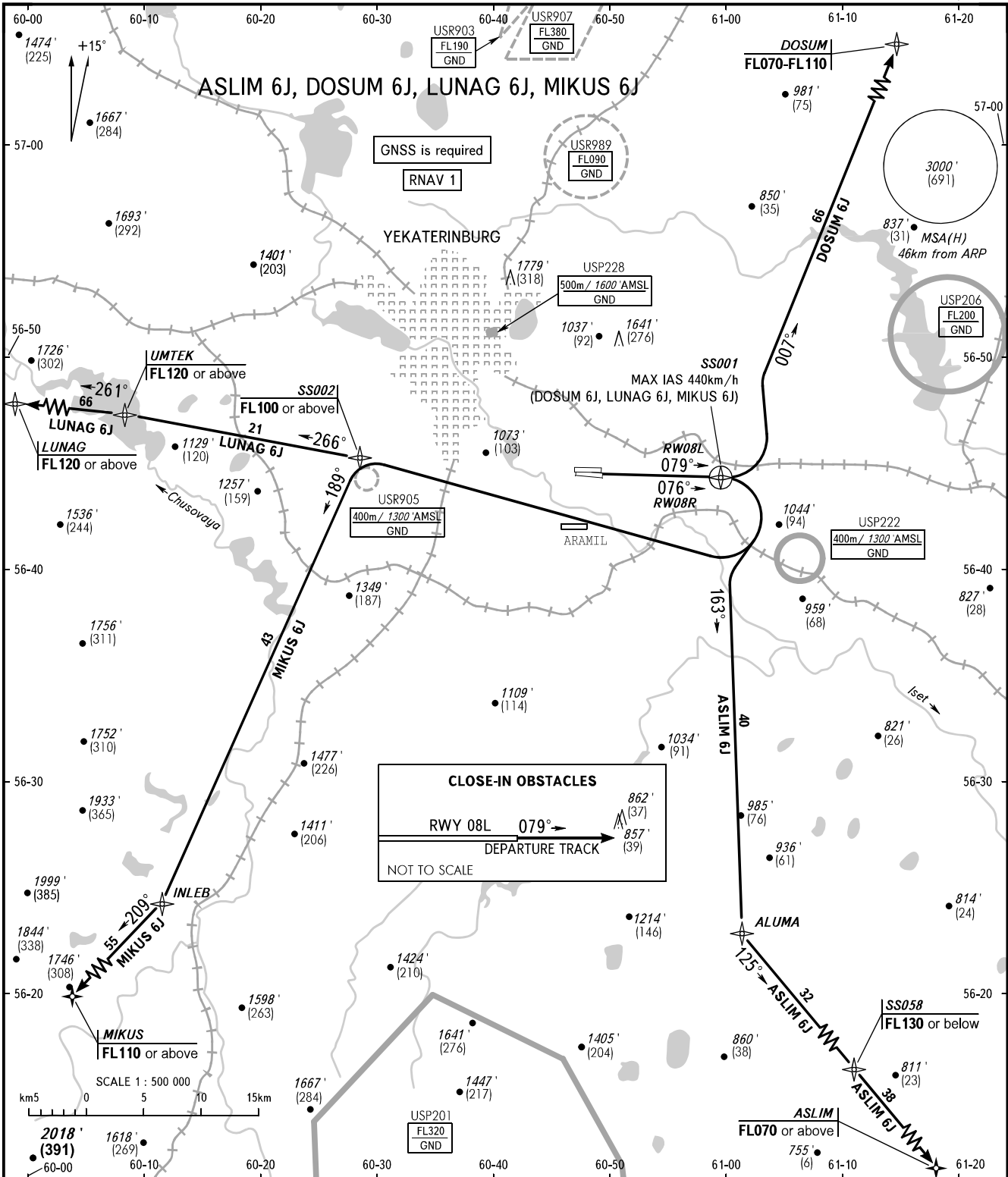


STANDARD DEPARTURE CHART  
INSTRUMENT (SID) - ICAO

YEKATERINBURG, RUSSIA  
KOLTSOVO  
RNAV RWY 08R, 08L

TRANSITION ALT: **4000'**  
TRANSITION HGT: **(1000)**



**CLOSE-IN OBSTACLES**

RWY 08L 079° → 862' (37)  
DEPARTURE TRACK → 857' (39)

NOT TO SCALE

KOLTSOVO START **124.300**  
KOLTSOVO RADAR **118.700**  
KOLTSOVO APPROACH **125.900**

**WARNING:**

- The minimum climb gradients are as follows (required due to the airspace structure):  
- 5.0% up to FL100 for LUNAG 6J, MIKUS 6J.
- There are close-in obstacles.

BEARINGS AND TRACKS ARE MAGNETIC  
ALTITUDES AND ELEVATION IN **FEET**  
HEIGHTS IN METRES  
DISTANCES IN KILOMETRES

Alt set: -QN(H)(QFE on req);  
-hPa(mm on req).

CHANGE: Heading, HGT