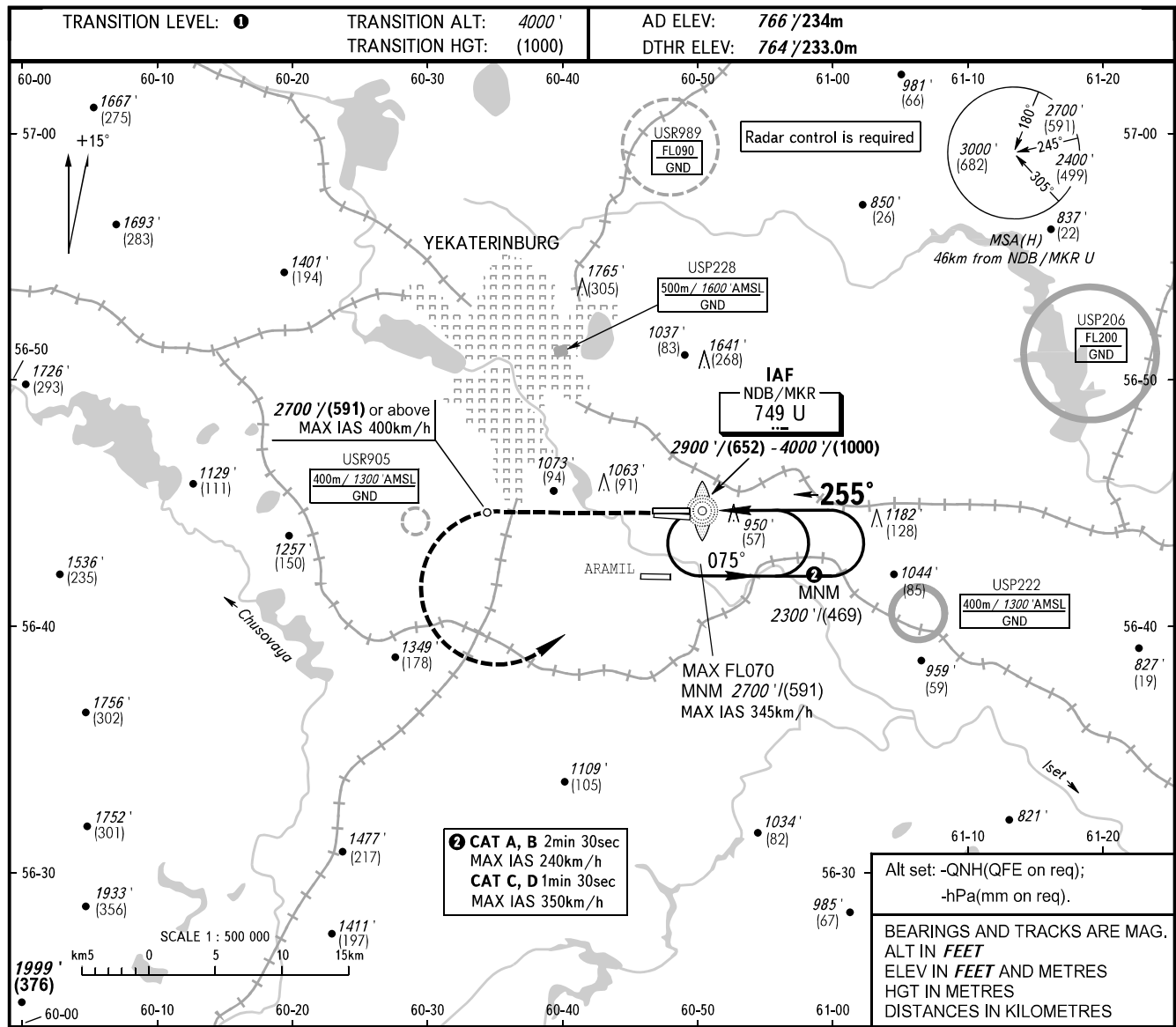


**INSTRUMENT
APPROACH
CHART - ICAO**

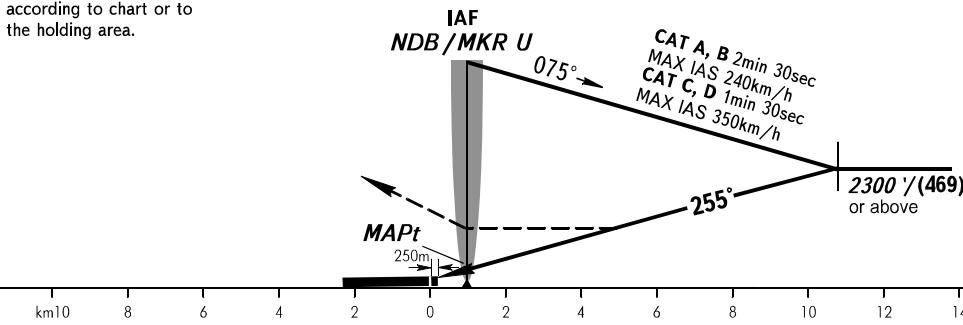
KOLTSOVO RADAR **118.700**
KOLTSOVO START **124.300**

YEKATERINBURG, RUSSIA
KOLTSOVO
NDB Y RWY 26R



MISSED APPROACH

Climb straight ahead to 2700'/(591) or above, turn LEFT to NDB/MKR U climbing to 2900'/(652) or above, then according to chart or to the holding area.



OCA(H)	A	B	C	D
Straight-in Approach	1480' (720') (219)	1480' (720') (219)	1480' (720') (219)	1480' (720') (219)
Circling	1480' (720') (219)	1480' (720') (219)	1740' (970') (298)	1760' (1000') (304)

1 **TRANSITION LEVEL:**
- FL050 when QNH is 1013 hPa (760mm mercury column) or above;
- FL060 when QNH is 977 hPa (733mm mercury column) or above, but less than 1013 hPa (760mm mercury column);
- FL070 when QNH is less than 977 hPa (733mm mercury column).

NOTE:
1. Turn before MAPt is prohibited.
2. Timing not authorized for defining MAPt.