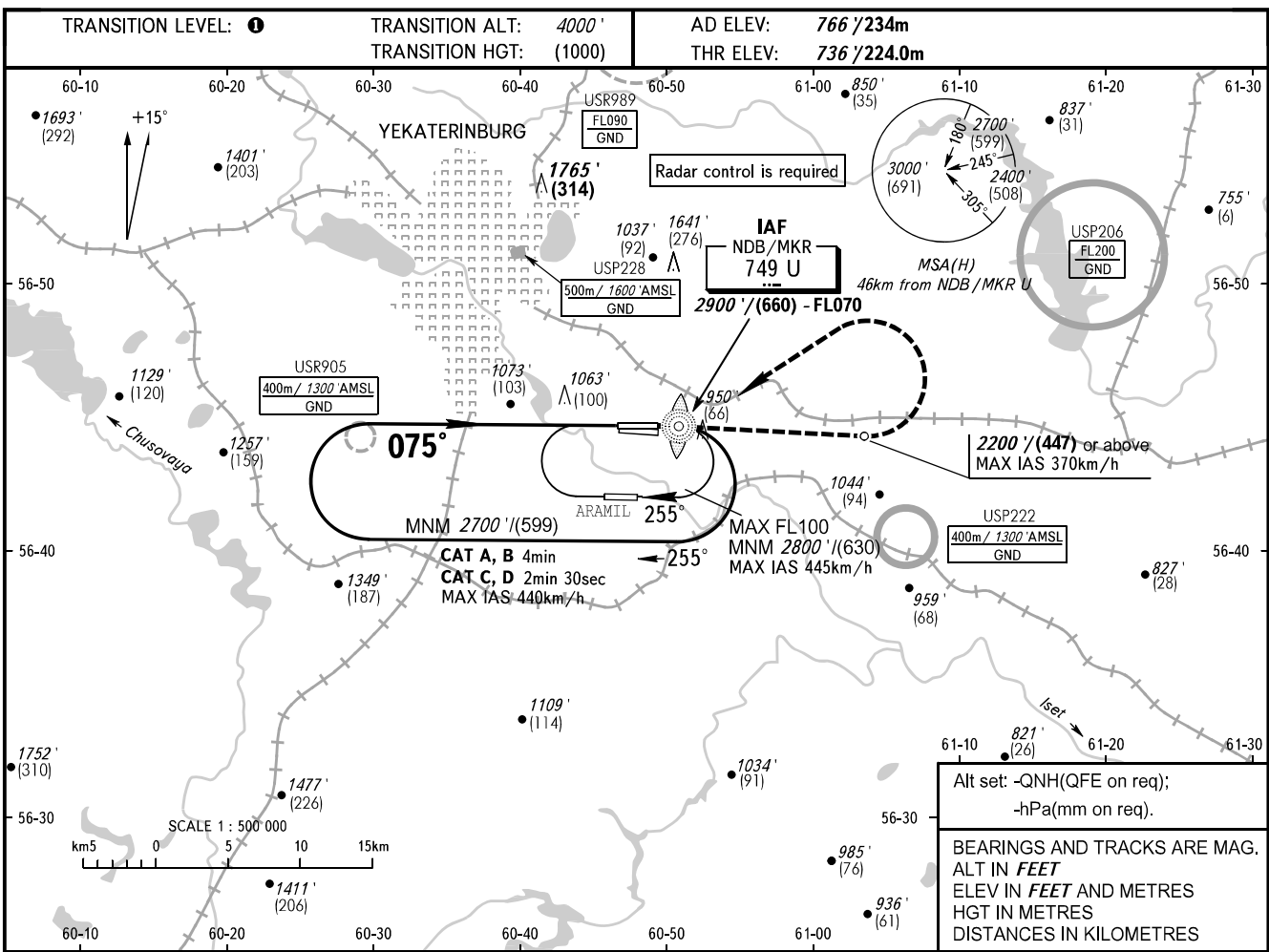


**INSTRUMENT  
APPROACH  
CHART - ICAO**

KOLTSOVO RADAR **118.700**  
KOLTSOVO START **124.300**

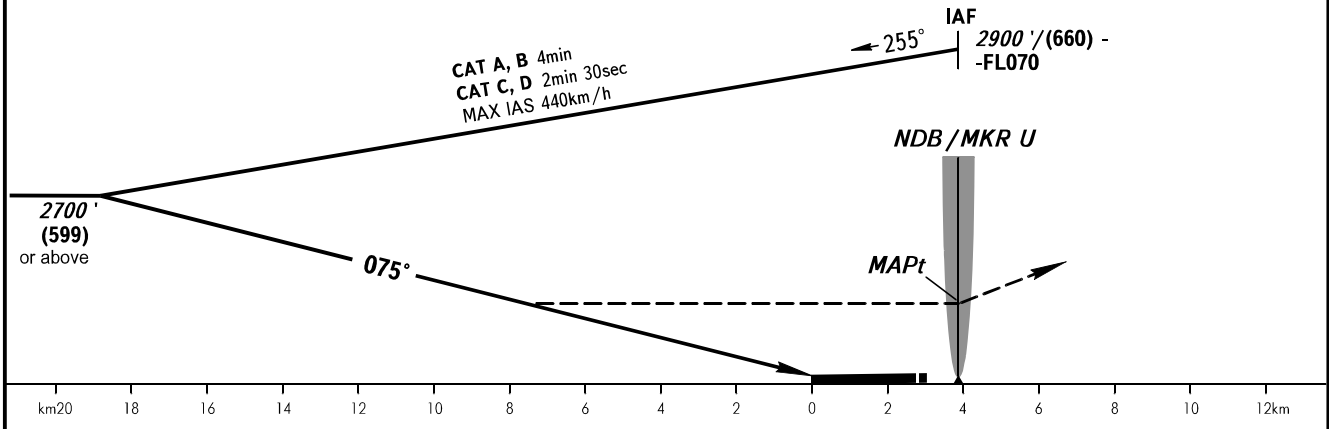
**YEKATERINBURG, RUSSIA**  
KOLTSOVO  
NDB Y RWY 08L



Alt set: -QNH(QFE on req);  
-hPa(mm on req).

BEARINGS AND TRACKS ARE MAG.  
ALT IN FEET  
ELEV IN FEET AND METRES  
HGT IN METRES  
DISTANCES IN KILOMETRES

**MISSED APPROACH**  
Climb straight ahead to 2200' / (447) or above, turn LEFT to NDB/MKR U climbing to 2900' / (660) or above, then according to chart or to the holding area.



OCA(H)	A	B	C	D
Straight-in Approach	1640' (910') (276)	1640' (910') (276)	1640' (910') (276)	1640' (910') (276)
Circling	1640' (910') (276)	1640' (910') (276)	1740' (970') (307)	1760' (1000') (313)

**0** TRANSITION LEVEL:  
- FL050 when QNH is 1013 hPa (760mm mercury column) or above;  
- FL060 when QNH is 977 hPa (733mm mercury column) or above,  
but less than 1013 hPa (760mm mercury column);  
- FL070 when QNH is less than 977 hPa (733mm mercury column).

**NOTE:**  
1. Turn before MAPt is prohibited.  
2. Timing not authorized for defining MAPt.

CHANGE: Heading, HGT