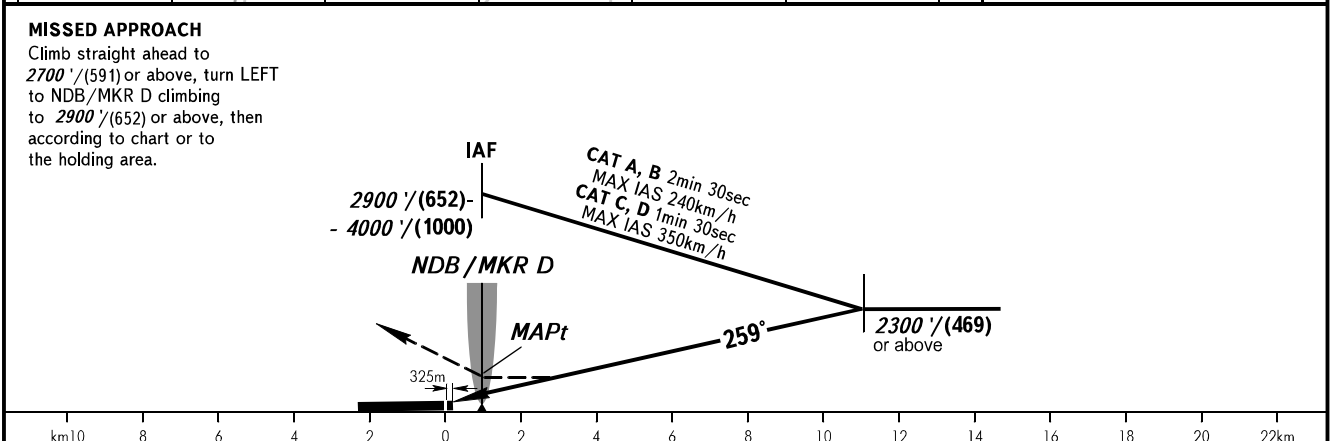
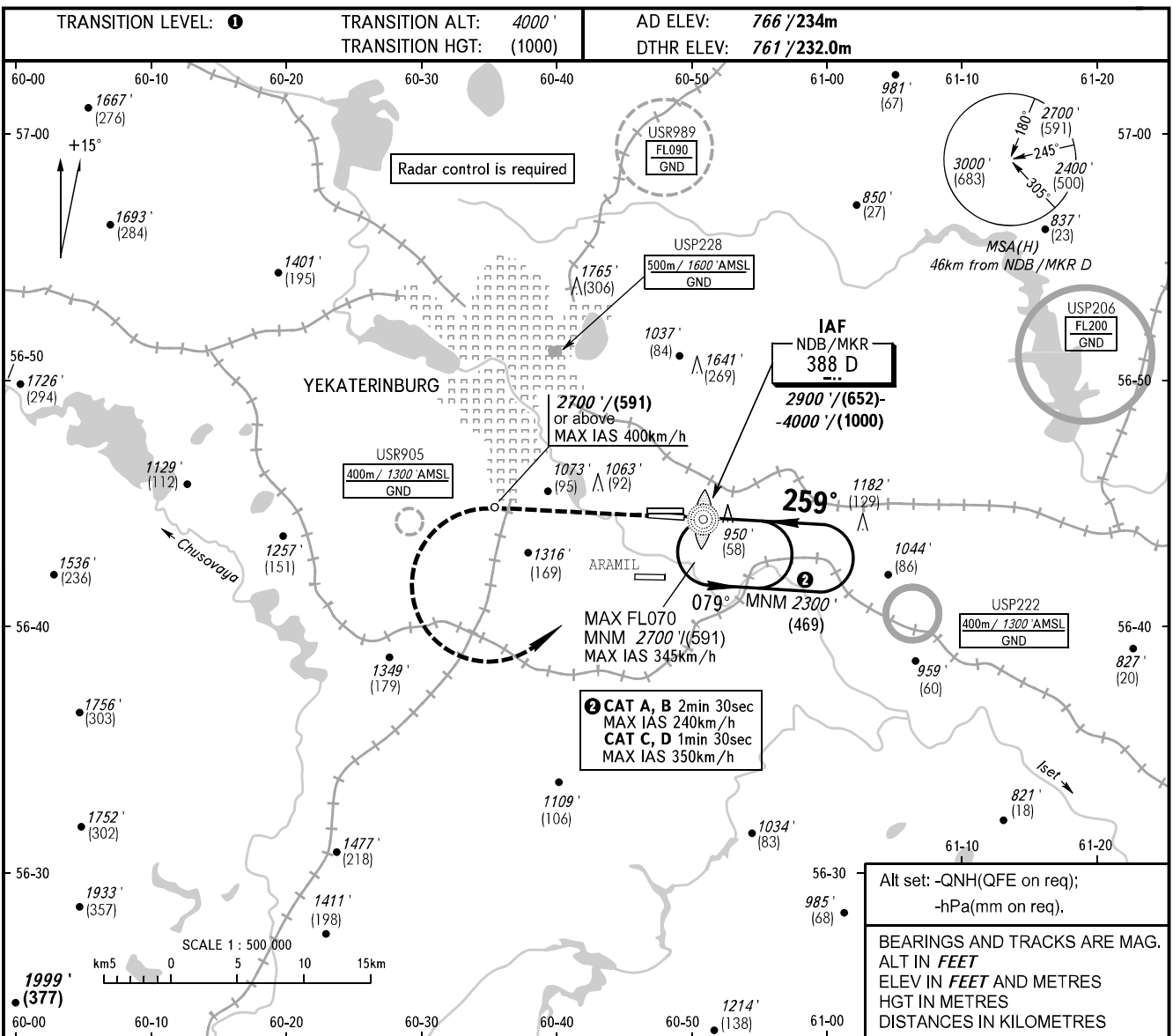


**INSTRUMENT
APPROACH
CHART - ICAO**

KOLTSOVO RADAR **118.700**
KOLTSOVO START **124.300**

YEKATERINBURG, RUSSIA
KOLTSOVO
NDB Y RWY 26L



OCA(H)	A	B	C	D
Straight-in Approach	1480' (720') (219)	1480' (720') (219)	1480' (720') (219)	1480' (720') (219)
Circling	1480' (720') (219)	1480' (720') (219)	1740' (970') (299)	1760' (1000') (305)

① TRANSITION LEVEL:
- FL050 when QNH is 1013 hPa (760mm mercury column) or above;
- FL060 when QNH is 977 hPa (733mm mercury column) or above, but less than 1013 hPa (760mm mercury column);
- FL070 when QNH is less than 977 hPa (733mm mercury column).

NOTE:
1. Turn before MAPt is prohibited.
2. Timing not authorized for defining MAPt.