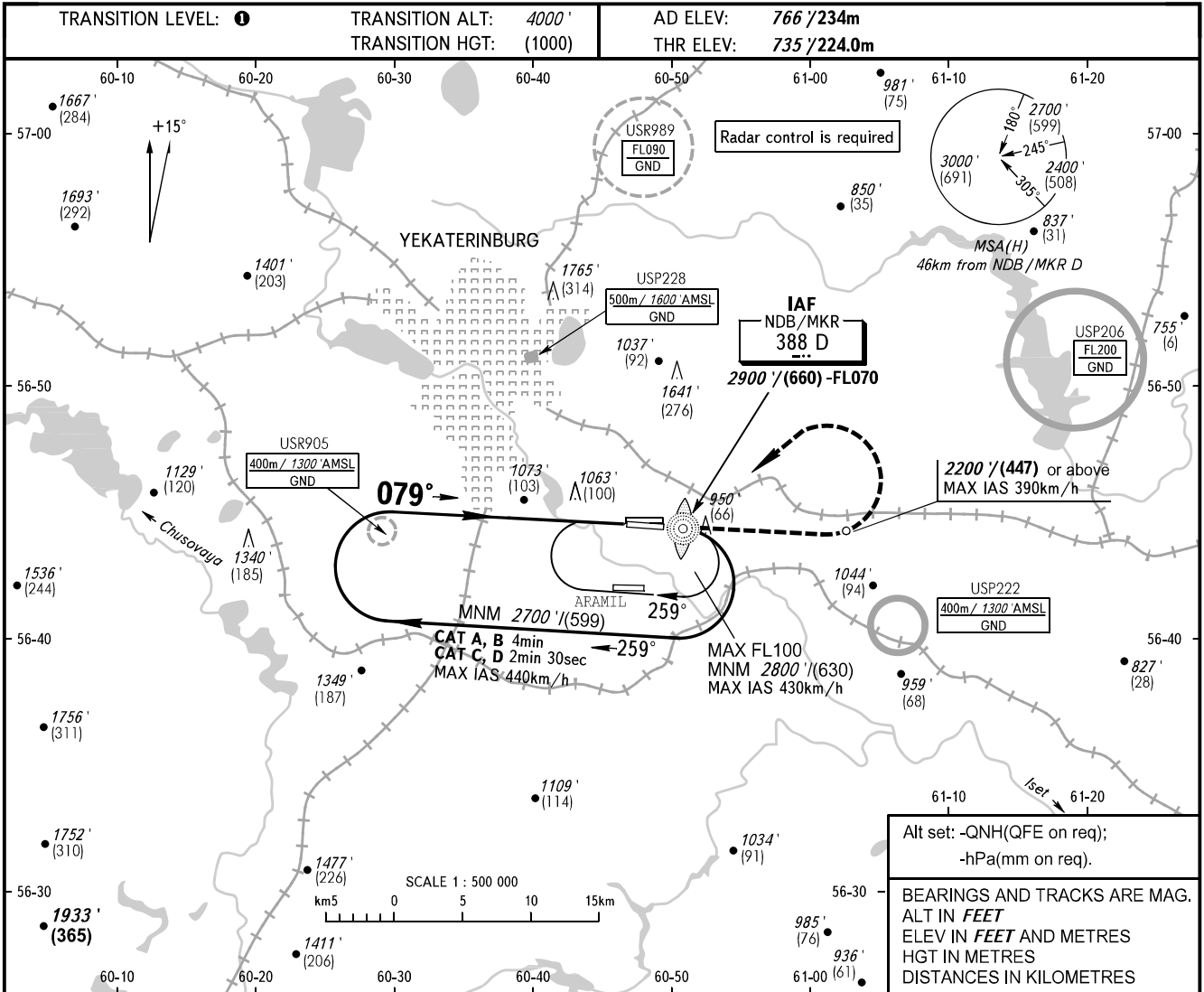


**INSTRUMENT
APPROACH
CHART - ICAO**

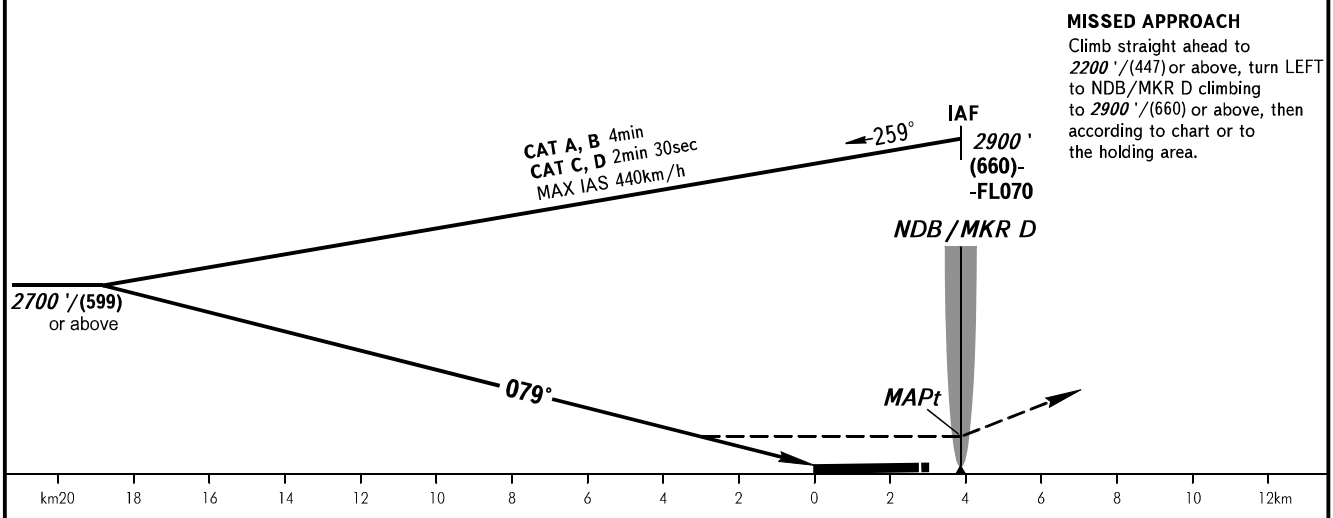
KOLTSOVO RADAR **118.700**
KOLTSOVO START **124.300**

YEKATERINBURG, RUSSIA
KOLTSOVO
NDB Y RWY 08R



Alt set: -QNH(QFE on req);
-hPa(mm on req).

BEARINGS AND TRACKS ARE MAG.
ALT IN FEET
ELEV IN FEET AND METRES
HGT IN METRES
DISTANCES IN KILOMETRES



MISSED APPROACH
Climb straight ahead to
2200'/(447) or above, turn LEFT
to NDB/MKR D climbing
to 2900'/(660) or above, then
according to chart or to
the holding area.

OCA(H)	A	B	C	D
Straight-in Approach	1640' (900') (276)	1640' (900') (276)	1640' (900') (276)	1640' (900') (276)
Circling	1640' (900') (276)	1640' (900') (276)	1740' (970') (307)	1760' (1000') (313)

1 TRANSITION LEVEL:
- FL050 when QNH is 1013 hPa (760mm mercury column) or above;
- FL060 when QNH is 977 hPa (733mm mercury column)
or above, but less than 1013 hPa (760mm mercury column);
- FL070 when QNH is less than 977 hPa (733mm mercury column).

NOTE:
1. Turn before MAPt is prohibited.
2. Timing not authorized for defining MAPt.