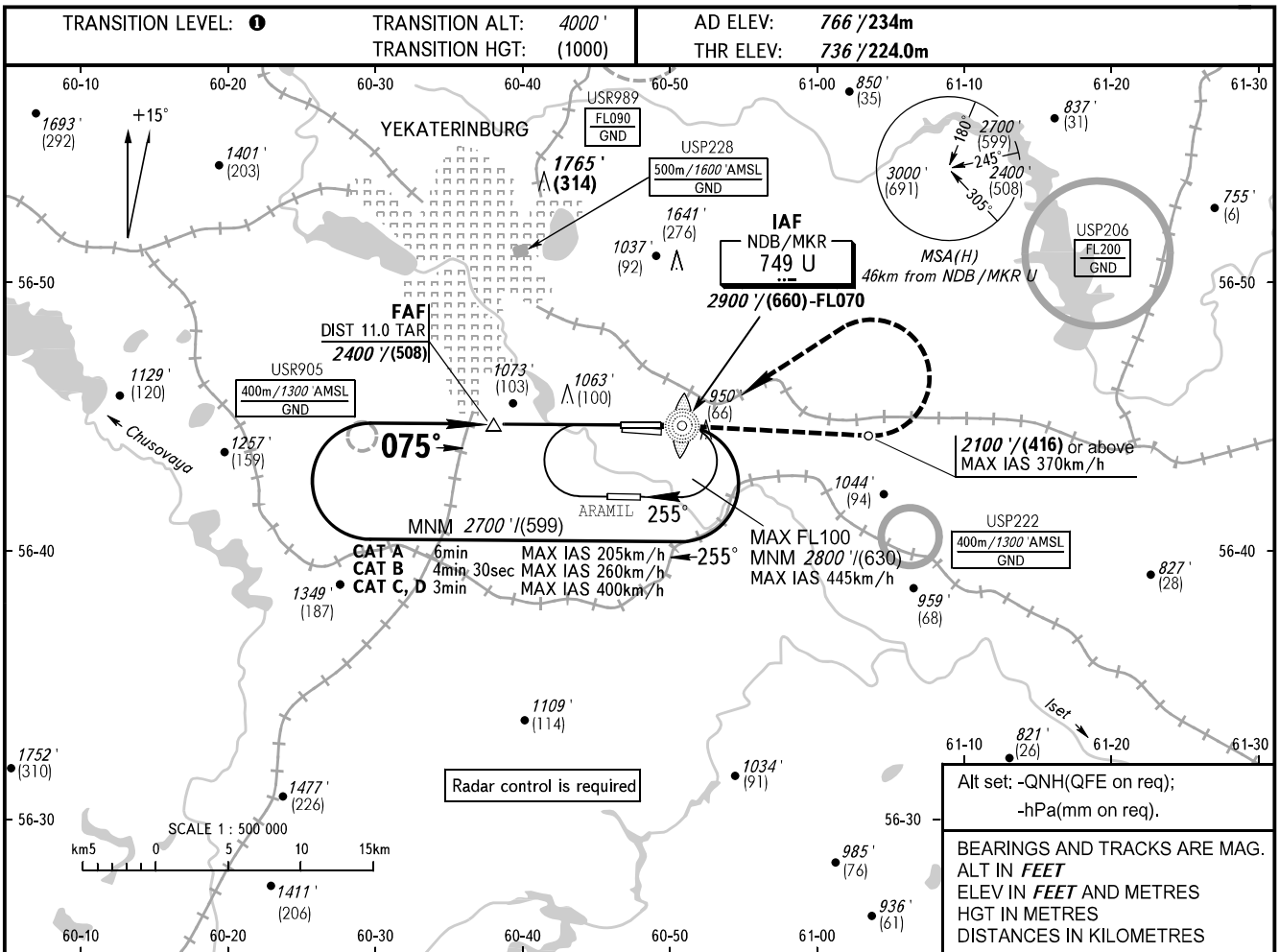


**INSTRUMENT
APPROACH
CHART - ICAO**

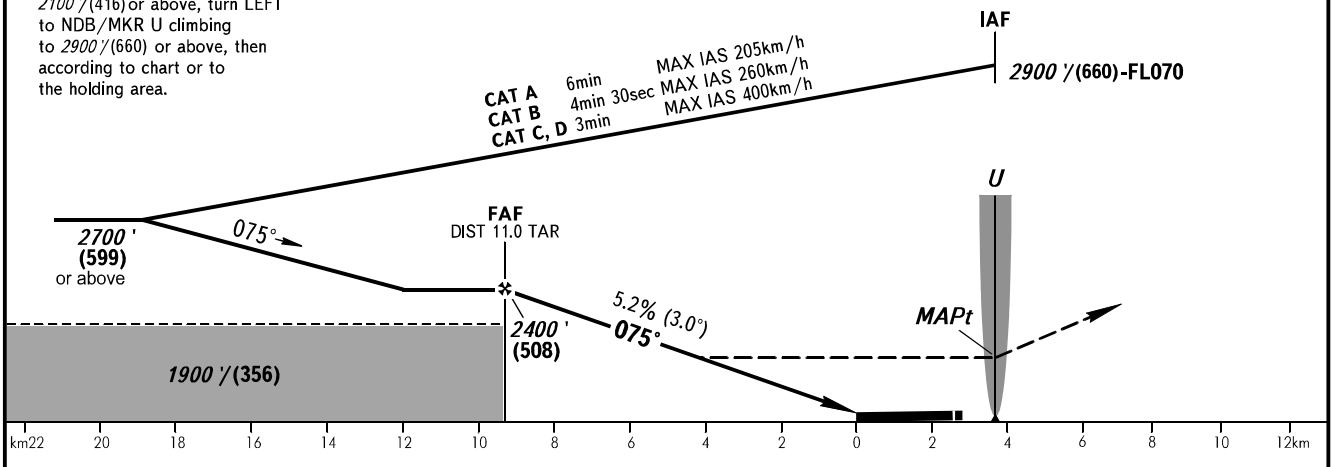
KOLTSOVO RADAR **118.700**
KOLTSOVO START **124.300**

YEKATERINBURG, RUSSIA
KOLTSOVO
NDB Z RWY 08L



MISSED APPROACH

Climb straight ahead to 2100' / (416) or above, turn LEFT to NDB/MKR U climbing to 2900' / (660) or above, then according to chart or to the holding area.



OCA(H)	A	B	C	D	1. TRANSITION LEVEL: - FL050 when QNH is 1013 hPa (760mm mercury column) or above; - FL060 when QNH is 977 hPa (733mm mercury column) or above, but less than 1013 hPa (760mm mercury column); - FL070 when QNH is less than 977 hPa (733mm mercury column).						
Straight-in Approach	1490' (760') (230)	1490' (760') (230)	1490' (760') (230)	1490' (760') (230)	NOTE: 1. Turn before MAPt is prohibited. 2. Timing not authorized for defining MAPt.						
	1490' (760') (230)	1490' (760') (230)	1740' (970') (307)	1760' (1000') (313)							
Circling	1490' (760') (230)	1490' (760') (230)	1740' (970') (307)	1760' (1000') (313)							
GROUND SPEED	km/h		150	180	210	240	270	300	330	360	390
RATE OF DESCENT	m/s		2.2	2.6	3.1	3.5	3.9	4.4	4.8	5.2	5.7
RATE OF DESCENT	ft/min		433	512	610	689	768	866	945	1024	1124

CHANGE: Heading, HGT