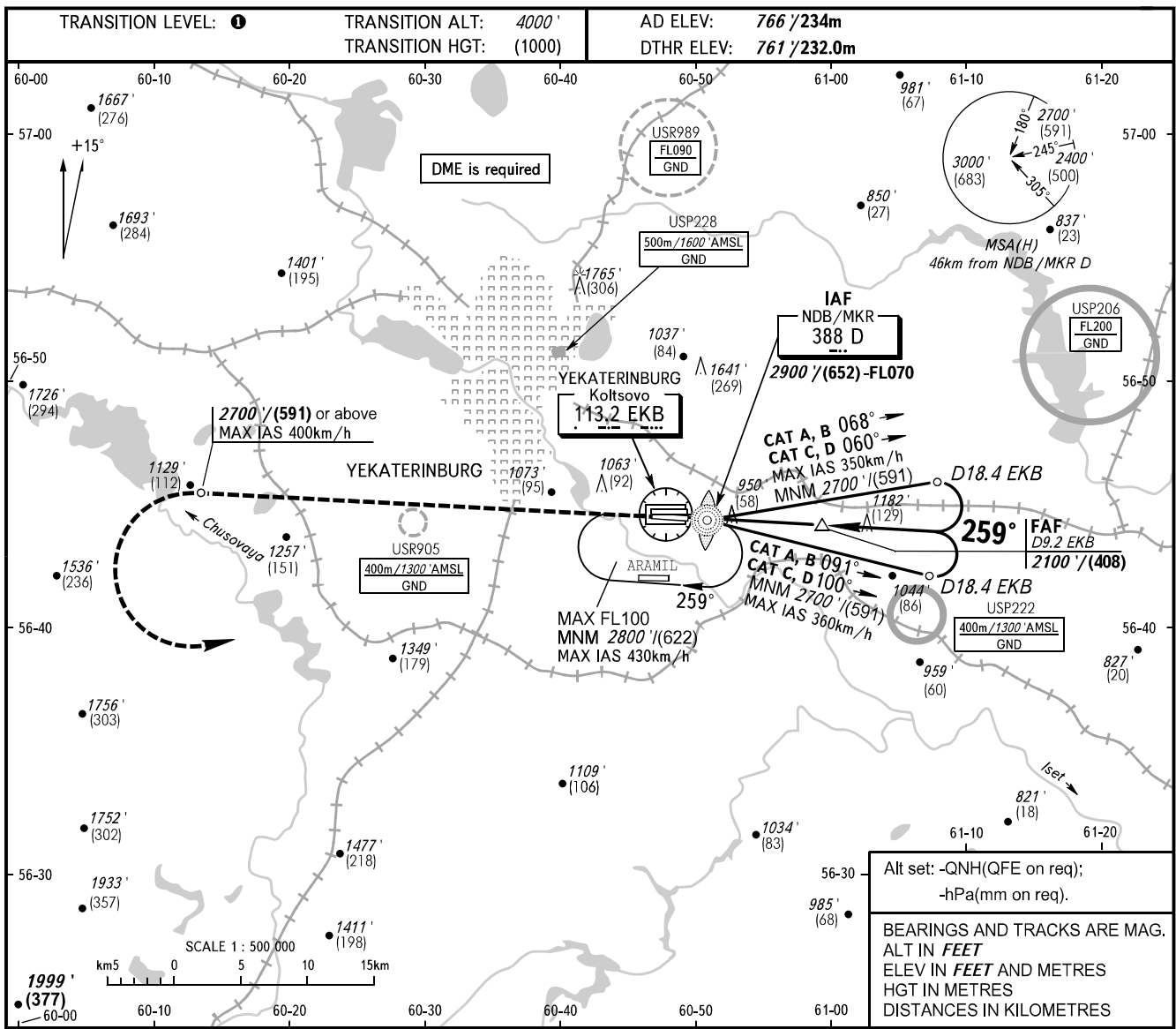


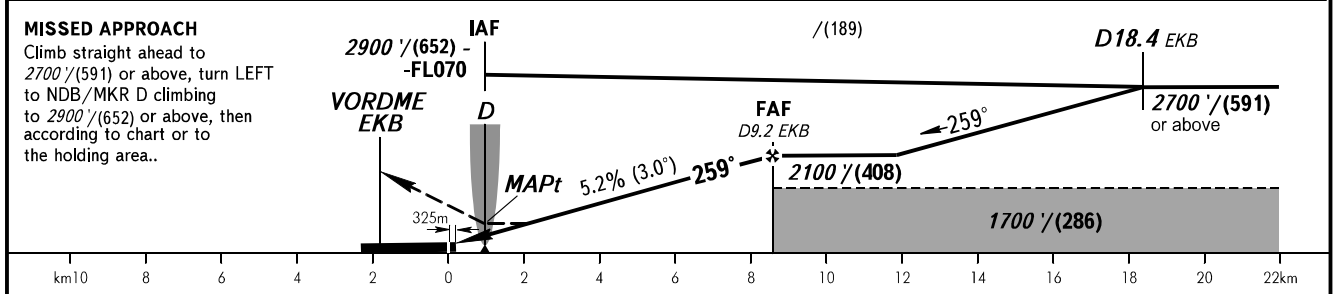
**INSTRUMENT
APPROACH
CHART - ICAO**

KOLTSOVO RADAR	118.700
KOLTSOVO START	124.300

YEKATERINBURG, RUSSIA
KOLTSOVO
NDB Z RWY 26L



DME EKB	5.0	7.0	9.0	9.2
ALTITUDE/HEIGHT	1390' / (192)	1730' / (293)	2070' / (399)	2100' / (408)



OCA(H)	A	B	C	D	TRANSITION LEVEL: - FL050 when QNH is 1013 hPa (760mm mercury column) or above; - FL060 when QNH is 977 hPa (733mm mercury column) or above, but less than 1013 hPa (760mm mercury column); - FL070 when QNH is less than 977 hPa (733mm mercury column). NOTE: 1. Turn before MAPt is prohibited. 2. Timing not authorized for defining MAPt.					
Straight-in Approach	1290' (530') (162)	1290' (530') (162)	1290' (530') (162)	1290' (530') (162)						
Circling	1290' (530') (162)	1360' (600') (183)	1740' (970') (299)	1760' (1000') (305)						
GROUND SPEED	km/h	150	180	210	240	270	300	330	360	390
RATE OF DESCENT	m/s	2.2	2.6	3.1	3.5	3.9	4.4	4.8	5.2	5.7
RATE OF DESCENT	ft / min	433	512	610	689	768	866	945	1024	1122

CHANGE: Heading, HGT