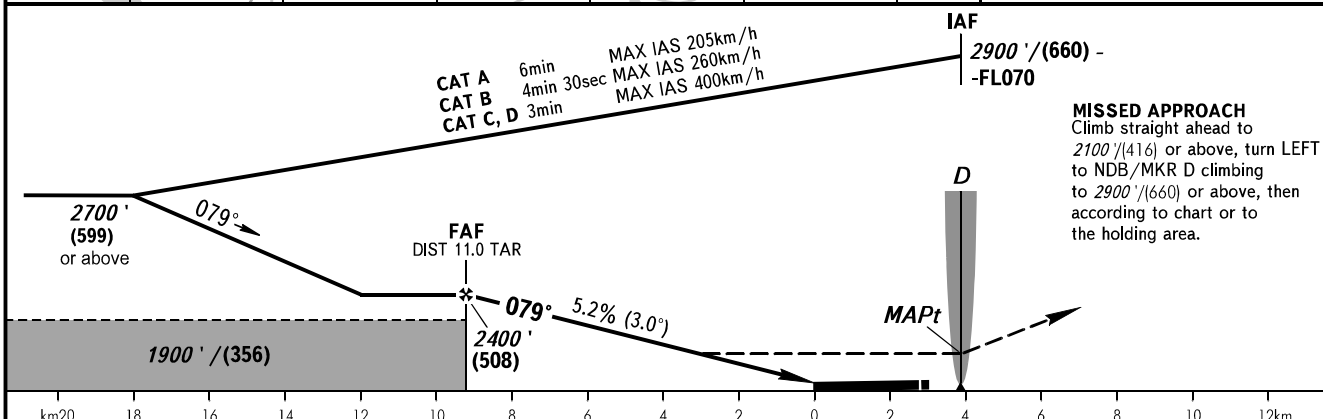
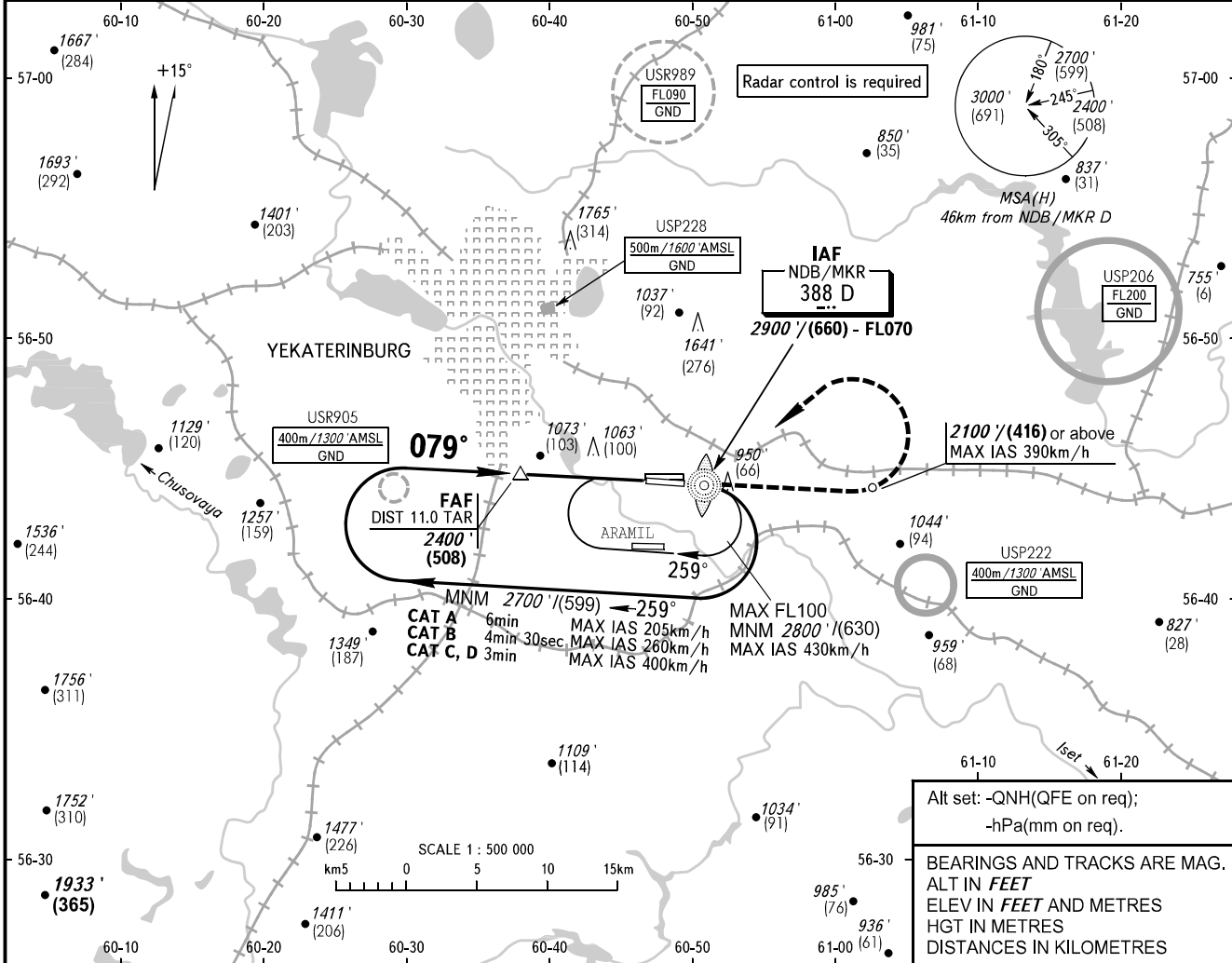


**INSTRUMENT  
APPROACH  
CHART - ICAO**

KOLTSOVO RADAR	118.700
KOLTSOVO START	124.300

**YEKATERINBURG, RUSSIA  
KOLTSOVO  
NDB Z RWY 08R**

TRANSITION LEVEL: <b>1</b>	TRANSITION ALT: <b>4000'</b>	AD ELEV: <b>766' / 234m</b>
	TRANSITION HGT: <b>(1000)</b>	THR ELEV: <b>735' / 224.0m</b>



OCA(H)	A	B	C	D	<b>1</b> TRANSITION LEVEL: - FL050 when QNH is 1013 hPa (760mm mercury column) or above; - FL060 when QNH is 977 hPa (733mm mercury column) or above, but less than 1013 hPa (760mm mercury column); - FL070 when QNH is less than 977 hPa (733mm mercury column). <b>NOTE:</b> 1. Turn before MAPt is prohibited. 2. Timing not authorized for defining MAPt.						
Straight-in Approach	1490' (760') (231)	1490' (760') (231)	1490' (760') (231)	1490' (760') (231)							
Circling	1490' (760') (231)	1490' (760') (231)	1740' (970') (307)	1760' (1000') (313)							
GROUND SPEED	km/h	150	180	210							240
RATE OF DESCENT	m/s		2.2	2.6	3.1	3.5	3.9	4.4	4.8	5.2	5.7
RATE OF DESCENT	ft/min		433	512	610	689	768	866	945	1024	1122