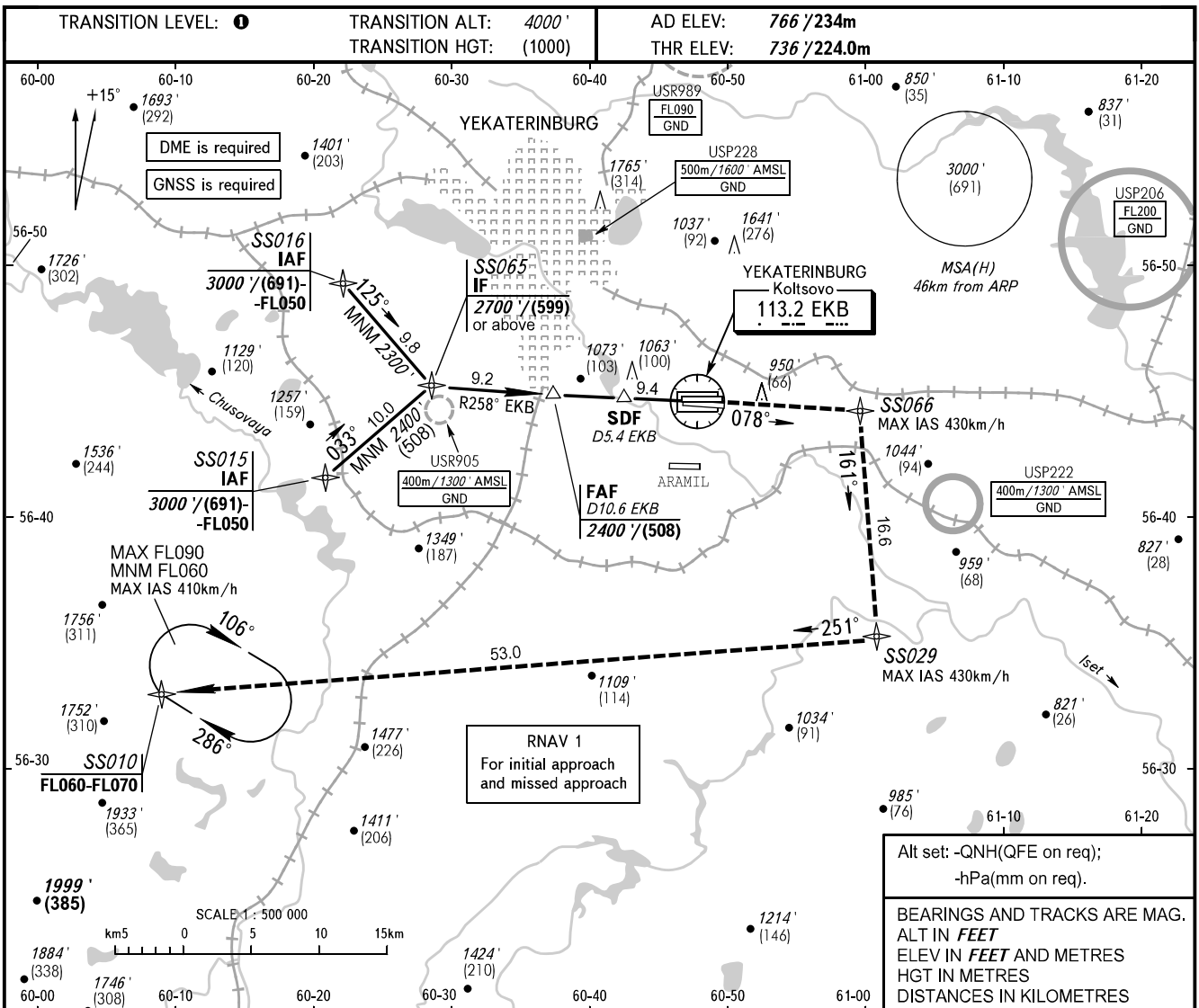


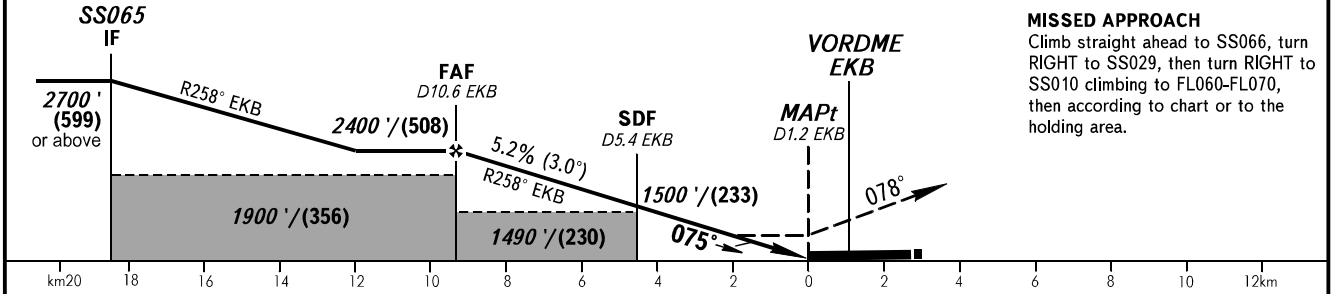
**INSTRUMENT
APPROACH
CHART - ICAO**

KOLTSOVO RADAR **118.700**
KOLTSOVO START **124.300**

YEKATERINBURG, RUSSIA
KOLTSOVO
VOR X RWY 08L



DME EKB	10.6	9.0	7.0	5.0
ALTITUDE/HEIGHT	2400' / (508)	2120' / (422)	1780' / (319)	1440' / (215)



OCA(H)		A	B	C	D						
Straight-in Approach	With SDF	1290' (550') (169)	1290' (550') (169)	1290' (550') (169)	1290' (550') (169)						
	WO SDF	1490' (760') (230)	1490' (760') (230)	1490' (760') (230)	1490' (760') (230)						
Circling		1490' (760') (230)	1490' (760') (230)	1740' (970') (307)	1760' (1000') (313)						
GROUND SPEED		km/h	150	180	210	240	270	300	330	360	390
RATE OF DESCENT		m/s	2.2	2.6	3.1	3.5	3.9	4.3	4.8	5.2	5.7
		ft/min	433	512	610	689	768	866	945	1024	1122

TRANSITION LEVEL:
- FL050 when QNH is 1013 hPa (760mm mercury column) or above;
- FL060 when QNH is 977 hPa (733mm mercury column) or above, but less than 1013 hPa (760mm mercury column);
- FL070 when QNH is less than 977 hPa (733mm mercury column).

NOTE:
1. Final approach track is offset by 3° from the RWY centre line.
2. Timing not authorized for defining MAPt.