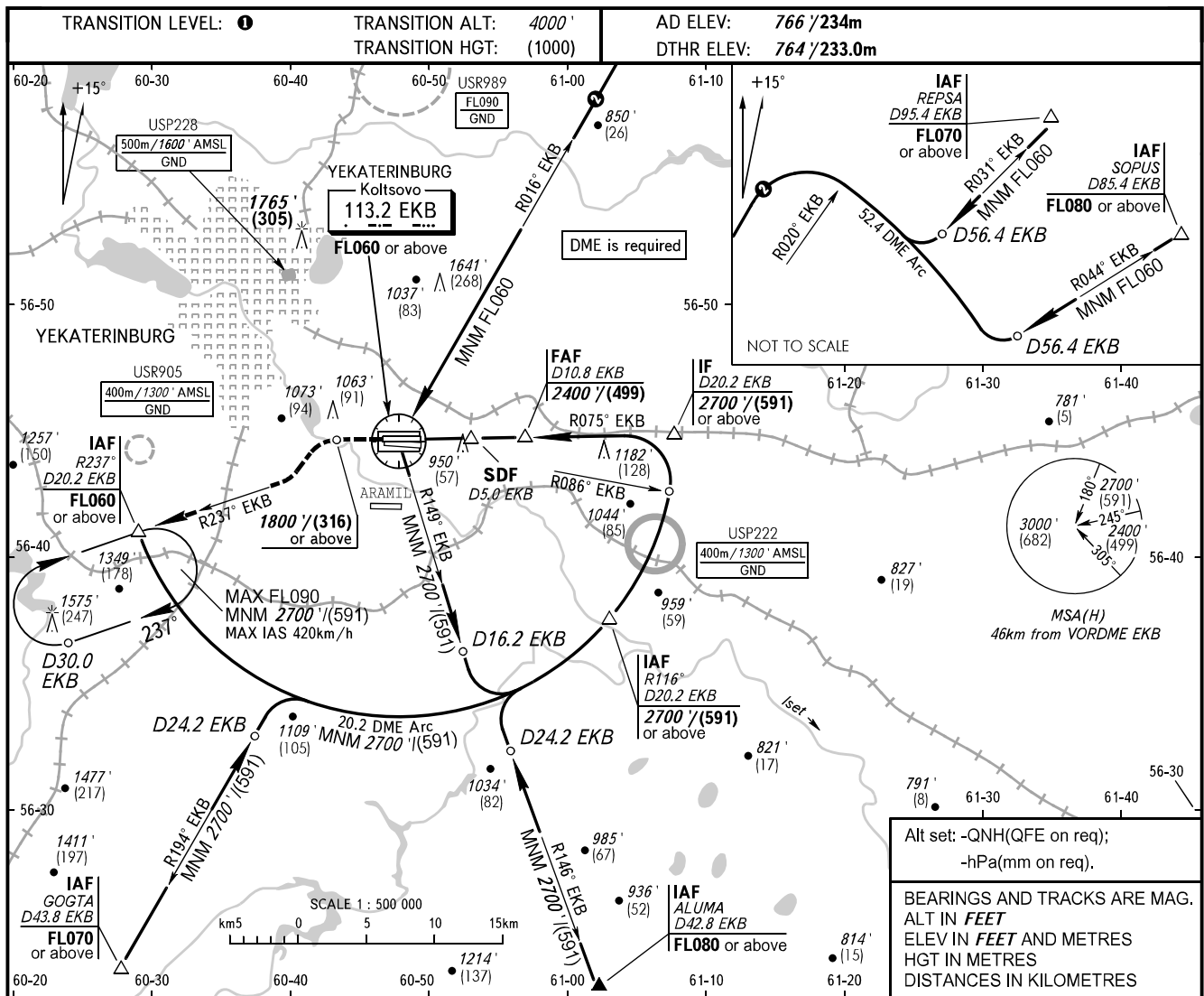


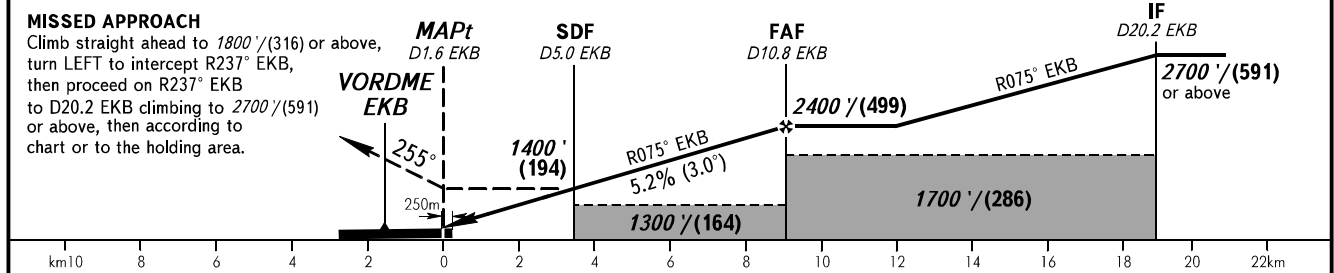
**INSTRUMENT
APPROACH
CHART - ICAO**

KOLTSOVO RADAR **118.700**
KOLTSOVO START **124.300**

YEKATERINBURG, RUSSIA
KOLTSOVO
VOR Z RWY 26R



DME EKB	5.0	7.0	9.0	10.8
ALTITUDE/HEIGHT	1390'/(191)	1740'/(298)	2080'/(402)	2400'/(499)



OCA(H)		A	B	C	D	TRANSITION LEVEL:					
Straight-in Approach	With SDF	1200' (440') (133)	1200' (440') (133)	1200' (440') (133)	1200' (440') (133)	- FL050 when QNH is 1013 hPa (760mm mercury column) or above;					
	WO SDF	1300' (530') (164)	1300' (530') (164)	1300' (530') (164)	1300' (530') (164)	- FL060 when QNH is 977 hPa (733mm mercury column) or above, but less than 1013 hPa (760mm mercury column);					
Circling		1300' (530') (164)	1360' (600') (164)	1740' (970') (298)	1760' (1000') (304)	- FL070 when QNH is less than 977 hPa (733mm mercury column).					
GROUND SPEED		km/h	150	180	210	240	270	300	330	360	390
RATE OF DESCENT		m/s	2.2	2.6	3.1	3.5	3.9	4.4	4.8	5.2	5.7
		ft/min	433	512	610	689	768	866	945	1024	1122