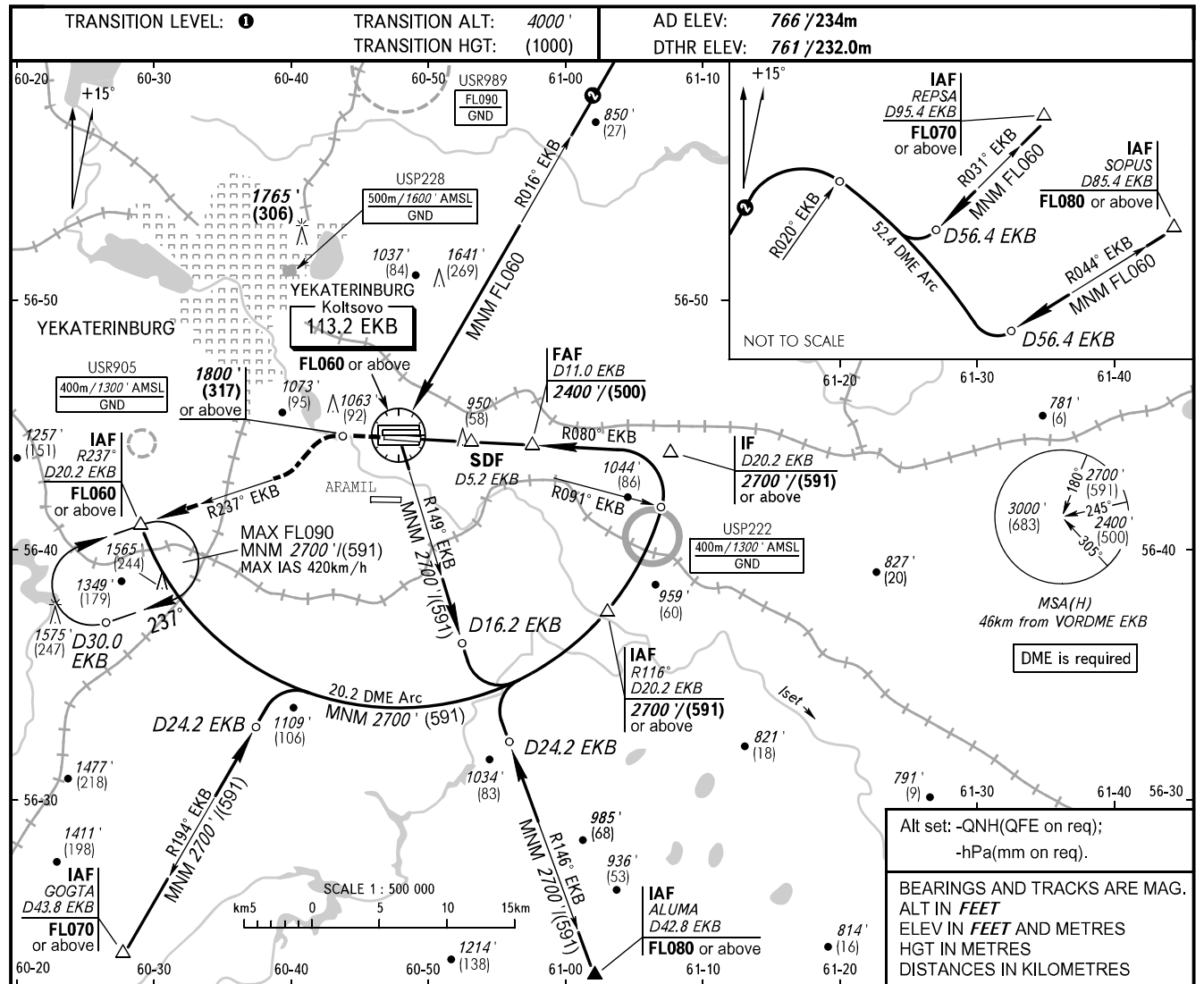


**INSTRUMENT
APPROACH
CHART - ICAO**

KOLTSOVO RADAR **118.700**
KOLTSOVO START **124.300**

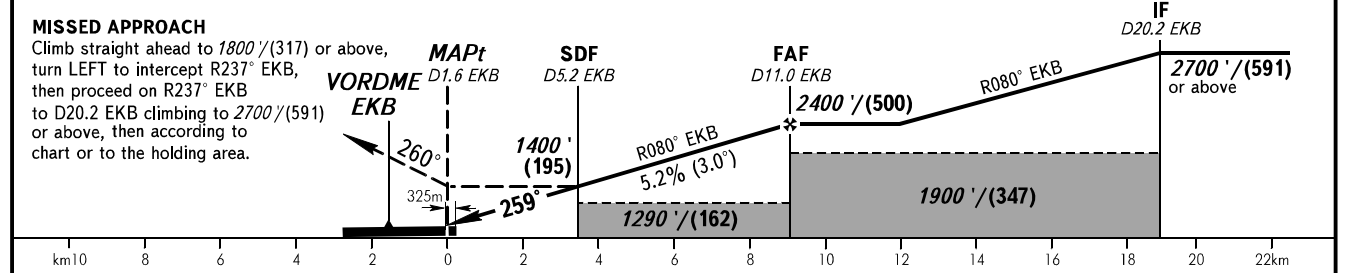
YEKATERINBURG, RUSSIA
KOLTSOVO
VOR Z RWY 26L



Alt set: -QNH(QFE on req);
-hPa(mm on req).

BEARINGS AND TRACKS ARE MAG.
ALT IN FEET
ELEV IN FEET AND METRES
HGT IN METRES
DISTANCES IN KILOMETRES

DME EKB	5.0	7.0	9.0	11.0
ALTITUDE/HEIGHT	1380'/(189)	1720'/(293)	2070'/(399)	2400'/(500)



OCA(H)		A	B	C	D
Straight-in Approach	With SDF	1200' (440') (134)	1200' (440') (134)	1200' (440') (134)	1200' (440') (134)
	WO SDF	1290' (530') (162)	1290' (530') (162)	1290' (530') (162)	1290' (530') (162)
Circling		1290' (530') (162)	1360' (600') (183)	1740' (970') (299)	1760' (1000') (305)

1 TRANSITION LEVEL:
- FL050 when QNH is 1013 hPa (760mm mercury column) or above;
- FL060 when QNH is 977 hPa (733mm mercury column) or above, but less than 1013 hPa (760mm mercury column);
- FL070 when QNH is less than 977 hPa (733mm mercury column).

WARNING:
1. Final approach track is offset by 1° from the RWY centre line.
2. Turn before MAPt is PROHIBITED.
3. Timing not authorized for defining MAPt.

GROUND SPEED	km/h	150	180	210	240	270	300	330	360	390
RATE OF DESCENT	m/s	2.2	2.6	3.1	3.5	3.9	4.4	4.8	5.2	5.7
	ft/min	433	512	610	689	768	866	945	1024	1122