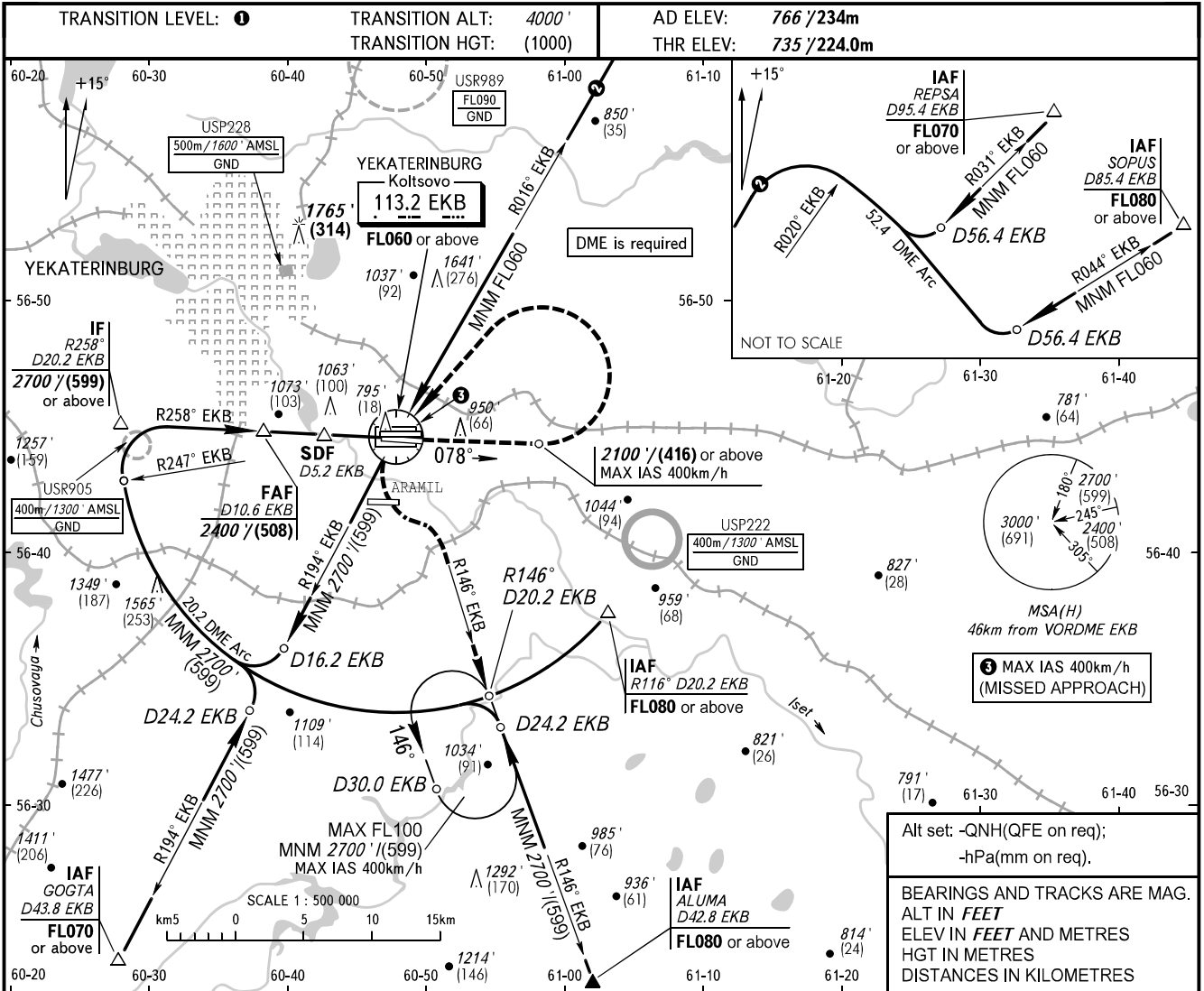


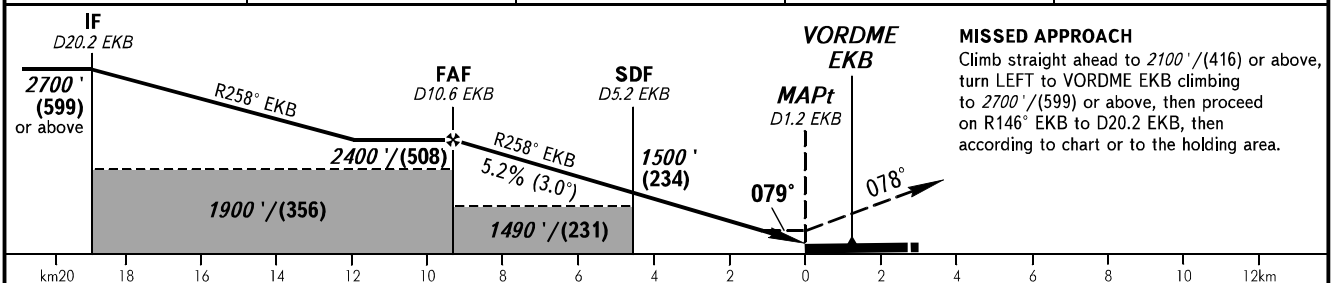
**INSTRUMENT
APPROACH
CHART - ICAO**

KOLTSOVO RADAR **118.700**
KOLTSOVO START **124.300**

YEKATERINBURG, RUSSIA
KOLTSOVO
VOR Z RWY 08R



DME EKB	10.6	9.0	7.0	5.0
ALTITUDE/HEIGHT	2400' / (508)	2140' / (429)	1800' / (325)	1460' / (221)



OCA(H)		A	B	C	D
Straight-in Approach	With SDF	1290' (550') (170)	1290' (550') (170)	1290' (550') (170)	1290' (550') (170)
	WO SDF	1490' (760') (231)	1490' (760') (231)	1490' (760') (231)	1490' (760') (231)
Circling		1490' (760') (231)	1490' (760') (231)	1740' (970') (307)	1760' (1000') (313)

TRANSITION LEVEL:
- FLO50 when QNH is 1013 hPa (760mm mercury column) or above;
- FLO60 when QNH is 977 hPa (733mm mercury column) or above, but less than 1013 hPa (760mm mercury column);
- FLO70 when QNH is less than 977 hPa (733mm mercury column).

WARNING:
1. Final approach track is offset by 1° from the RWY centre line.
2. Turn before MAPt is PROHIBITED.
3. Timing not authorized for defining MAPt.

GROUND SPEED	km/h	150	180	210	240	270	300	330	360	390
RATE OF DESCENT	m/s	2.2	2.6	3.1	3.5	3.9	4.4	4.8	5.2	5.7
	ft/min	433	512	610	689	768	866	945	1024	1122

CHANGE: NIL