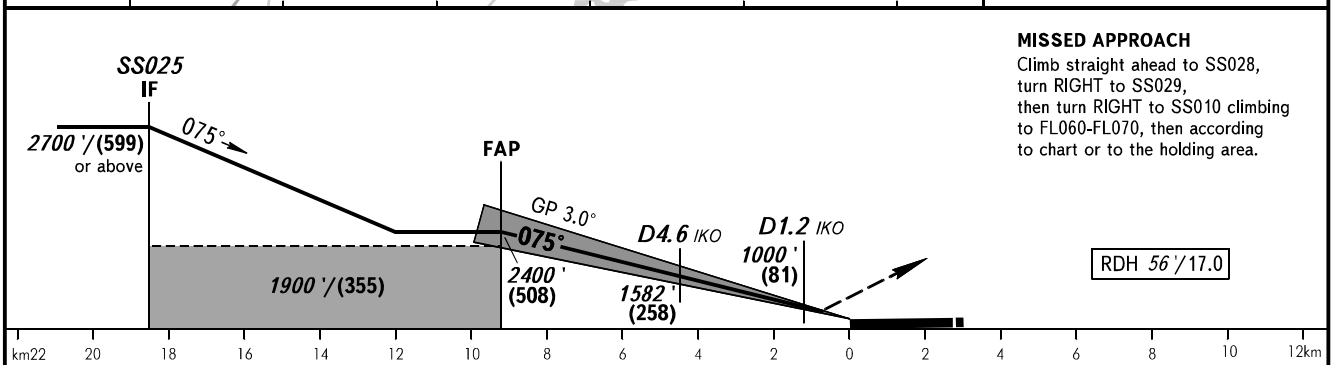
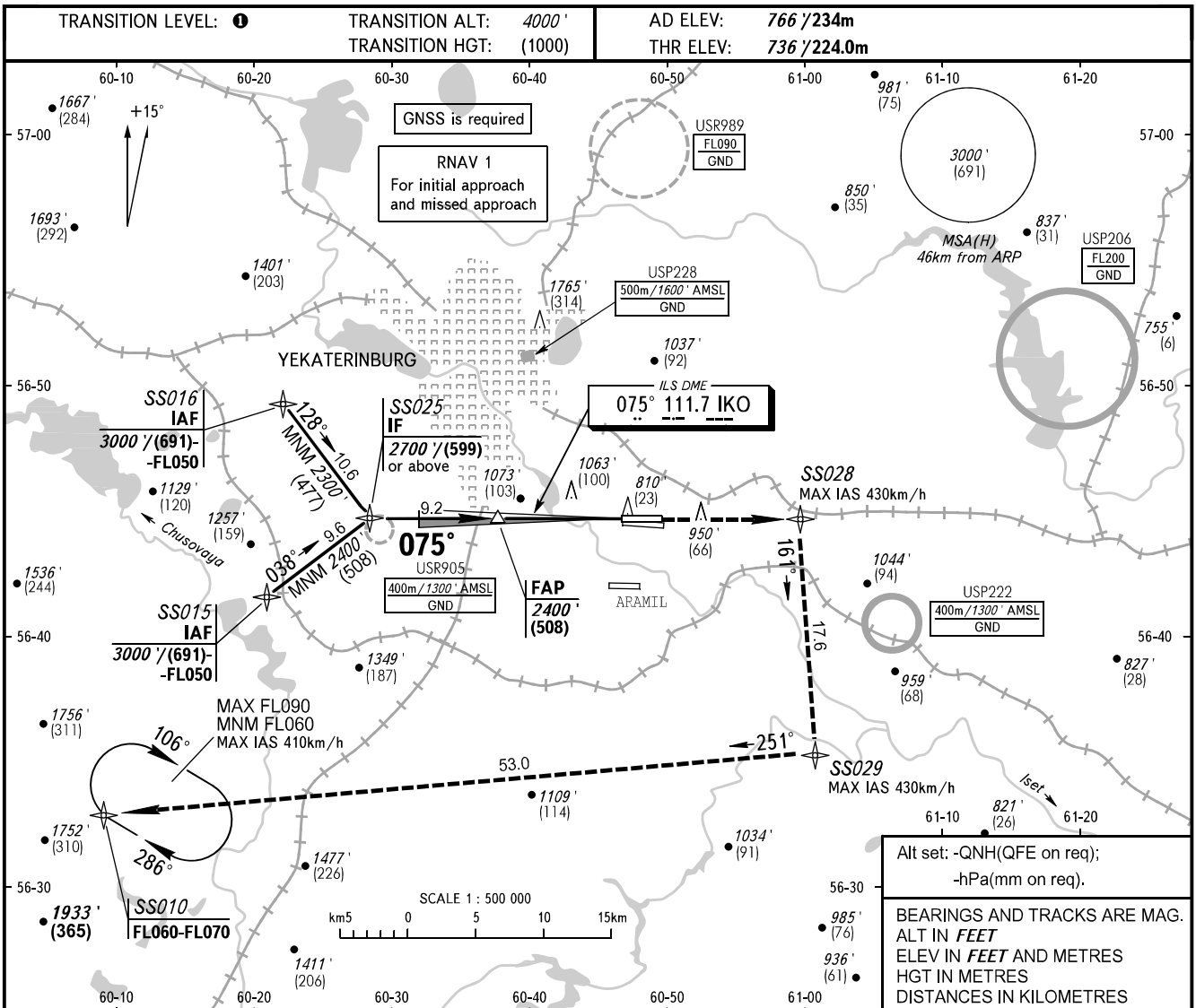


**INSTRUMENT
APPROACH
CHART - ICAO**

KOLTSOVO RADAR **118.700**
KOLTSOVO START **124.300**

YEKATERINBURG, RUSSIA
KOLTSOVO
ILS W CAT I RWY 08L



OCA(H)		A	B	C	D	DL						
Straight-in Approach	CAT I	876' (141')	888' (153')	899' (164')	914' (179')	918' (183')						
		(43)	(47)	(50)	(55)	(56)						
Circling		1250' (480') (157)	1360' (600') (191)	1740' (970') (307)	1760' (1000') (313)	1760' (1000') (313)						
GROUND SPEED		km/h		150	180	210	240	270	300	330	360	390
RATE OF DESCENT		m/s		2.2	2.6	3.1	3.5	3.9	4.4	4.8	5.2	5.7
		ft/min		433	512	610	689	768	866	945	1024	1122

1 **TRANSITION LEVEL:**
- FL050 when QNH is 1013 hPa (760mm mercury column) or above;
- FL060 when QNH is 977 hPa (733mm mercury column) or above, but less than 1013 hPa (760mm mercury column);
- FL070 when QNH is less than 977 hPa (733mm mercury column).

NOTE
DME IKO reads zero at RWY 08L THR.

CHANGE: Missed approach