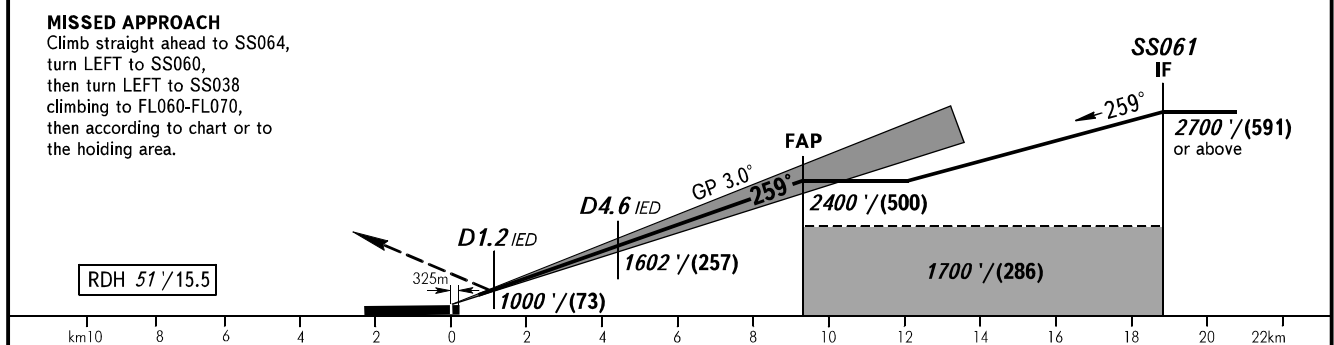
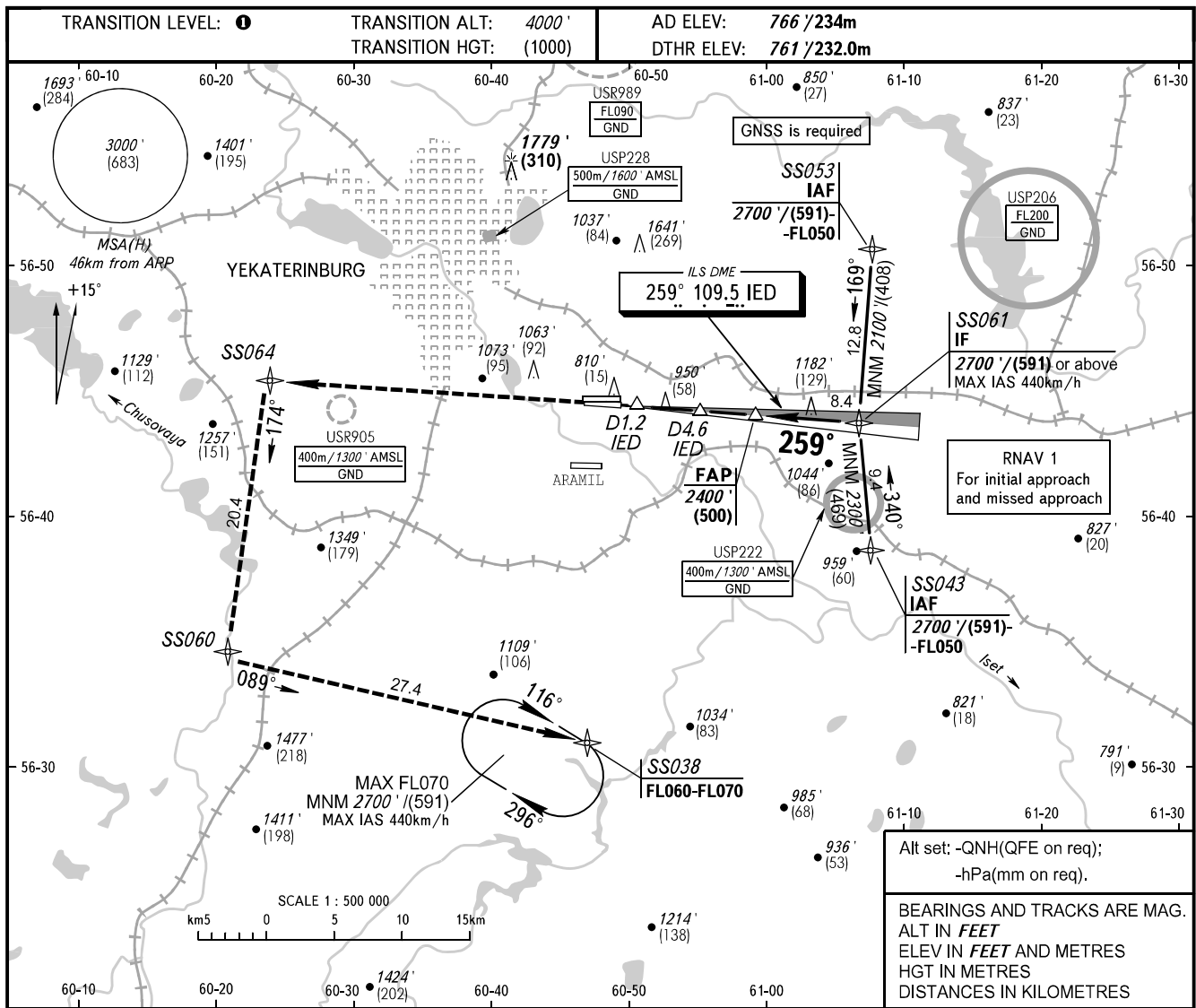


**INSTRUMENT  
APPROACH  
CHART - ICAO**

KOLTSOVO RADAR **118.700**  
KOLTSOVO START **124.300**

**YEKATERINBURG, RUSSIA**  
KOLTSOVO  
ILS W CAT I/II RWY 26L



OCA(H)		A	B	C	D	DL
Straight-in Approach	<b>CAT I</b>	903' (142') (44)	914' (153') (47)	926' (165') (52)	940' (179') (55)	943' (182') (56)
	<b>CAT II</b>	(49')	(60')	(73')	(87')	(93')
Circling		1250' (480') (149)	1360' (600') (183)	1740' (970') (299)	1760' (1000') (305)	1760' (1000') (305)

**TRANSITION LEVEL:**  
- FL050 when QNH is 1013 hPa (760mm mercury column) or above;  
- FL060 when QNH is 977 hPa (733mm mercury column) or above, but less than 1013 hPa (760mm mercury column);  
- FL070 when QNH is less than 977 hPa (733mm mercury column).

**NOTE**  
DME IED reads zero at RWY 26L DTHR.

GROUND SPEED	km/h	150	180	210	240	270	300	330	360	390
		RATE OF DESCENT	m/s	2.2	2.6	3.1	3.5	3.9	4.4	4.8
	ft/min	433	512	610	689	768	866	945	1024	1122