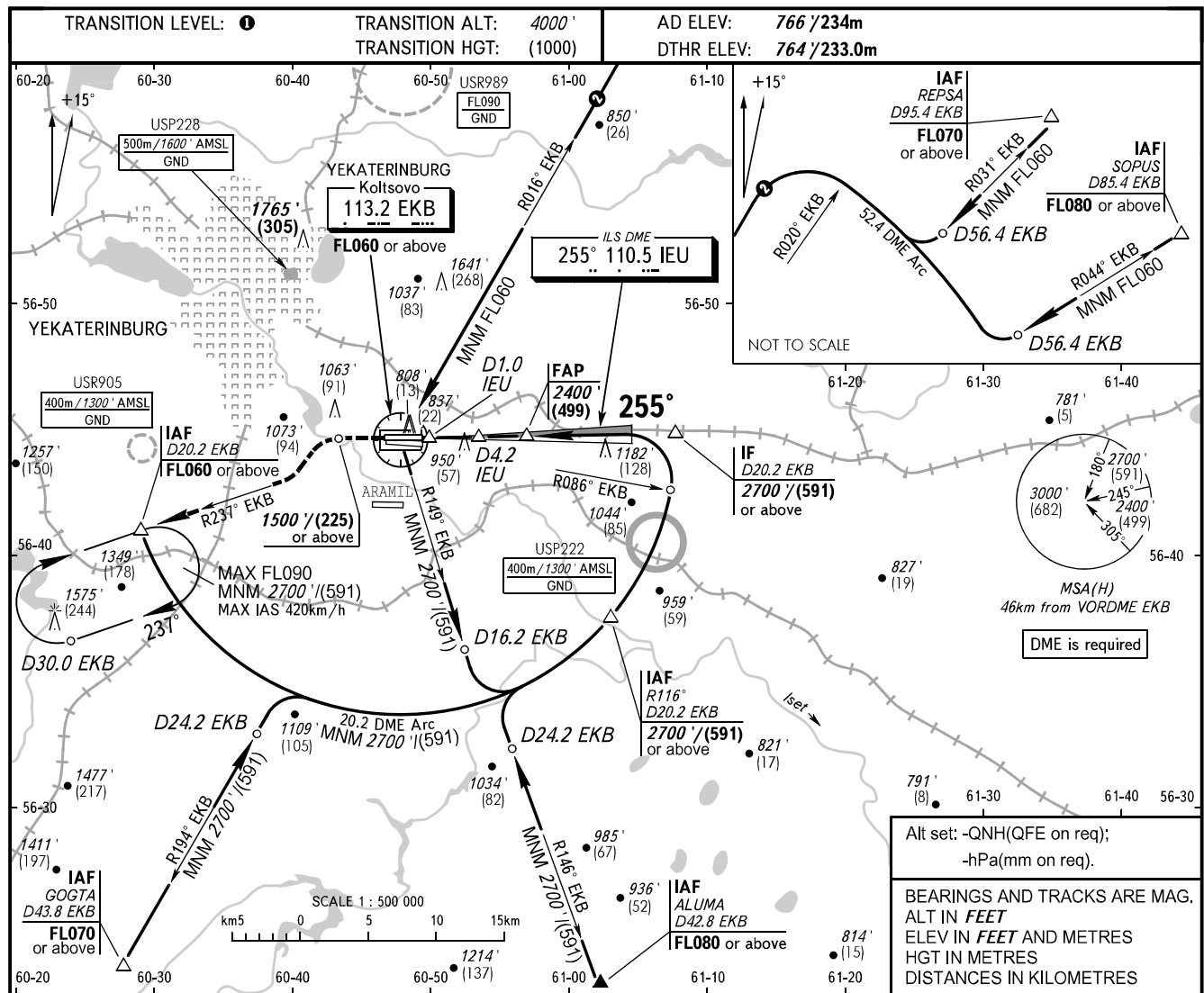


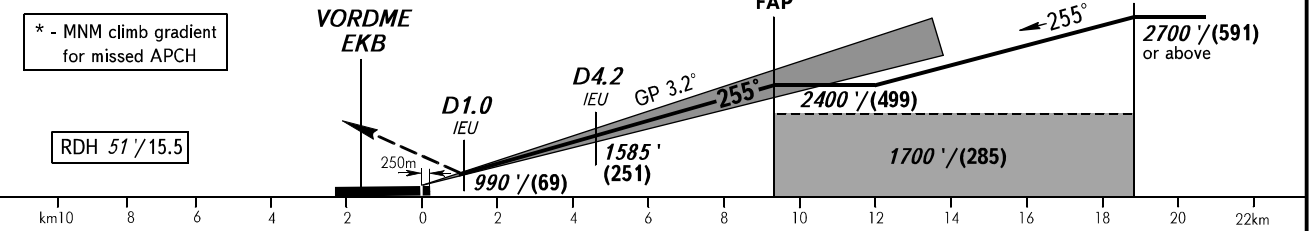
**INSTRUMENT
APPROACH
CHART - ICAO**

KOLTSOVO RADAR **118.700**
KOLTSOVO START **124.300**

YEKATERINBURG, RUSSIA
KOLTSOVO
ILS X CAT I RWY 26R



MISSED APPROACH
 Climb straight ahead to 1500'/(225) or above,
 turn LEFT to intercept R237° EKB,
 then proceed on R237° EKB
 to D20.2 EKB climbing to 2700'/(591) or above,
 then according to chart or to the holding area.



OCA(H)		A	B	C	D	DL					
Straight-in Approach	CAT I	3.0%*	902' (138') (43)	910' (146') (45)	921' (157') (48)	933' (170') (52)	940' (176') (54)				
		2.5%*	995' (232') (71)	1007' (224') (75)	1015' (252') (77)	1026' (263') (80)	1026' (263') (80)				
Circling		1250' (480') (149)	1360' (600') (182)	1740' (970') (298)	1760' (1000') (304)	1760' (1000') (304)					
GROUND SPEED		km/h	150	180	210	240	270	300	330	360	390
RATE OF DESCENT		m/s	2.4	2.9	3.4	3.9	4.4	4.8	5.3	5.8	6.3
		ft/min	472	571	669	768	866	945	1044	1142	1240

TRANSITION LEVEL:
 - FL050 when QNH is 1013 hPa (760mm mercury column) or above;
 - FL060 when QNH is 977 hPa (733mm mercury column) or above, but less than 1013 hPa (760mm mercury column);
 - FL070 when QNH is less than 977 hPa (733mm mercury column).
NOTE: DME IEU reads zero at RWY 26R DTHR.

CHANGE: Heading: HGT