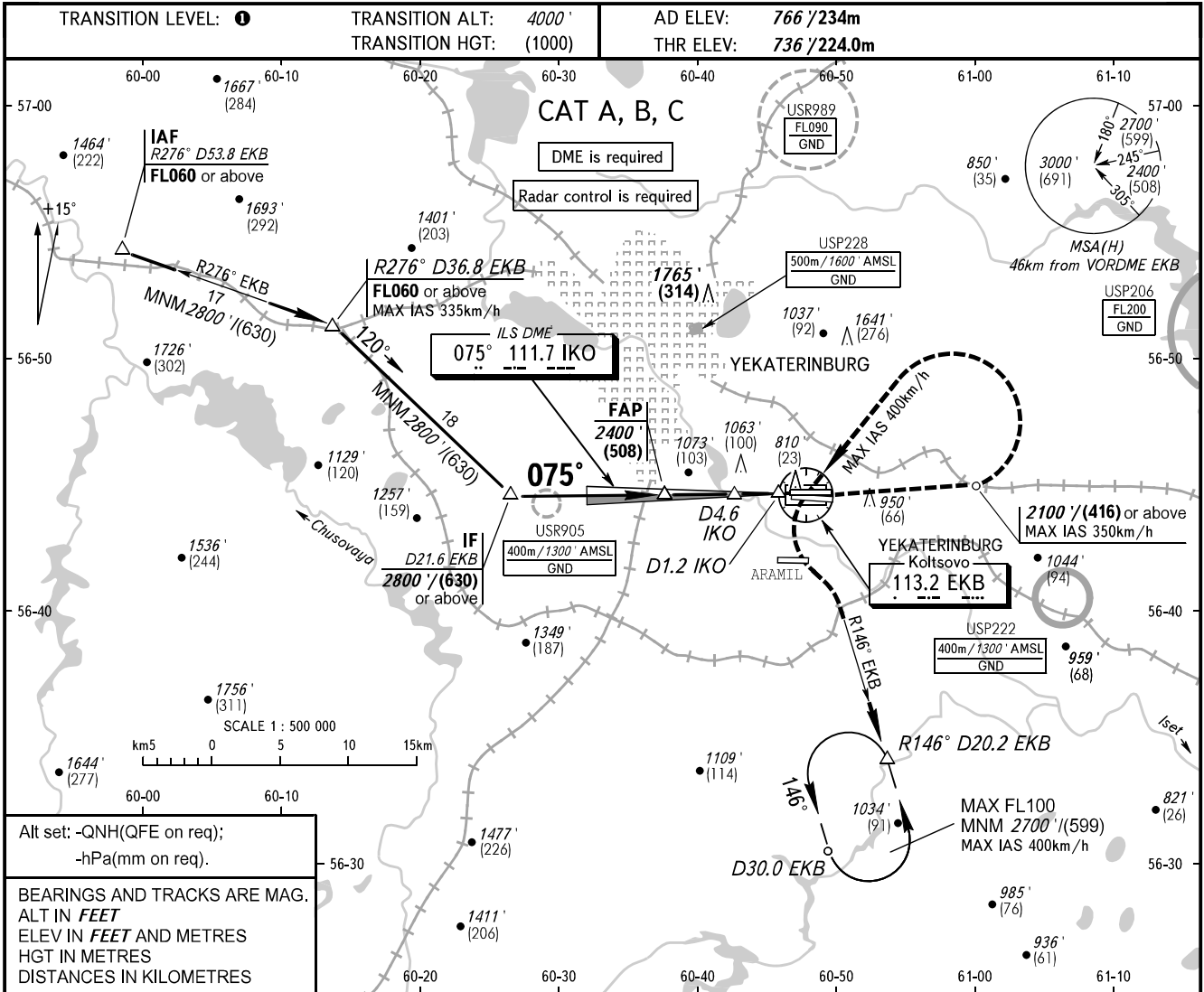


**INSTRUMENT  
APPROACH  
CHART - ICAO**

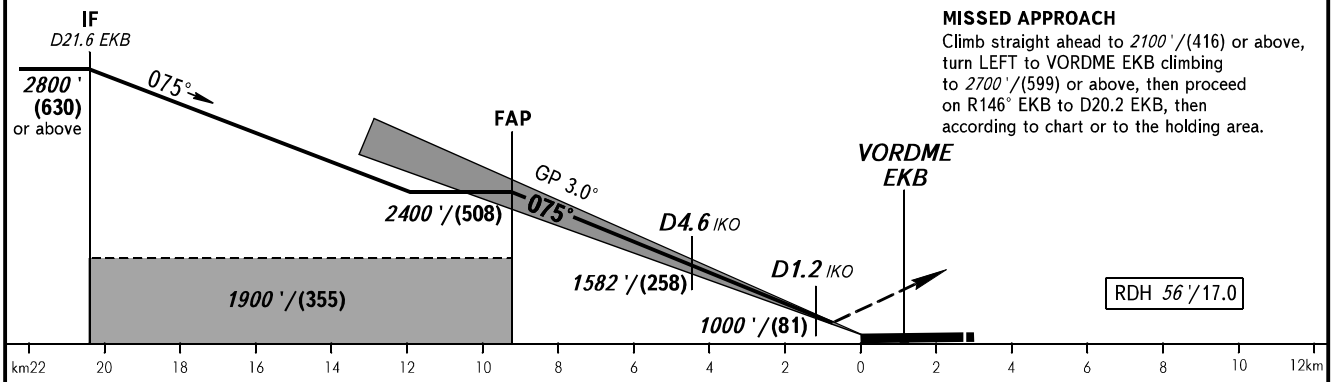
KOLTSOVO RADAR 118.700  
KOLTSOVO START 124.300

**YEKATERINBURG, RUSSIA  
KOLTSOVO  
ILS X CAT I RWY 08L**



Alt set: -QNH(QFE on req);  
-hPa(mm on req).

BEARINGS AND TRACKS ARE MAG.  
ALT IN FEET  
ELEV IN FEET AND METRES  
HGT IN METRES  
DISTANCES IN KILOMETRES



**MISSED APPROACH**  
Climb straight ahead to 2100' (416) or above, turn LEFT to VORDME EKB climbing to 2700' (599) or above, then proceed on R146° EKB to D20.2 EKB, then according to chart or to the holding area.

OCA(H)	A	B	C
Straight-in Approach	876' (141') (43)	888' (153') (47)	899' (164') (50)
Circling	1250' (480') (157)	1360' (600') (191)	1740' (970') (307)

**1** TRANSITION LEVEL:  
- FL050 when QNH is 1013 hPa (760mm mercury column) or above;  
- FL060 when QNH is 977 hPa (733mm mercury column) or above, but less than 1013 hPa (760mm mercury column);  
- FL070 when QNH is less than 977 hPa (733mm mercury column).

**NOTE**  
DME IKO reads zero at RWY 08L THR.

GROUND SPEED	km/h	150	180	210	240	270	300	330	360	390
RATE OF DESCENT	m/s	2.2	2.6	3.1	3.5	3.9	4.4	4.8	5.2	5.7
	ft/min	433	512	610	689	768	866	945	1024	1122