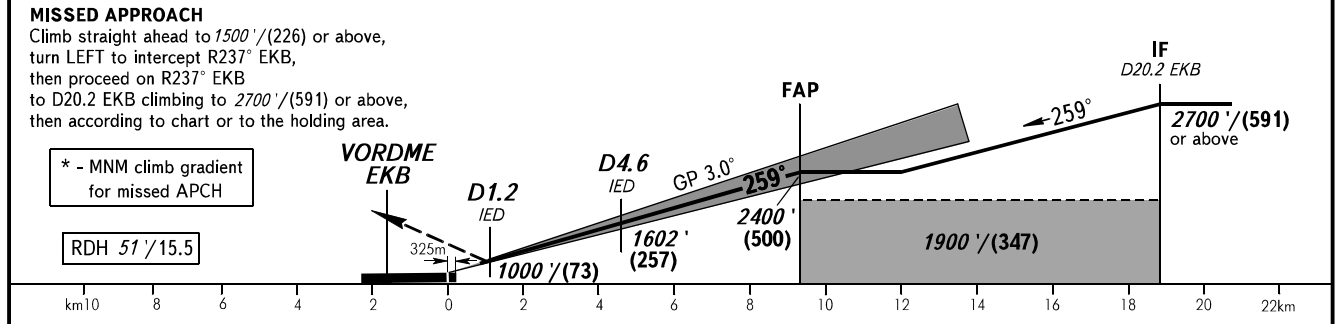
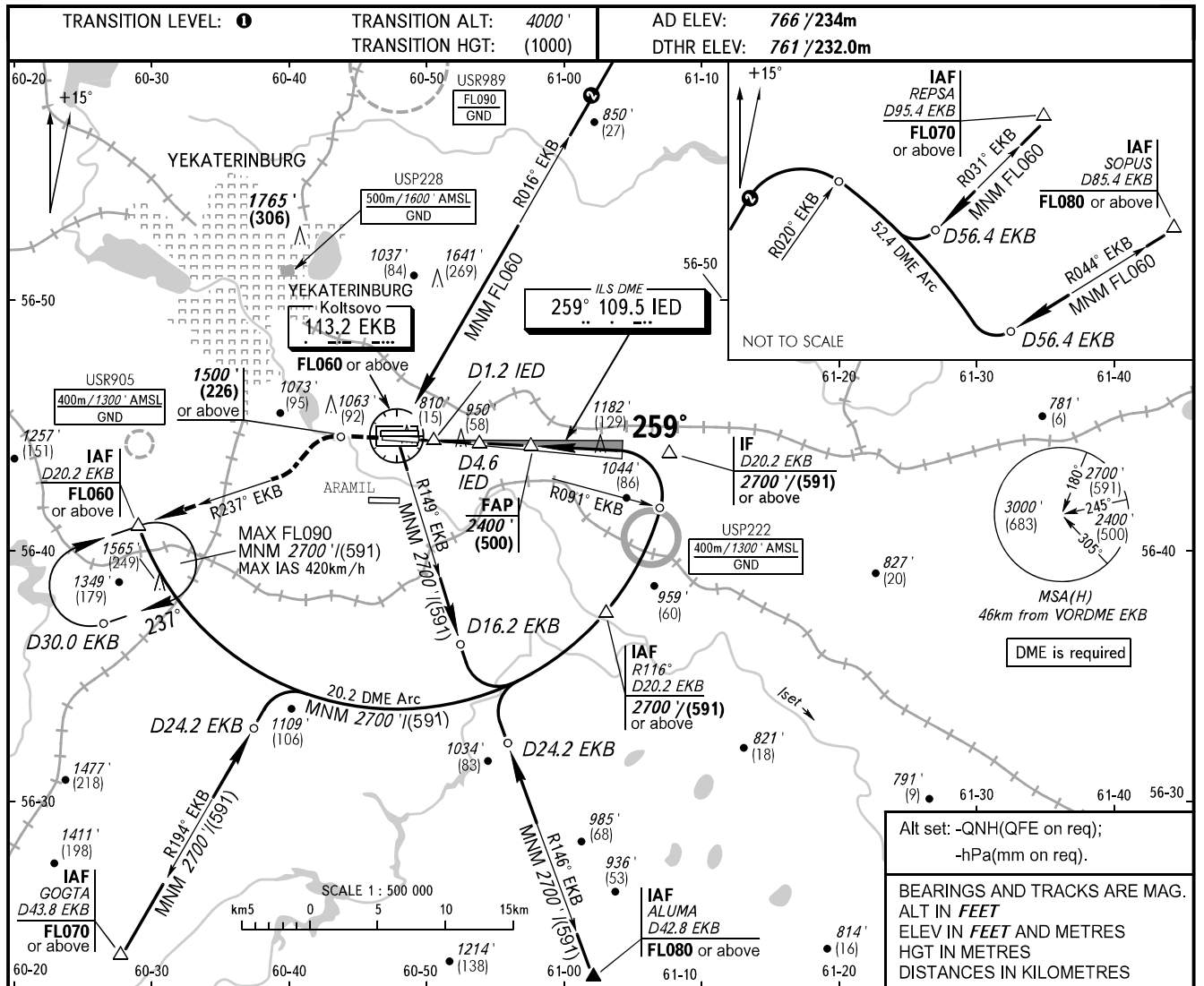


**INSTRUMENT
APPROACH
CHART - ICAO**

KOLTSOVO RADAR 118.700
KOLTSOVO START 124.300

**YEKATERINBURG, RUSSIA
KOLTSOVO
ILS X CAT I/II RWY 26L**



OCA(H)		A	B	C	D	DL	
Straight-in Approach	CAT I	3.0%*	903' (142') (44)	914' (153') (47)	926' (165') (51)	940' (179') (55)	943' (182') (56)
		2.5%*	980' (219') (67)	992' (231') (71)	1000' (239') (73)	1011' (250') (77)	1011' (250') (77)
	CAT II	3.0%*	(49')	(60')	(73')	(87')	(93')
		2.5%*	(131')	(148')	(160')	(174')	(174')
Circling		1250' (480') (149)	1360' (600') (183)	1740' (970') (299)	1760' (1000') (305)	1760' (1000') (305)	

- TRANSITION LEVEL:**
- FL050 when QNH is 1013 hPa (760mm mercury column) or above;
 - FL060 when QNH is 977 hPa (733mm mercury column) or above, but less than 1013 hPa (760mm mercury column);
 - FL070 when QNH is less than 977 hPa (733mm mercury column).
- NOTE**
DME IED reads zero at RWY 26L DTHR.

GROUND SPEED	km/h	150	180	210	240	270	300	330	360	390
RATE OF DESCENT	m/s	2.2	2.6	3.1	3.5	3.9	4.4	4.8	5.2	5.7
	ft/min	433	512	610	689	768	866	945	1024	1122