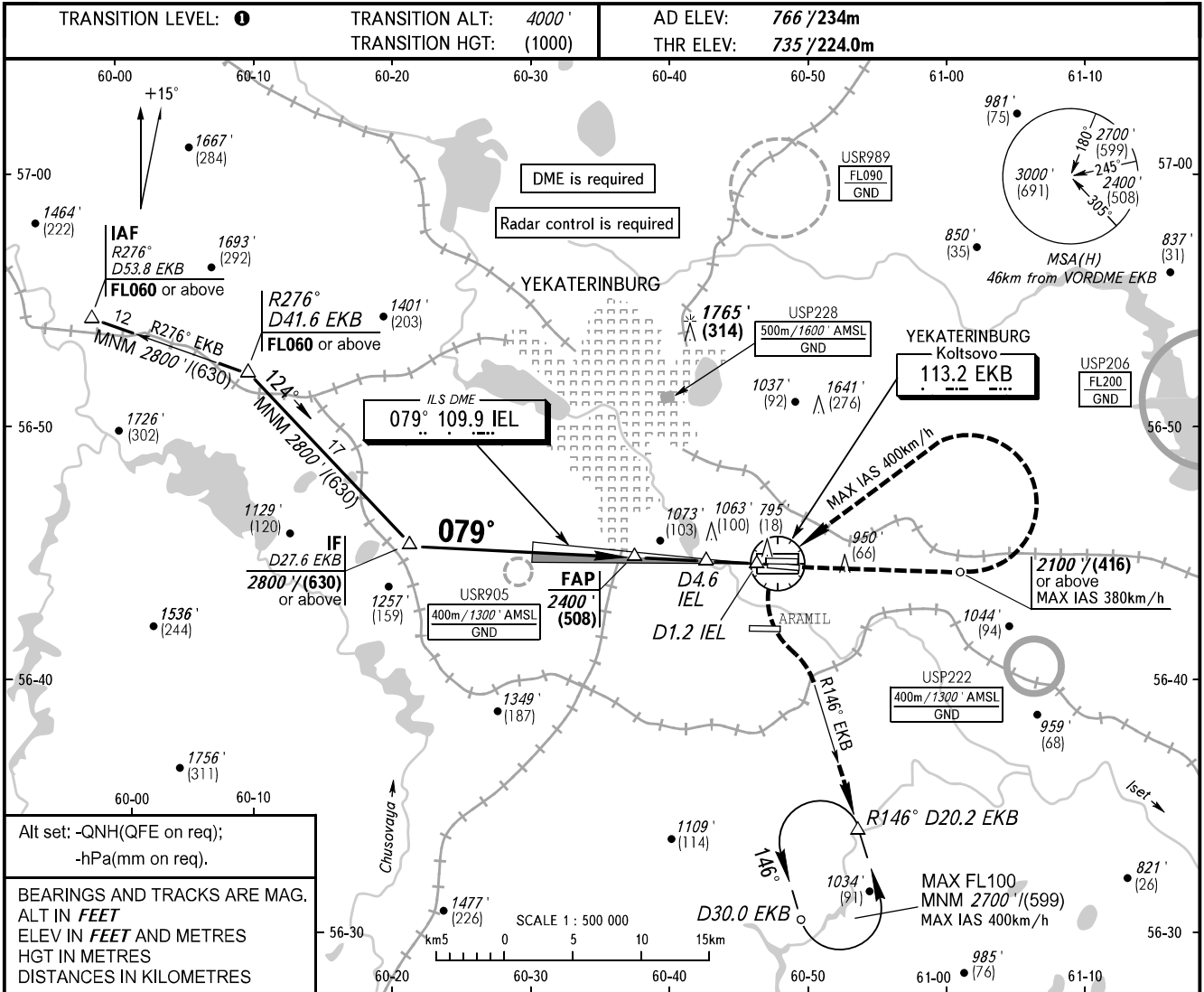


**INSTRUMENT  
APPROACH  
CHART - ICAO**

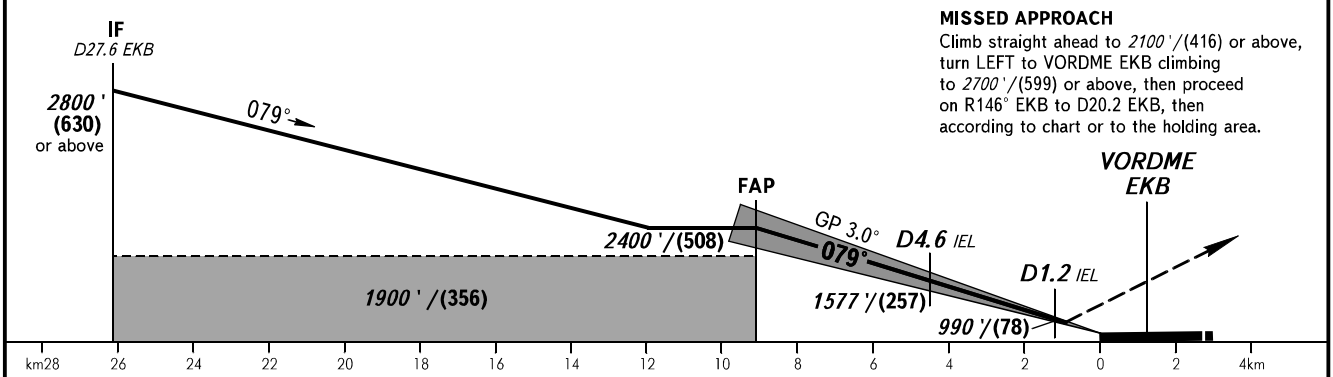
KOLTSOVO RADAR **118.700**  
KOLTSOVO START **124.300**

**YEKATERINBURG, RUSSIA**  
KOLTSOVO  
ILS X CAT I RWY 08R



Alt set: -QNH(QFE on req);  
-hPa(mm on req).

BEARINGS AND TRACKS ARE MAG.  
ALT IN **FEET**  
ELEV IN **FEET** AND METRES  
HGT IN METRES  
DISTANCES IN KILOMETRES



| OCA(H)               | A                  | B                | C                  | D                  | DL                  | ① TRANSITION LEVEL: |   |     |     |      |      |
|----------------------|--------------------|------------------|--------------------|--------------------|---------------------|---------------------|---|-----|-----|------|------|
| Straight-in Approach | CAT I              | 883' (148') (46) | 895' (160') (49)   | 909' (174') (53)   | 924' (189') (58)    | 927' (192') (59)    | - FL050 when QNH is 1013 hPa (760mm mercury column) or above;   |     |     |      |      |
|                      |                    |                  |                    |                    |                     |                     | - FL060 when QNH is 977 hPa (733mm mercury column) or above, but less than 1013 hPa (760mm mercury column); |     |     |      |      |
| Circling             | 1250' (480') (157) |                  | 1360' (600') (191) | 1740' (970') (307) | 1760' (1000') (313) | 1760' (1000') (313) | - FL070 when QNH is less than 977 hPa (733mm mercury column).   |     |     |      |      |
|                      |                    |                  |                    |                    |                     |                     | <b>NOTE</b><br>DME IEL reads zero at RWY 08R THR.   |     |     |      |      |
| GROUND SPEED         | km/h               |                  | 150                | 180                | 210                 | 240                 | 270   | 300 | 330 | 360  | 390  |
| RATE OF DESCENT      | m/s                |                  | 2.2                | 2.6                | 3.1                 | 3.5                 | 3.9   | 4.4 | 4.8 | 5.2  | 5.7  |
|                      | ft/min             |                  | 433                | 512                | 610                 | 689                 | 768   | 866 | 945 | 1024 | 1122 |