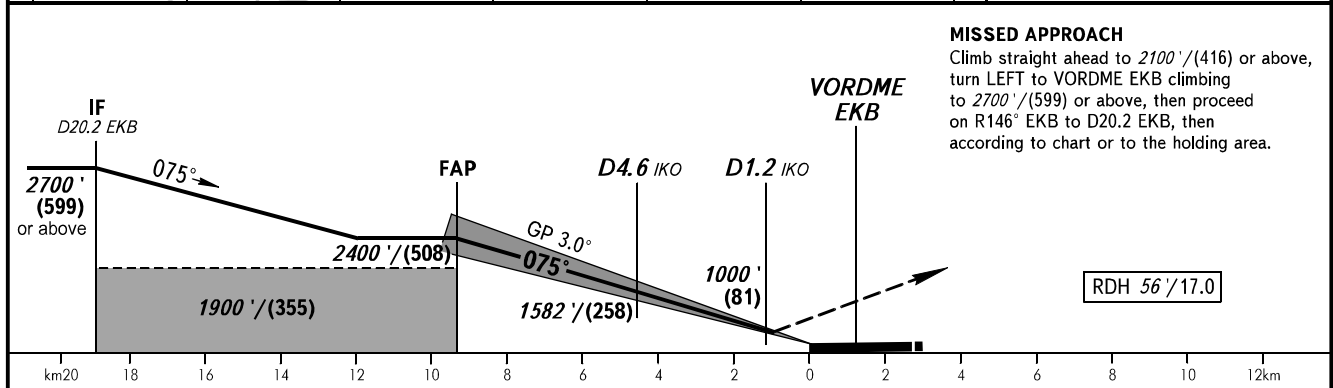
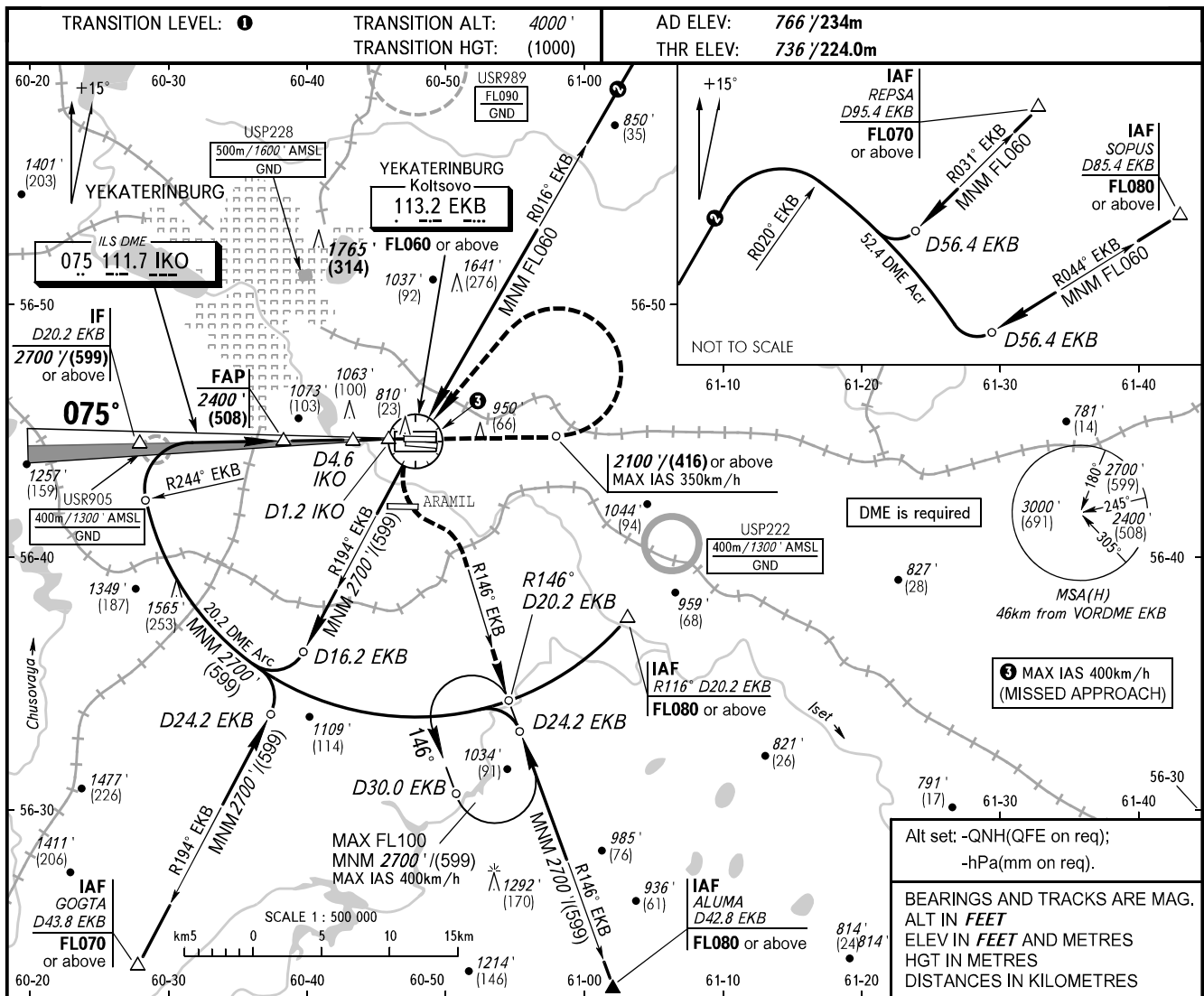


**INSTRUMENT
APPROACH
CHART - ICAO**

KOLTSOVO RADAR **118.700**
KOLTSOVO START **124.300**

YEKATERINBURG, RUSSIA
KOLTSOVO
ILS Y CAT I RWY 08L



MISSED APPROACH
Climb straight ahead to 2100' / (416) or above, turn LEFT to VORDME EKB climbing to 2700' / (599) or above, then proceed on R146° EKB to D20.2 EKB, then according to chart or to the holding area.

OCA(H)	A	B	C	D	DL					
Straight-in Approach	876' (141') (43)	888' (153') (47)	899' (164') (50)	914' (179') (55)	918' (183') (56)					
Circling	1250' (480') (157)	1360' (600') (191)	1740' (970') (307)	1760' (1000') (313)	1760' (1000') (313)					
GROUND SPEED	km/h	150	180	210	240	270	300	330	360	390
RATE OF DESCENT	m/s	2.2	2.6	3.1	3.5	3.9	4.4	4.8	5.2	5.7
	ft/min	433	512	610	689	768	866	945	1024	1122

TRANSITION LEVEL:
 - FL050 when QNH is 1013 hPa (760mm mercury column) or above;
 - FL060 when QNH is 977 hPa (733mm mercury column) or above, but less than 1013 hPa (760mm mercury column);
 - FL070 when QNH is less than 977 hPa (733mm mercury column).
NOTE
 DME IKO reads zero at RWY 08L THR.