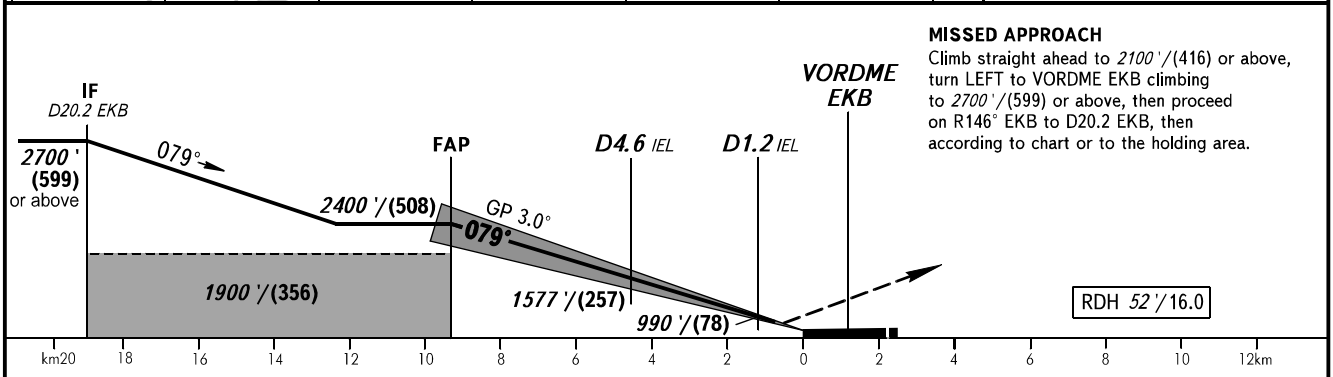
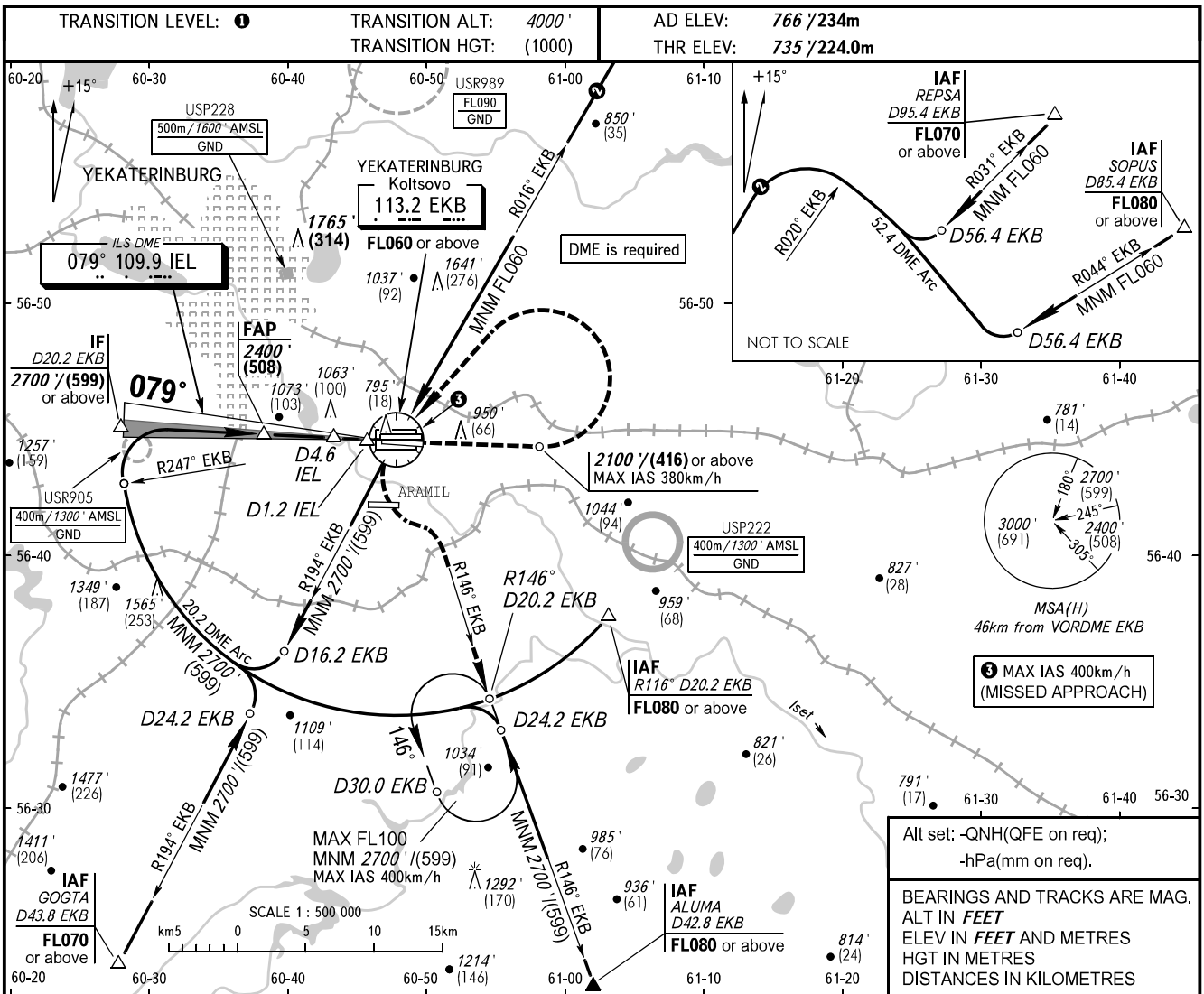


**INSTRUMENT
APPROACH
CHART - ICAO**

KOLTSOVO RADAR **118.700**
KOLTSOVO START **124.300**

YEKATERINBURG, RUSSIA
KOLTSOVO
ILS Y CAT I RWY 08R



OCA(H)		A	B	C	D	DL	1 TRANSITION LEVEL: - FL050 when QNH is 1013 hPa (760mm mercury column) or above; - FL060 when QNH is 977 hPa (733mm mercury column) or above, but less than 1013 hPa (760mm mercury column); - FL070 when QNH is less than 977 hPa (733mm mercury column). NOTE DME IEL reads zero at RWY 08R THR.				
Straight-in Approach	CAT I	883' (148') (46)	895' (160') (49)	909' (174') (53)	924' (189') (58)	927' (192') (59)					
		1250' (480') (157)	1360' (600') (191)	1740' (970') (307)	1760' (1000') (313)	1760' (1000') (313)					
GROUND SPEED		km/h	150	180	210	240		270	300	330	360
RATE OF DESCENT		m/s	2.2	2.6	3.1	3.5	3.9	4.4	4.8	5.2	5.7
		ft/min	433	512	610	689	768	866	945	1024	1122

CHANGE: Heading, HGT