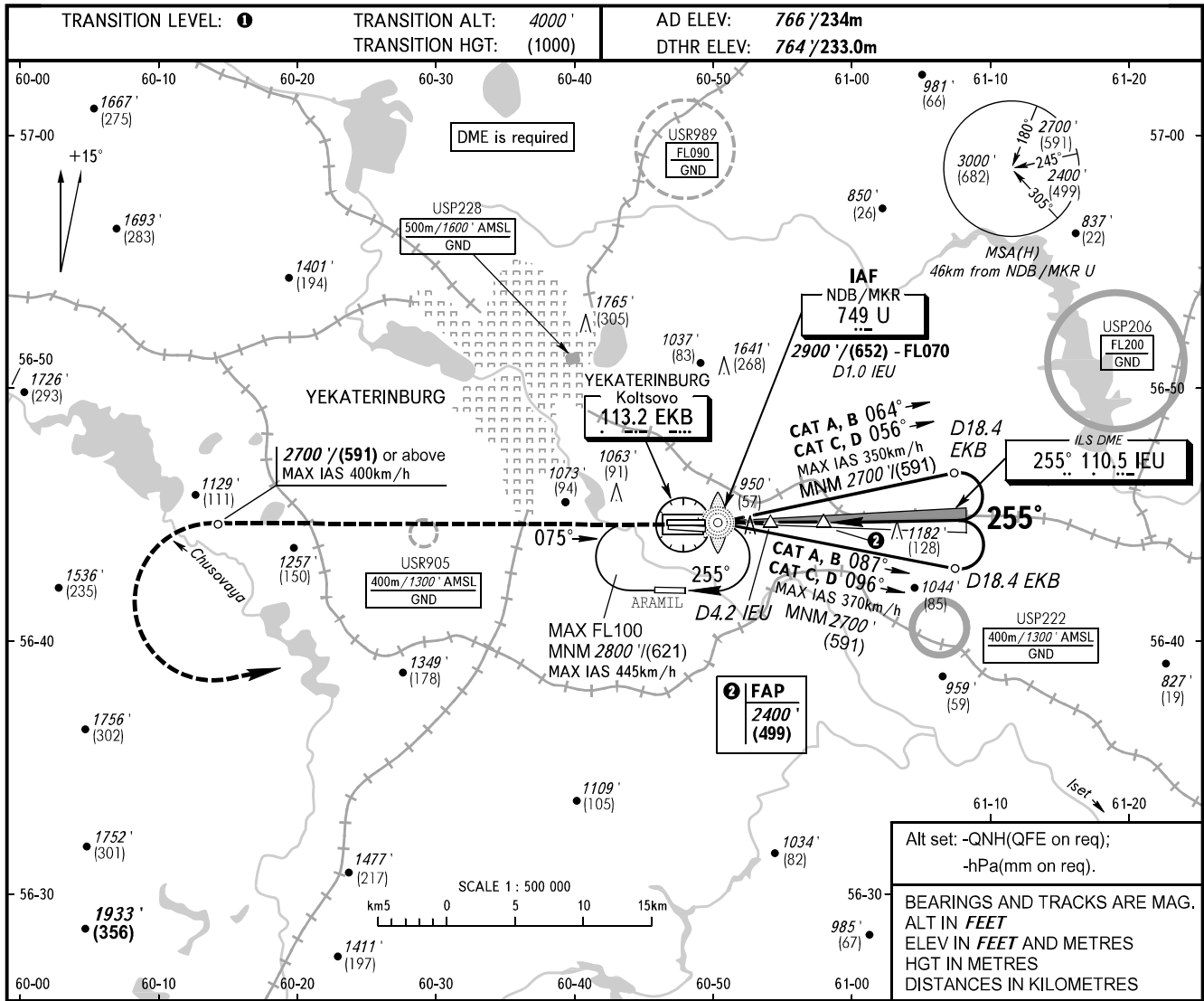


**INSTRUMENT
APPROACH
CHART - ICAO**

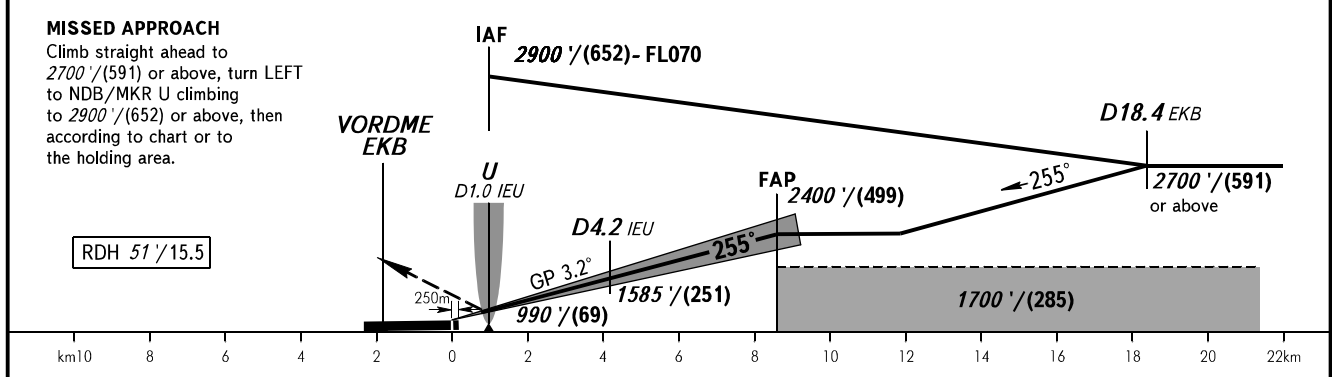
KOLTSOVO RADAR 118.700
KOLTSOVO START 124.300

YEKATERINBURG, RUSSIA
KOLTSOVO
ILS Z CAT I RWY 26R



Alt set: -QNH(QFE on req);
-hPa(mm on req).

BEARINGS AND TRACKS ARE MAG.
ALT IN FEET
ELEV IN FEET AND METRES
HGT IN METRES
DISTANCES IN KILOMETRES



OCA(H)	A	B	C	D	DL	① TRANSITION LEVEL:									
Straight-in Approach	CAT I	903' (139') (43)	911' (147') (45)	922' (158') (49)	935' (171') (53)	940' (176') (54)	- FL050 when QNH is 1013 hPa (760mm mercury column) or above; - FL060 when QNH is 977 hPa (733mm mercury column) or above, but less than 1013 hPa (760mm mercury column); - FL070 when QNH is less than 977 hPa (733mm mercury column). NOTE DME IEU reads zero at RWY 26R DTHR.								
		1250' (480') (149)	1360' (600') (182)	1740' (970') (298)	1760' (1000') (304)	1760' (1000') (304)									
GROUND SPEED	km/h						150	180	210	240	270	300	330	360	390
RATE OF DESCENT	m/s						2.4	2.9	3.4	3.9	4.4	4.8	5.3	5.8	6.3
	ft/min						472	571	669	768	866	945	1044	1142	1240