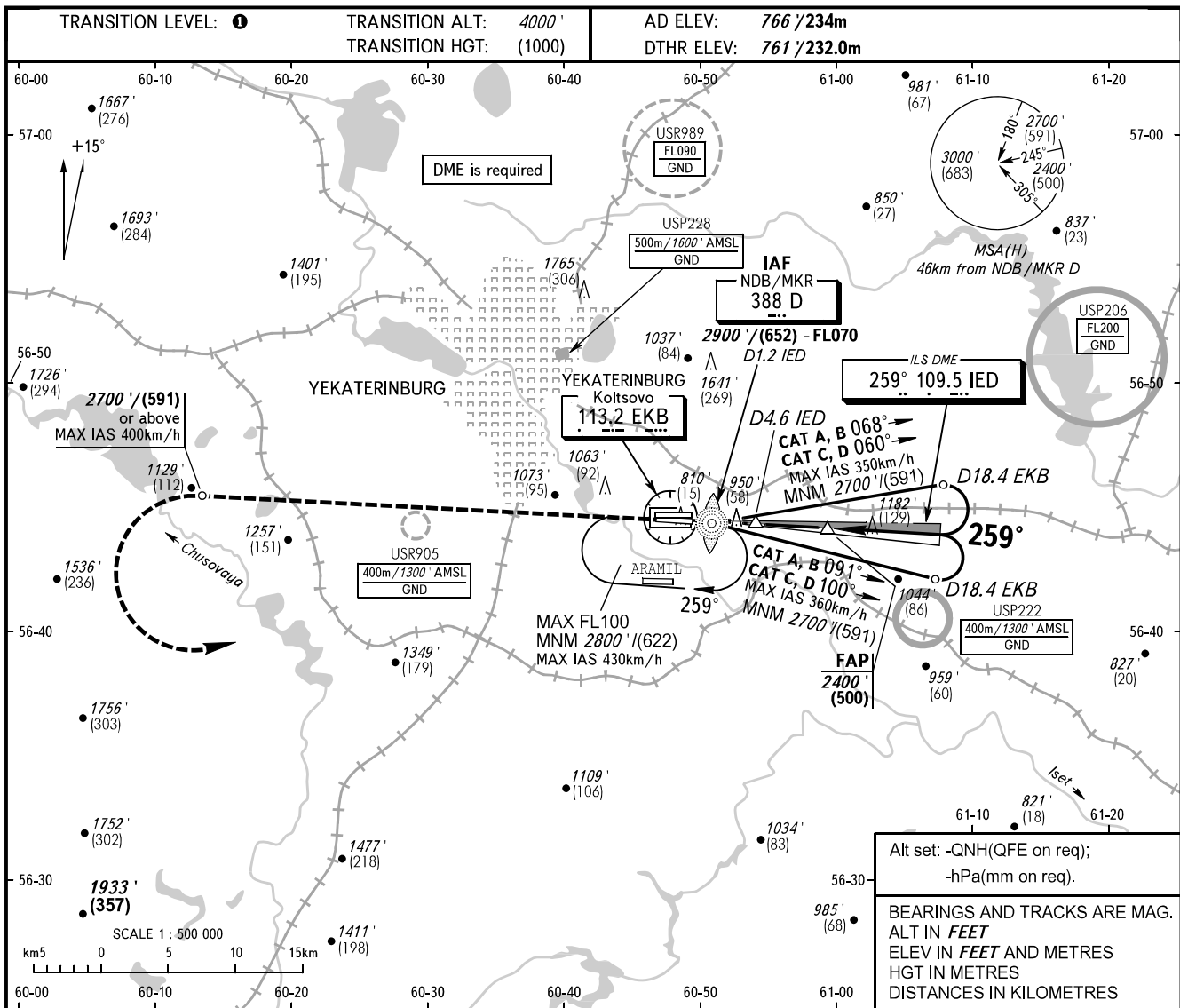


**INSTRUMENT
APPROACH
CHART - ICAO**

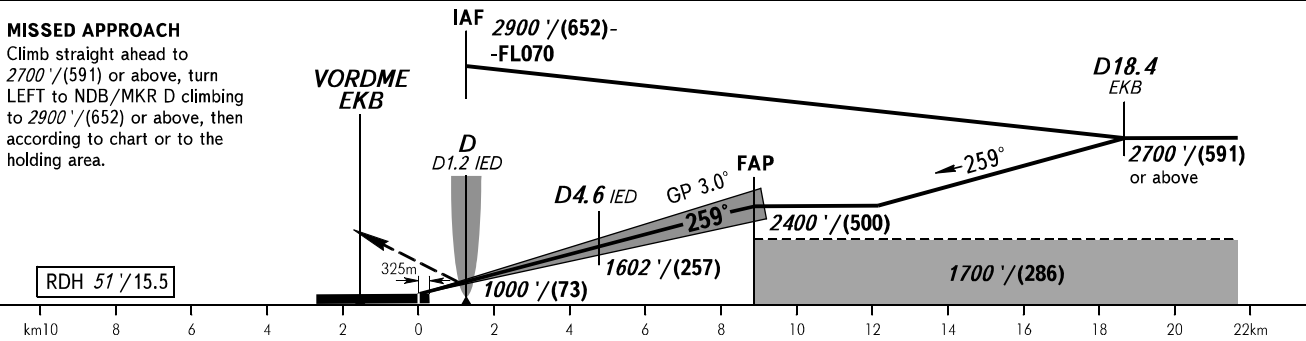
KOLTSOVO RADAR 118.700
KOLTSOVO START 124.300

YEKATERINBURG, RUSSIA
KOLTSOVO
ILS Z CAT I/II RWY 26L



MISSED APPROACH

Climb straight ahead to 2700'/(591) or above, turn LEFT to NDB/MKR D climbing to 2900'/(652) or above, then according to chart or to the holding area.



OCA(H)	A	B	C	D	DL	
Straight-in Approach	CAT I	903' (142') (44)	914' (153') (47)	926' (165') (51)	940' (179') (55)	943' (182') (56)
	CAT II	(49')	(60')	(73')	(87')	(93')
Circling	1250' (480') (149)	1360' (600') (183)	1740' (970') (299)	1760' (1000') (305)	1760' (1000') (305)	

① TRANSITION LEVEL:
 - FL050 when QNH is 1013 hPa (760mm mercury column) or above;
 - FL060 when QNH is 977 hPa (733mm mercury column) or above, but less than 1013 hPa (760mm mercury column);
 - FL070 when QNH is less than 977 hPa (733mm mercury column).
NOTE
 DME IED reads zero at RWY 26L DTHR.

GROUND SPEED	km/h	150	180	210	240	270	300	330	360	390
RATE OF DESCENT	m/s	2.2	2.6	3.1	3.5	3.9	4.4	4.8	5.2	5.7
		ft/min	433	512	610	689	768	866	945	1024