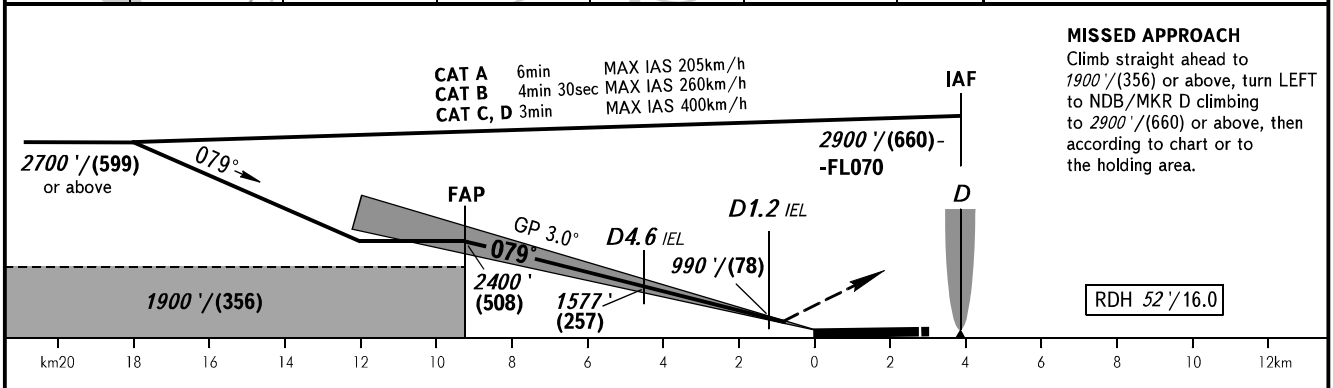
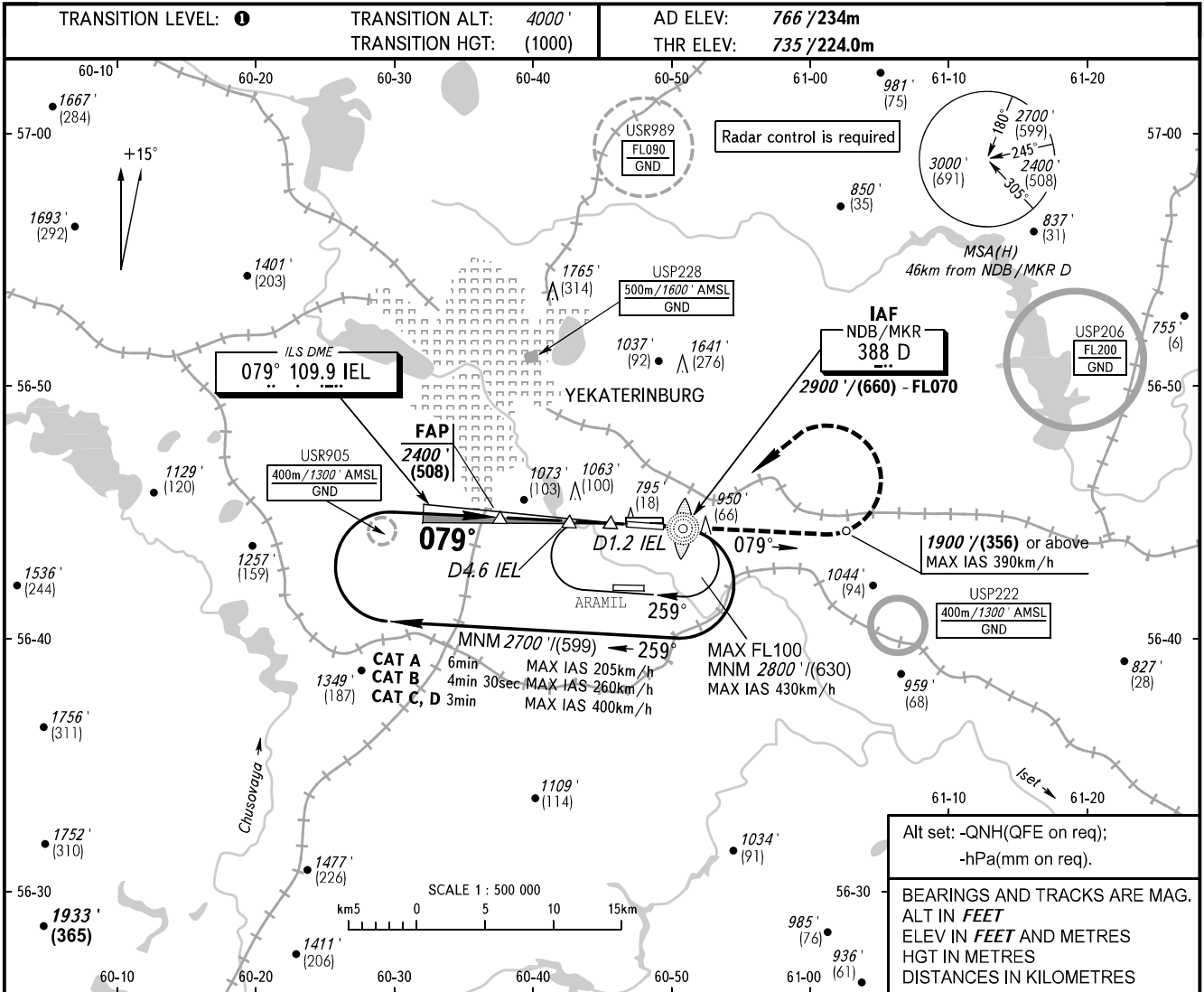


**INSTRUMENT  
APPROACH  
CHART - ICAO**

KOLTSOVO RADAR **118.700**  
KOLTSOVO START **124.300**

**YEKATERINBURG, RUSSIA**  
KOLTSOVO  
ILS Z CAT I RWY 08R



OCA(H)	A	B	C	D	DL	① TRANSITION LEVEL:						
Straight-in Approach	<b>CAT I</b>	883' (148') (46)	895' (160') (49)	909' (174') (53)	924' (189') (58)	927' (192') (59)	- FL050 when QNH is 1013 hPa (760mm mercury column) or above;					
							- FL060 when QNH is 977 hPa (733mm mercury column) or above, but less than 1013 hPa (760mm mercury column);					
Circling	1250' (480') (157)		1360' (600') (191)		1740' (970') (307)		1760' (1000') (313)		1760' (1000') (313)		- FL070 when QNH is less than 977 hPa (733mm mercury column).	
											<b>NOTE</b> DME IEL reads zero at RWY 08R THR.	
GROUND SPEED	km/h	150	180	210	240	270	300	330	360	390		
RATE OF DESCENT	m/s	2.2	2.6	3.1	3.5	3.9	4.4	4.8	5.2	5.7		
	ft/min	433	512	610	689	768	866	945	1024	1122		

CHANGE: Heading, HGT