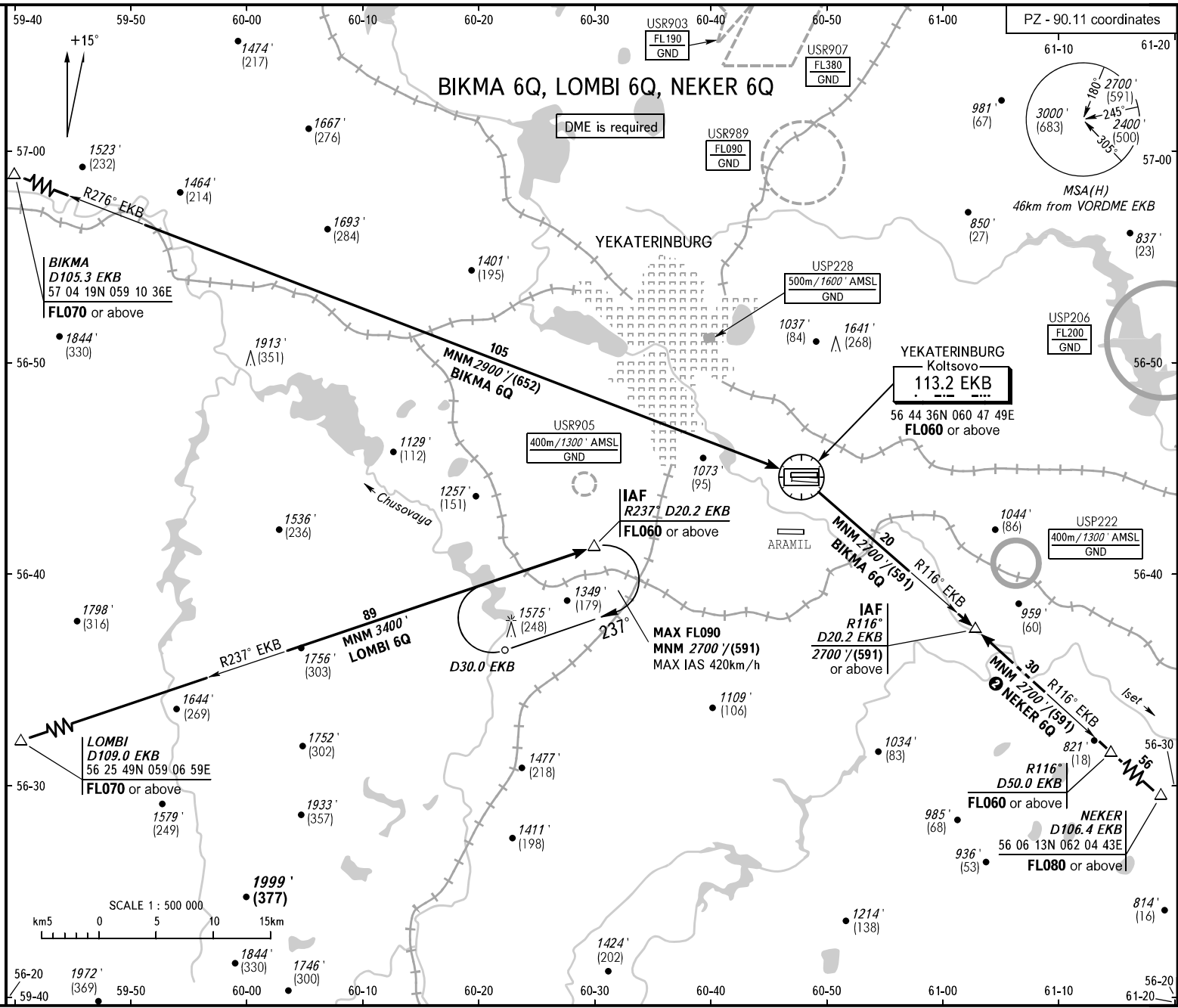


STANDARD ARRIVAL CHART
INSTRUMENT (STAR) - ICAO

TRANSITION
LEVEL: **1**

YEKATERINBURG, RUSSIA
KOLTISOVO
RWY 26R, 26L



KOLTISOVO APPROACH
KOLTISOVO RADAR
KOLTISOVO START
125.900
118.700
124.300

BEARINGS AND TRACKS ARE MAGNETIC
ALTITUDES AND ELEVATION IN FEET
HEIGHTS IN METRES
DISTANCES IN KILOWMETRES

Alt set: -QNH(QFE on req);
-hPa(m on req).

1 TRANSITION LEVEL:

- FL050 when QNH is 1013 hPa (760mm mercury column) or above;
- FL060 when QNH is 977 hPa (733mm mercury column) or above, but less than 1013 hPa (760mm mercury column);
- FL070 when QNH is less than 977 hPa (733mm mercury column).

- 2** NEKER 6Q by ATC only.

CHANGE: BIKMA 6Q, NEKER 6Q