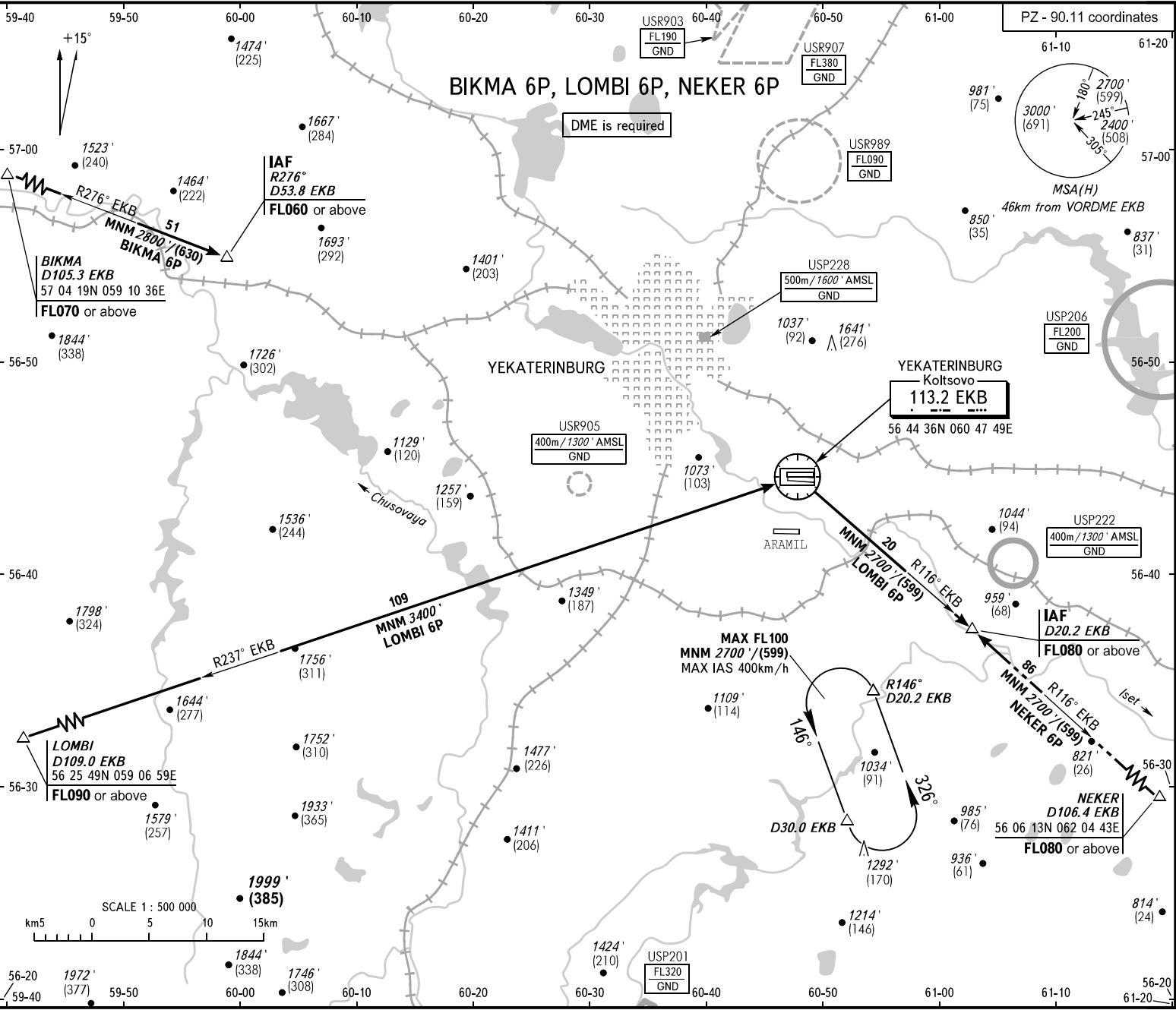


STANDARD ARRIVAL CHART
INSTRUMENT (STAR) - ICAO

TRANSITION LEVEL: 1

YEKATERINBURG, RUSSIA
KOLITSOVO
RWY 08L, 08R



CHANGE: BIKMA 6P

Federal Air Transport Agency

BEARINGS AND TRACKS ARE MAGNETIC
ALTITUDES AND ELEVATION IN FEET
HEIGHTS IN METRES
DISTANCES IN KILOMETRES

**Alt set: QNH(QFE on req);
hPa(mm on req).**

1 TRANSITION LEVEL:
- FL050 when QNH is 1013 hPa (760mm mercury column) or above;
- FL060 when QNH is 977 hPa (733mm mercury column) or above,
but less than 1013 hPa (760mm mercury column);
- FL070 when QNH is less than 977 hPa (733mm mercury column).

WARNING
NEKER 6P by ATC only.

KOLITSOVO APPROACH
KOLITSOVO RADAR
KOLITSOVO START

125.900
118.700
124.300

AIRCAM AMDT 11/23