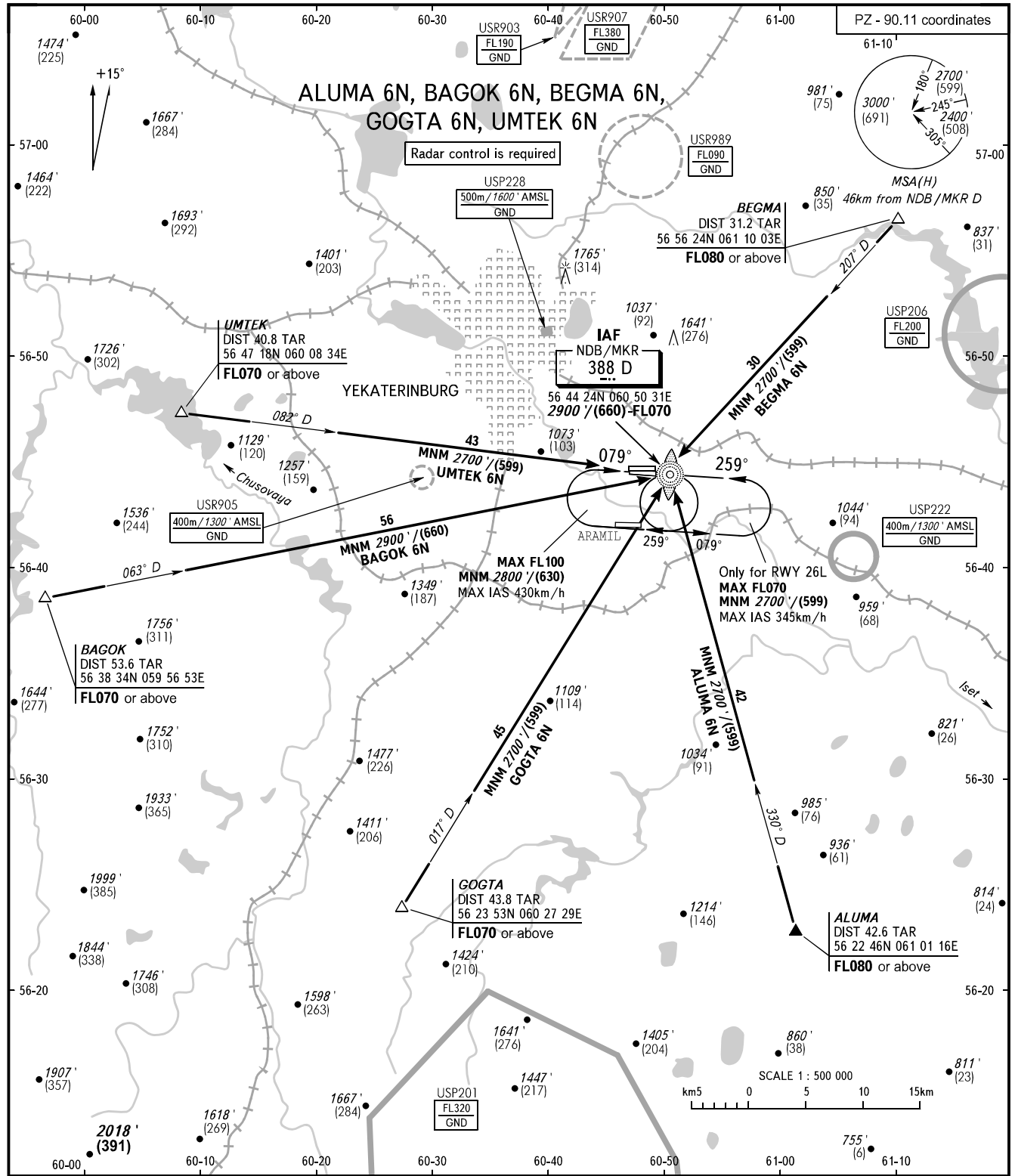


STANDARD ARRIVAL CHART
INSTRUMENT (STAR) - ICAO

YEKATERINBURG, RUSSIA
KOLTSOVO
RWY 08R/26L

TRANSITION
LEVEL : ①



KOLTSOVO APPROACH	125.900	① TRANSITION LEVEL: - FL050 when QNH is 1013 hPa (760mm mercury column) or above; - FL060 when QNH is 977 hPa (733mm mercury column) or above, but less than 1013 hPa (760mm mercury column); - FL070 when QNH is less than 977 hPa (733mm mercury column).
KOLTSOVO RADAR	118.700	
KOLTSOVO START	124.300	
BEARINGS AND TRACKS ARE MAGNETIC ALTITUDES AND ELEVATION IN FEET HEIGHTS IN METRES DISTANCES IN KILOMETRES	Alt set: -QNH(QFE on req); -hPa(mm on req).	