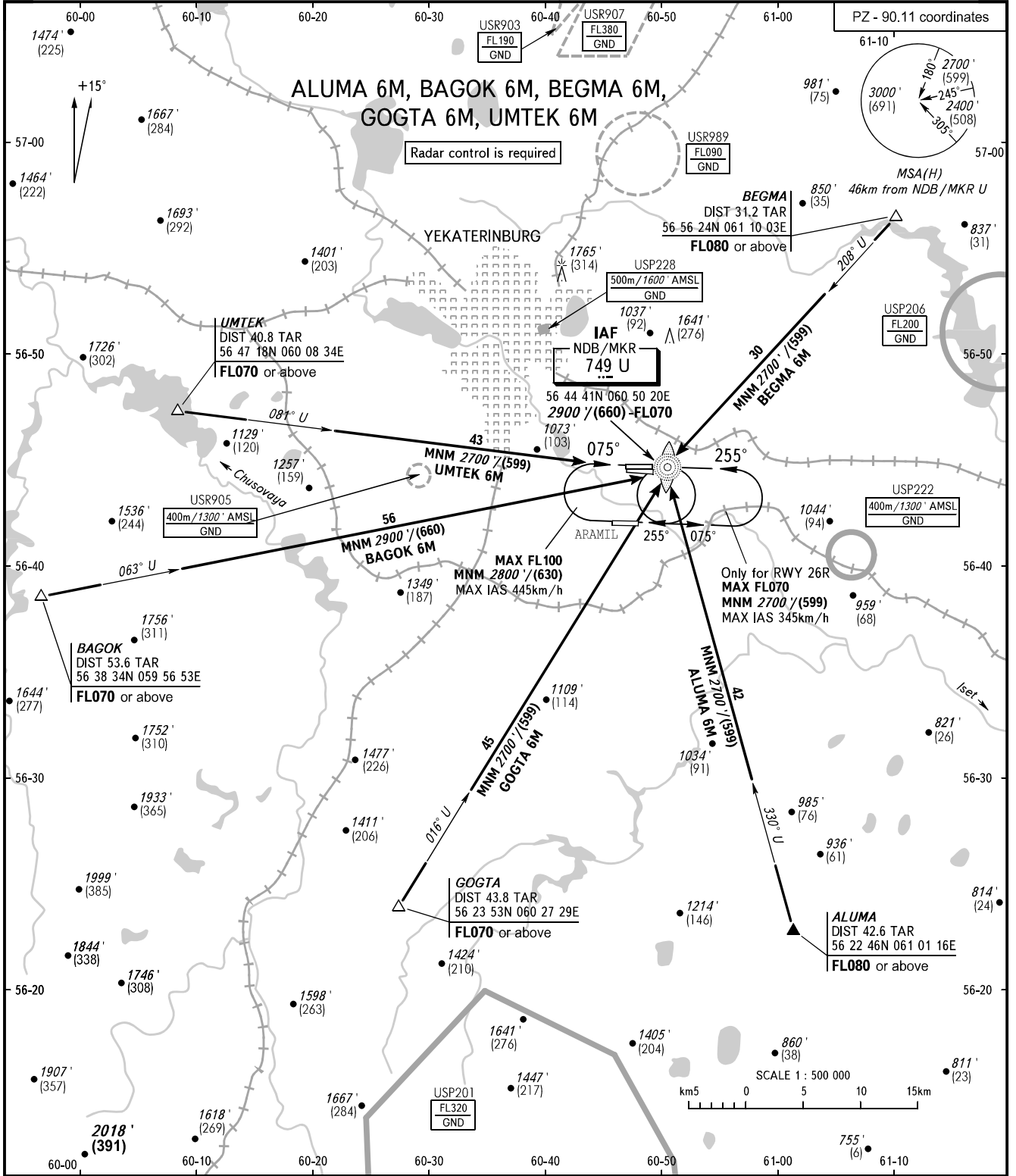


STANDARD ARRIVAL CHART  
INSTRUMENT (STAR) - ICAO

YEKATERINBURG, RUSSIA  
KOLTSOVO  
RWY 08L/26R

TRANSITION  
LEVEL : **1**



KOLTSOVO APPROACH	125.900
KOLTSOVO RADAR	118.700
KOLTSOVO START	124.300

- 1** TRANSITION LEVEL:
- FL050 when QNH is 1013 hPa (760mm mercury column) or above;
  - FL060 when QNH is 977 hPa (733mm mercury column) or above, but less than 1013 hPa (760mm mercury column);
  - FL070 when QNH is less than 977 hPa (733mm mercury column).

BEARINGS AND TRACKS ARE MAGNETIC ALTITUDES AND ELEVATION IN FEET HEIGHTS IN METRES DISTANCES IN KILOMETRES	Alt set: -QNH(QFE on req); -hPa(mm on req).
---	--

CHANGE: Heading, HGT