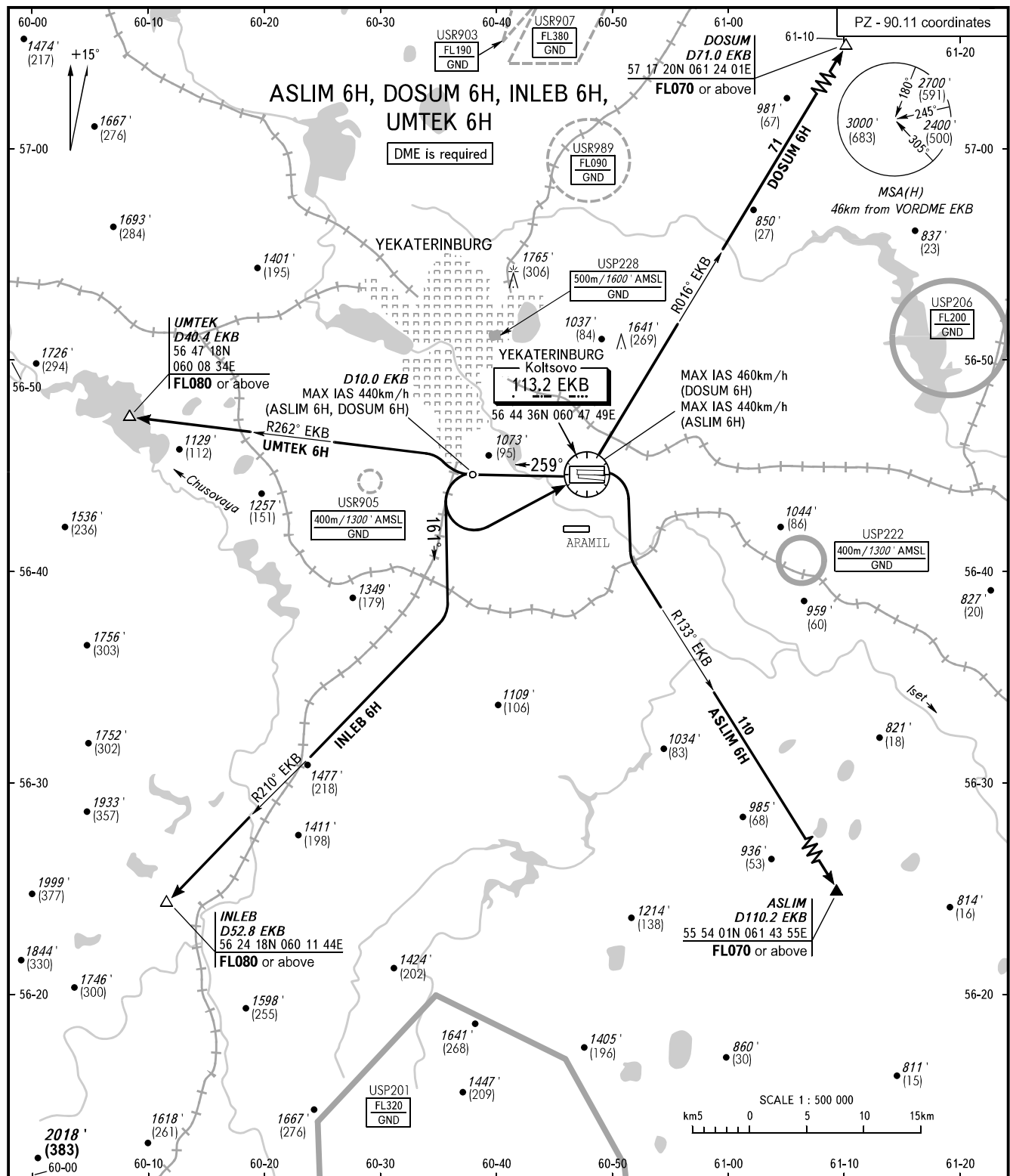


STANDARD DEPARTURE CHART
INSTRUMENT (SID) - ICAO

YEKATERINBURG, RUSSIA
KOLTSOVO
RWY 26L

TRANSITION ALT: 4000'
TRANSITION HGT: (1000)



KOLTSOVO START	124.300
KOLTSOVO RADAR	118.700
KOLTSOVO APPROACH	125.900

WARNING
The minimum climb gradients are as follows (required due to the airspace structure):
- 3.8% up to FL080 for SID INLEB 6H;
- 5.7% up to FL080 for SID UMTEK 6H;
- 7.0% for SID ASLIM 6H, if unable to maintain climb gradient, by ATC unit instruction.

BEARINGS AND TRACKS ARE MAGNETIC ALTITUDES AND ELEVATION IN FEET HEIGHTS IN METRES DISTANCES IN KILOMETRES	Alt set: -QNH(QFE on req); -hPa(mm on req).
---	--

CHANGE: Heading, HGT