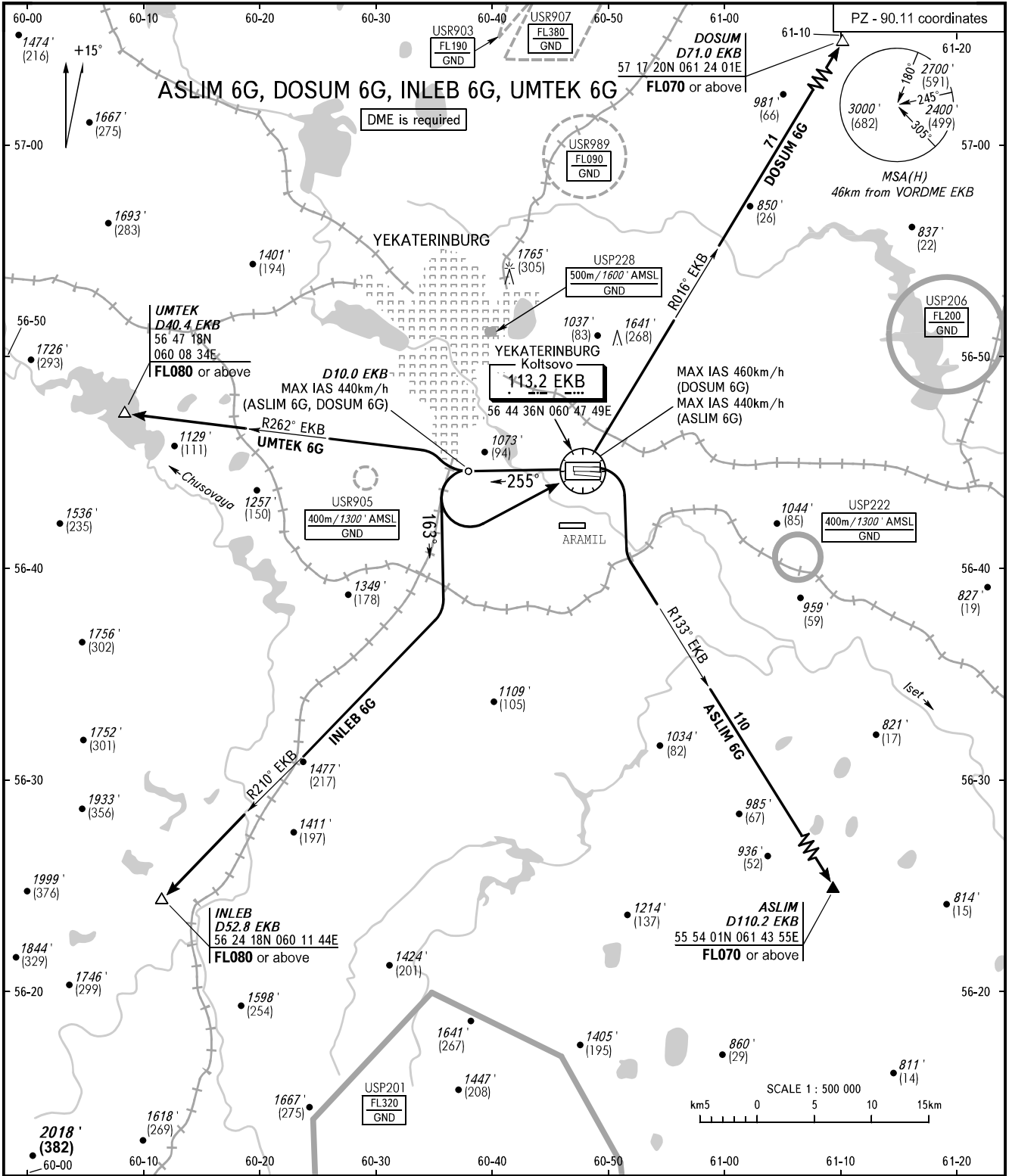


STANDARD DEPARTURE CHART
INSTRUMENT (SID) - ICAO

YEKATERINBURG, RUSSIA
KOLTSOVO
RWY 26R

TRANSITION ALT: **4000'**
TRANSITION HGT: **(1000)**



KOLTSOVO START **124.300**
KOLTSOVO RADAR **118.700**
KOLTSOVO APPROACH **125.900**

WARNING
The minimum climb gradients are as follows (required due to the airspace structure):
- 3.8% up to FL080 for SID INLEB 6G;
- 5.7% up to FL080 for SID UMTEK 6G;
- SID ASLIM 6G 7.0%, if unable to maintain climb gradient, by ATC unit instruction.

BEARINGS AND TRACKS ARE MAGNETIC
ALTITUDES AND ELEVATION IN **FEET**
HEIGHTS IN METRES
DISTANCES IN KILOMETRES

Alt set: -QNH(QFE on req);
-hPa(mm on req).

CHANGE: Heading, HGT