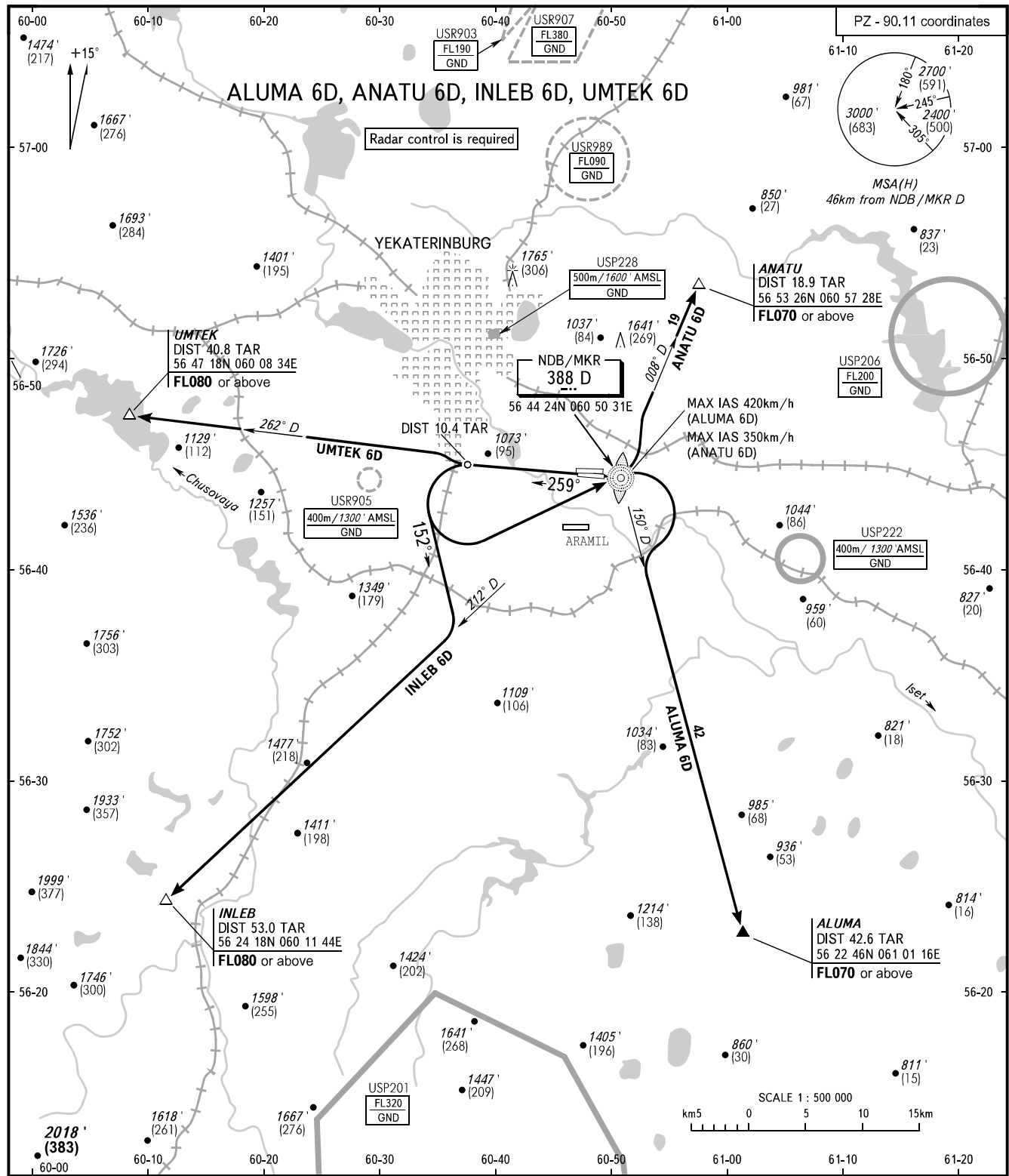


STANDARD DEPARTURE CHART
INSTRUMENT (SID) - ICAO

YEKATERINBURG, RUSSIA
KOLTSOVO
RWY 26L

TRANSITION ALT: 4000'
TRANSITION HGT: (1000)



KOLTSOVO START 124.300
KOLTSOVO RADAR 118.700
KOLTSOVO APPROACH 125.900

- WARNING:**
- The minimum climb gradients are as follows (required due to the airspace structure):
 - 3.8% up to FL070 for SID ANATU 6D;
 - 3.7% up to FL080 for SID INLEB 6D;
 - 5.7% up to FL080 for SID UMTEK 6D.
 - Initial turn by ATC.

BEARINGS AND TRACKS ARE MAGNETIC ALTITUDES AND ELEVATION IN FEET HEIGHTS IN METRES DISTANCES IN KILOMETRES	Alt set: -QNH(QFE on req); -hPa(mm on req).
---	--

CHANGE: Heading, HGT