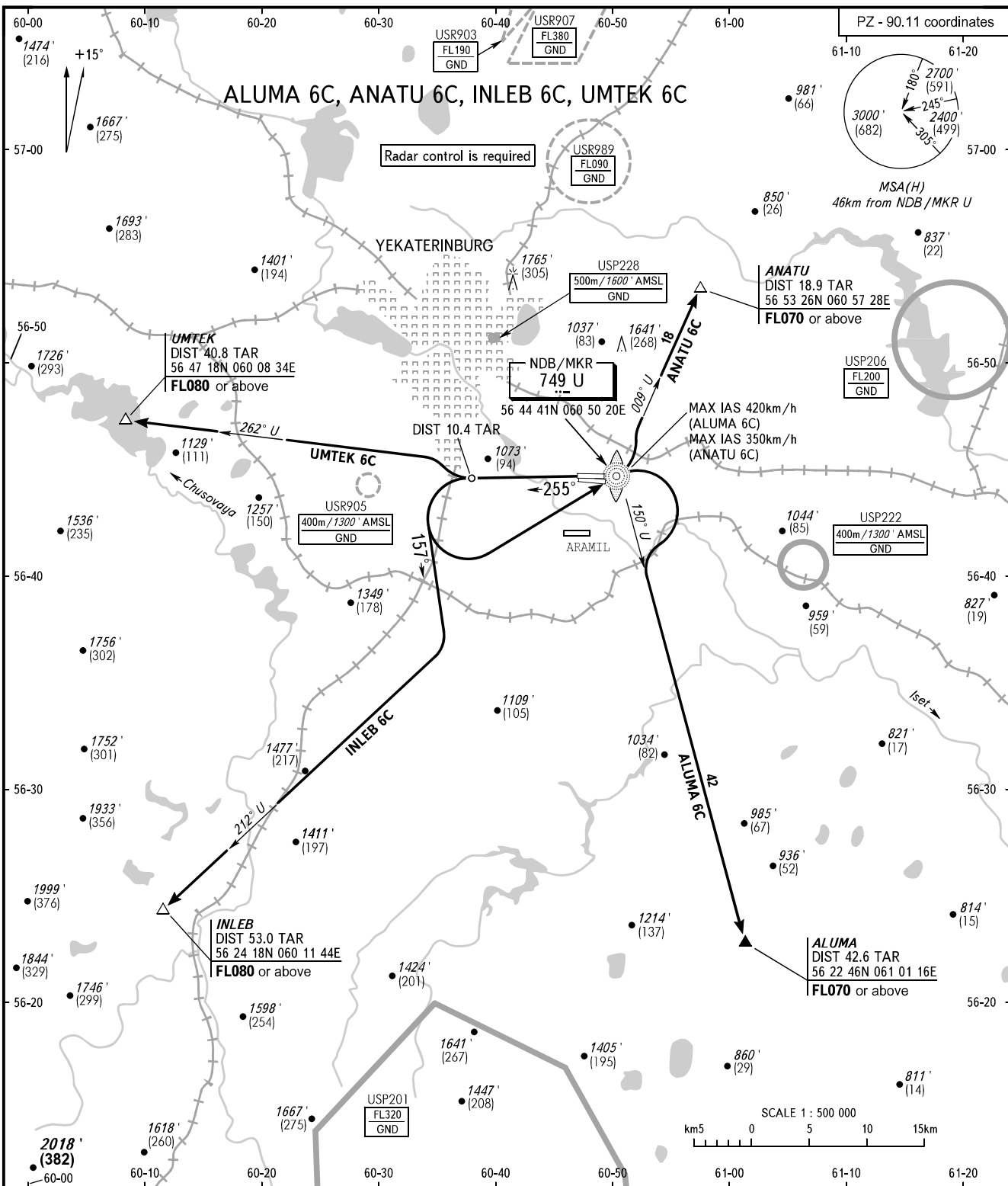


STANDARD DEPARTURE CHART
INSTRUMENT (SID) - ICAO

YEKATERINBURG, RUSSIA
KOLTSOVO
RWY 26R

TRANSITION ALT: **4000'**
TRANSITION HGT: **(1000)**



KOLTSOVO START **124.300**
KOLTSOVO RADAR **118.700**
KOLTSOVO APPROACH **125.900**

WARNING:
1. The minimum climb gradients are as follows (required due to the airspace structure):
- 3.7% up to FL070 for SID ANATU 6C;
- 3.8% up to FL080 for SID INLEB 6C;
- 5.7% up to FL080 for SID UMTEK 6C.
2. Initial turn by ATC.

BEARINGS AND TRACKS ARE MAGNETIC
ALTITUDES AND ELEVATION IN **FEET**
HEIGHTS IN METRES
DISTANCES IN KILOMETRES

Alt set: -QN(H)(QFE on req);
-hPa(mm on req).

CHANGE: Heading, HGT