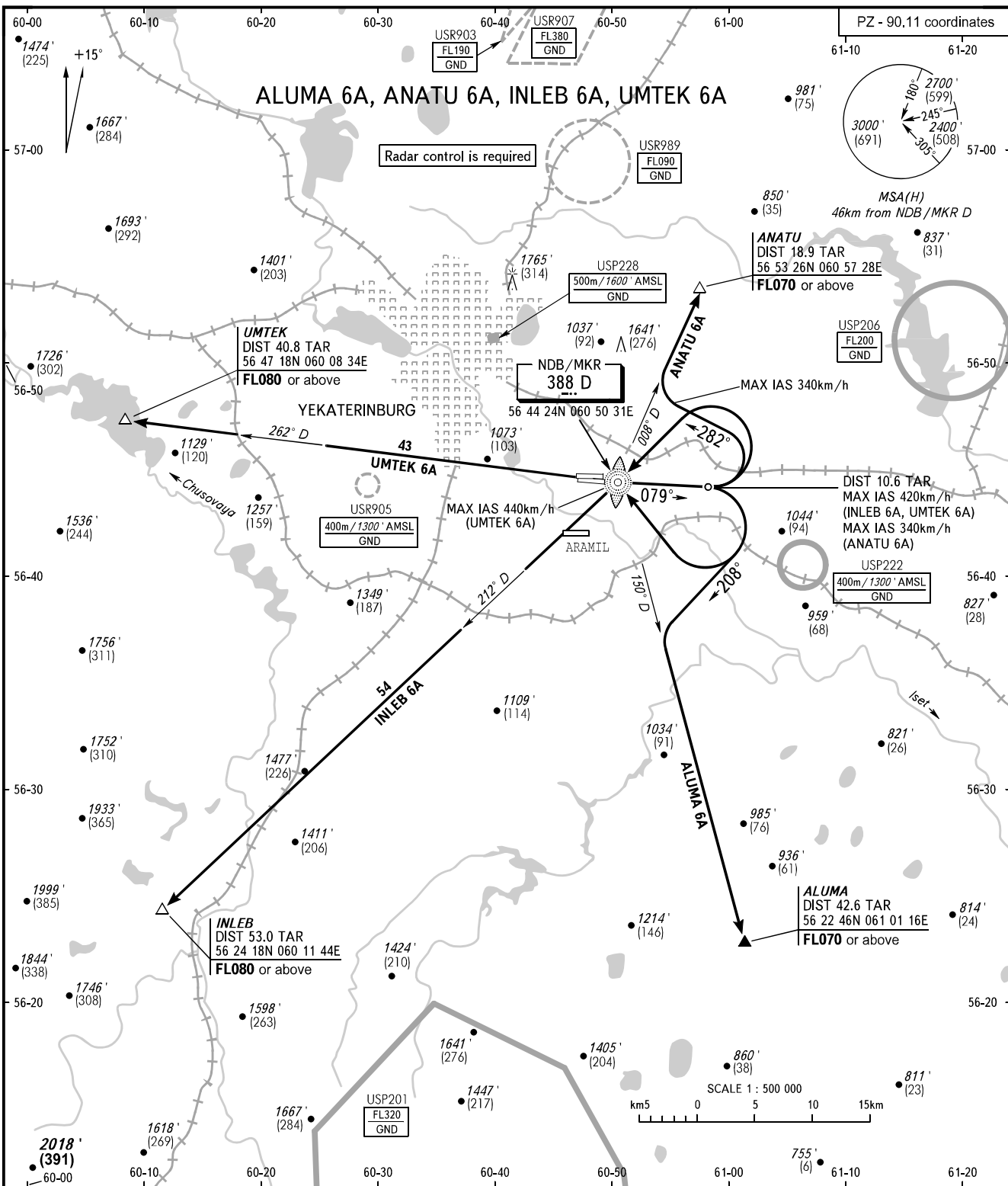


STANDARD DEPARTURE CHART
INSTRUMENT (SID) - ICAO

YEKATERINBURG, RUSSIA
KOLTSOVO
RWY 08R

TRANSITION ALT: **4000'**
TRANSITION HGT: **(1000)**



KOLTSOVO START **124.300**
KOLTSOVO RADAR **118.700**
KOLTSOVO APPROACH **125.900**

WARNING:
1. The minimum climb gradients are as follows (required due to the airspace structure):
- 3.6% up to FL070 for SID ALUMA 6A;
- 5.9% up to FL070 for SID ANATU 6A.
2. Initial turn by ATC.

BEARINGS AND TRACKS ARE MAGNETIC
ALTITUDES AND ELEVATION IN *FEET*
HEIGHTS IN METRES
DISTANCES IN KILOMETRES

Alt set: -QNH(QFE on req);
-hPa(mm on req).