

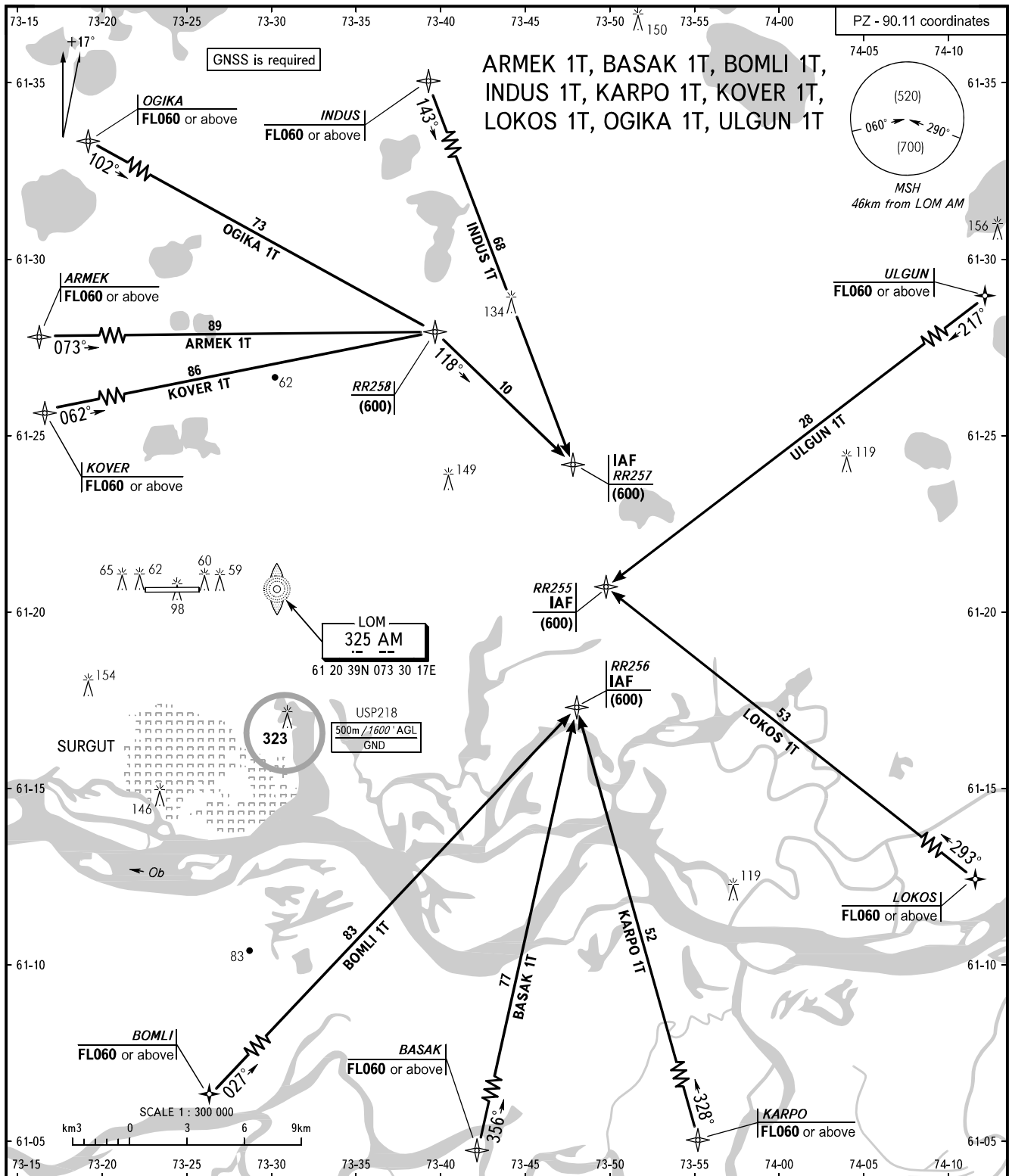
STANDARD ARRIVAL CHART
INSTRUMENT (STAR) - ICAO

TRANSITION
LEVEL: **1**

SURGUT, RUSSIA

SURGUT

RNAV RWY 25



APPROACH	129.300	1 TRANSITION LEVEL: - FL040 when QFE is 742mm mercury column or above; - FL050 when QFE is less than 742mm mercury column.
KRUG	120.300	
TOWER	120.800	

BEARINGS AND TRACKS ARE MAGNETIC
 ALTITUDES, HEIGHTS AND ELEVATIONS IN METRES
 DISTANCES IN KILOMETRES

Alt set: -QFE(QNH on req);
 -mm(hPa on req).

CHANGE: New chart