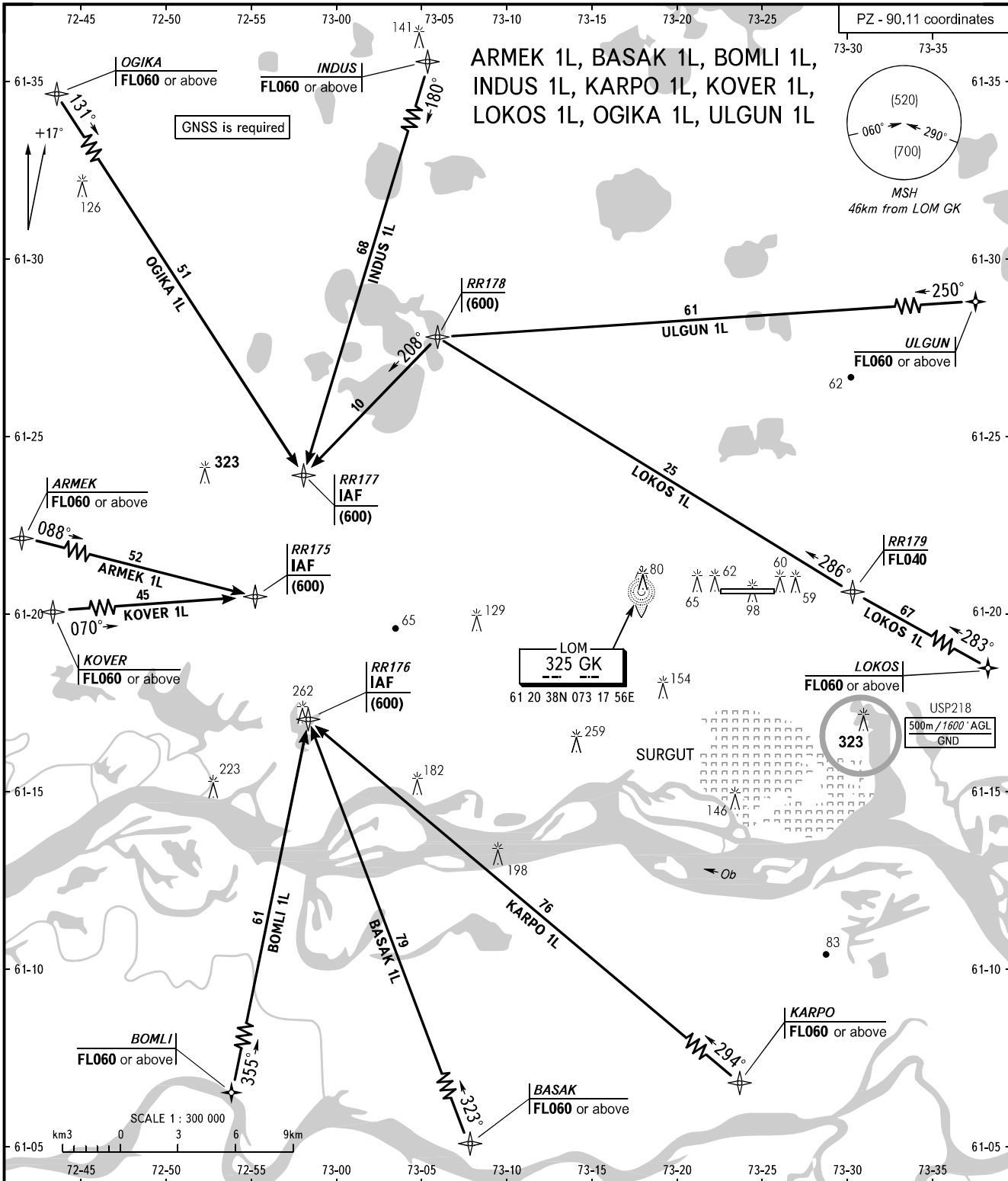


STANDARD ARRIVAL CHART  
INSTRUMENT (STAR) - ICAO

TRANSITION  
LEVEL: **1**

SURGUT, RUSSIA  
SURGUT  
RNAV RWY 07



APPROACH **129.300**  
KRUG **120.300**  
TOWER **120.800**

**1** TRANSITION LEVEL:  
- FL040 when QFE is 742mm mercury column or above;  
- FL050 when QFE is less than 742mm mercury column.

BEARINGS AND TRACKS ARE MAGNETIC  
ALTITUDES, HEIGHTS AND ELEVATIONS IN METRES  
DISTANCES IN KILOMETRES

Alt set: -QFE(QNH on req);  
-mm(hPa on req).