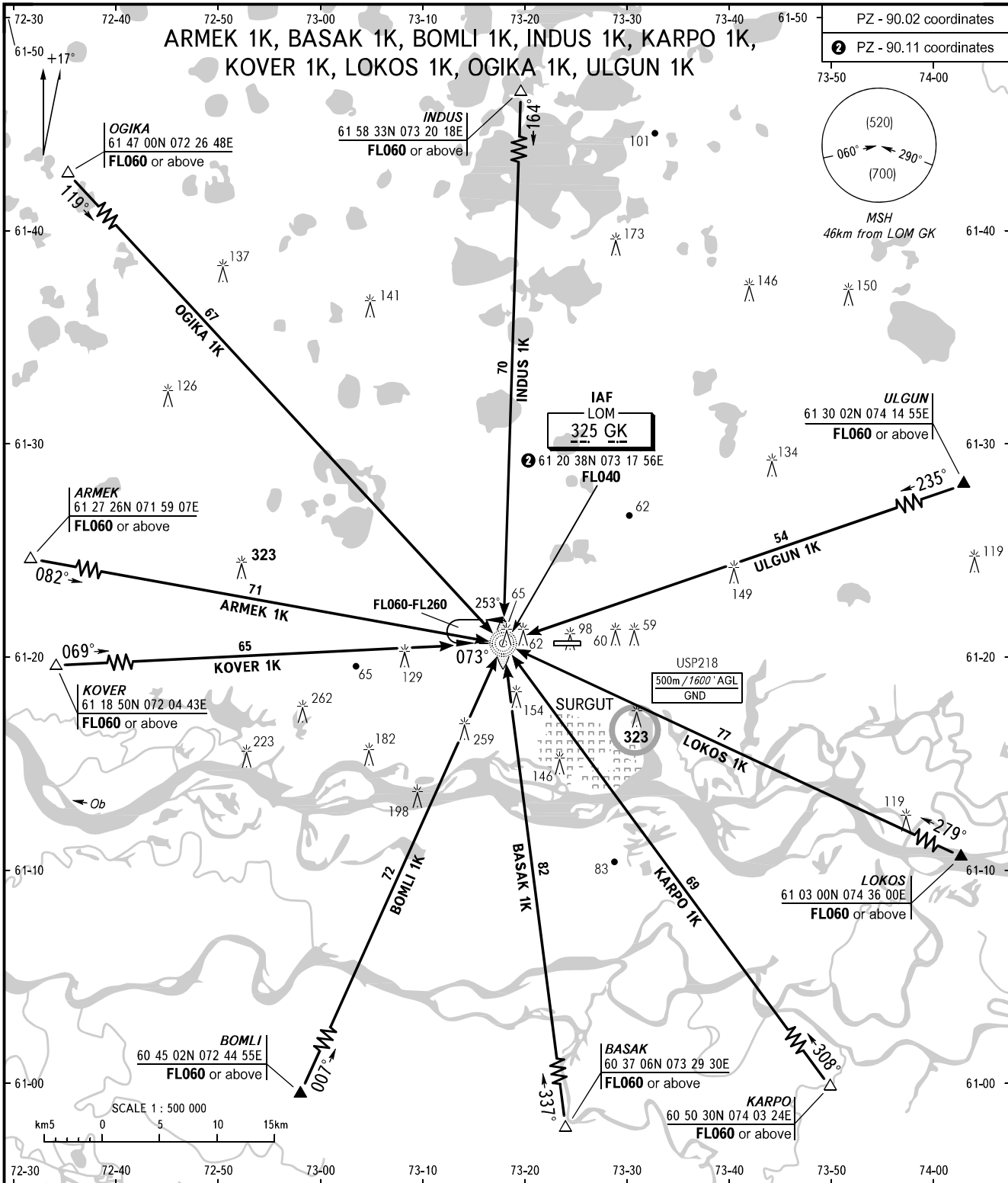


STANDARD ARRIVAL CHART
INSTRUMENT (STAR) - ICAO

SURGUT, RUSSIA
SURGUT
RWY 07

TRANSITION
LEVEL: ①



APPROACH **129.300**
KRUG **120.300**
TOWER **120.800**

① TRANSITION LEVEL:
- FL040 when QFE is 742mm mercury column or above;
- FL050 when QFE is less than 742mm mercury column.

BEARINGS AND TRACKS ARE MAGNETIC
ALTITUDES, HEIGHTS AND ELEVATIONS IN METRES
DISTANCES IN KILOMETRES

Alt set: -QFE(QNH on req);
-mm(hPa on req).

CHANGE: New chart